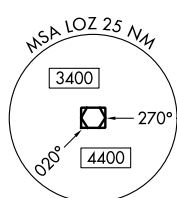


LOC/DME I-BYL 108.3 Chan 20	APP CRS 200°	Rwy Idg 5498 TDZE 1178 Apt Elev 1178
---	------------------------	---

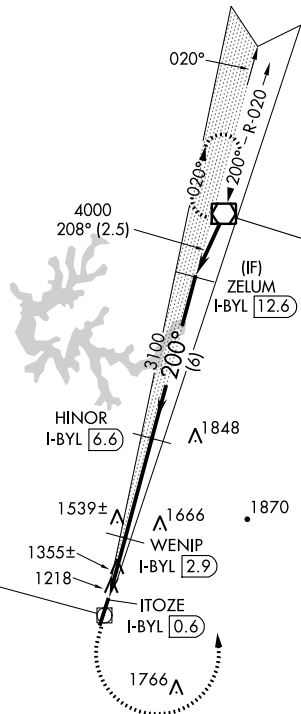
LOC/DME RWY 20

WILLIAMSBURG-WHITLEY COUNTY (BYL)

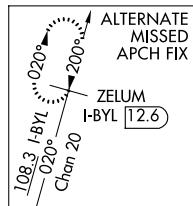
<p>V VDP NA with London altimeter setting. When local altimeter setting not received, use London altimeter setting and increase all MDA 60 feet, increase Cat D Circling visibility 1/8 mile.</p> <p>A NA</p> <p>21°C/-6°F</p>	<p>MISSED APPROACH: Climb to 1800 then climbing left turn to 4000 direct LOZ VOR/DME and hold.</p>	
<p>AWOS-3 119.575</p>	<p>INDIANAPOLIS CENTER 124.625 371.925</p>	<p>UNICOM 122.7 (CTAF)</p>



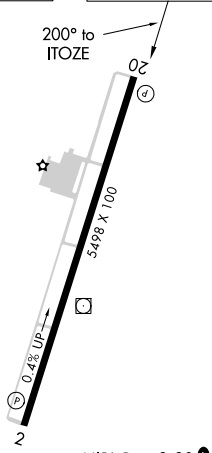
Procedure NA for arrivals on LOZ VOR/DME airway radials 144 CW 245.



LOCALIZER 108.3
I-BYL [2.8]
Chan 20
LOC offset 2.88°



ELEV 1178	TDZE 1178
-----------	-----------



MIRL Rwy 2-20
REIL Rwy 2 and 20

1800	4000	LOZ	VGSI and descent angles not coincident (VGSI Angle 3.17/TCH 30).	
ZELUM I-BYL [12.6]		HINOR I-BYL [6.6]	WENIP I-BYL [2.9]	
ITOZE I-BYL [0.6]		I-BYL [1.8]	3100	
1940		2.95° TCH 45		4000
1.2 NM		1.1 NM	3.7 NM	6 NM
CATEGORY	A	B	C	D
S-20	1620-1	442 (500-1)	1620-1 3/8	442 (500-1 3/8)
CIRCLING	1760-1	582 (600-1)	1760-1 1/2	2080-3 902 (1000-3)

SE-1, 12 OCT 2017 to 09 NOV 2017

SE-1, 12 OCT 2017 to 09 NOV 2017

WAAS CH 53312 W02A	APP CRS 023°	Rwy Idg TDZE 1168 Apt Elev 1178	5498
--	------------------------	---	-------------

RNAV (GPS) RWY 2

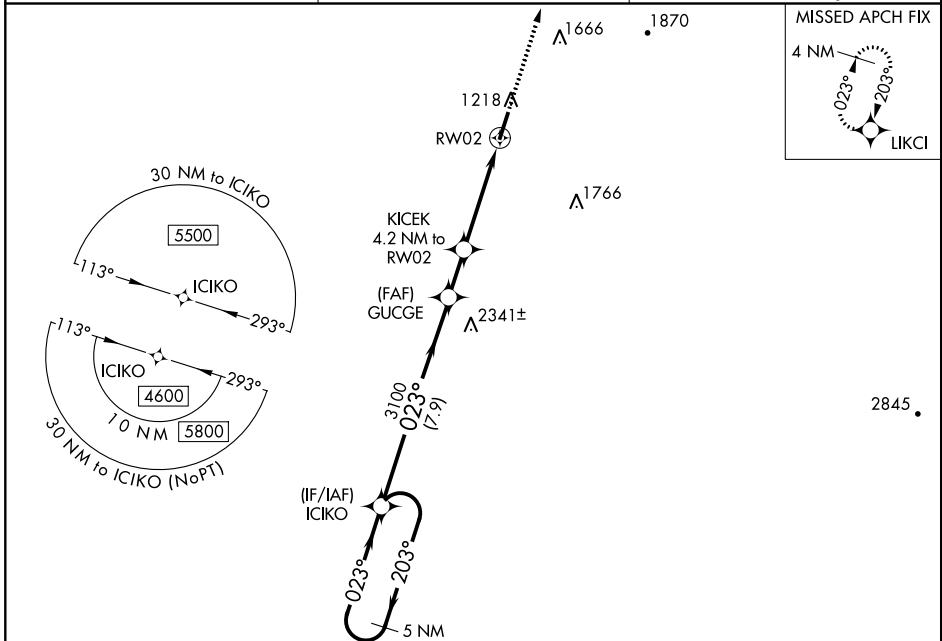
WILLIAMSBURG-WHITLEY COUNTY (BYL)

NA When local altimeter setting not received, use London altimeter setting and increase DA 48 feet, MDA 60 feet and LPV all Cats visibility 1/8 mile. DME/DME RNP-0.3 NA. Visibility reduction by helicopters NA. VDP NA with London altimeter setting.

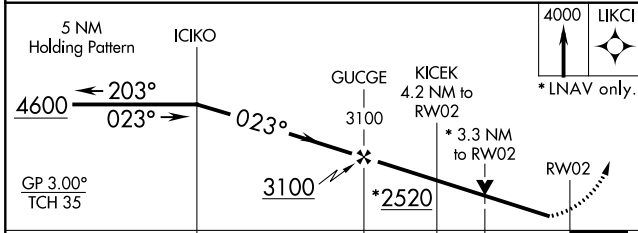
MISSED APPROACH: Climb to 4000 direct LKCI and hold.

-21°C -6°F

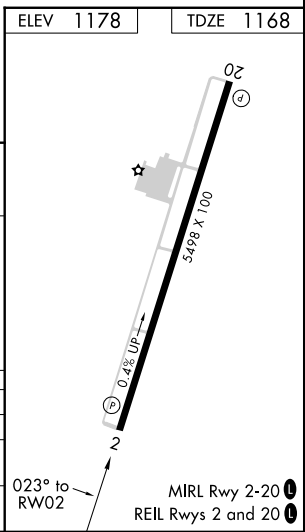
AWOS-3 119.575	INDIANAPOLIS CENTER 124.625 371.925	UNICOM 122.7 (CTAF) 0
--------------------------	---	---------------------------------



ELEV 1178	TDZE 1168
-----------	-----------



CATEGORY	A	B	C	D
LPV DA	1418 7/8		250 (300-7/8)	
LNAV MDA	2300-1 1/4 1132 (1200-1 1/4)	2300-1 1/2 1132 (1200-1 1/2)	2300-3	1132 (1200-3)
CIRCLING	2300-1 1/4 1122 (1200-1 1/4)	2300-1 1/2 1122 (1200-1 1/2)	2300-3	1122 (1200-3)



SE-1, 12 OCT 2017 to 09 NOV 2017

SE-1, 12 OCT 2017 to 09 NOV 2017

WAAS CH 70403 W20A	APP CRS 203°	Rwy Idg TDZE Apt Elev	5498 1178 1178
--	------------------------	-----------------------------	---

RNAV (GPS) RWY 20

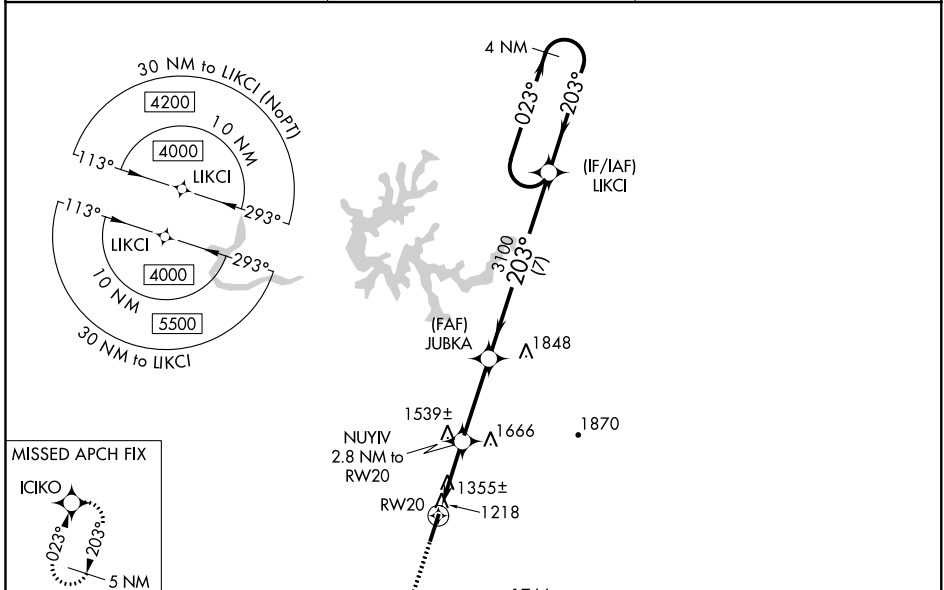
WILLIAMSBURG-WHITLEY COUNTY (BYL)

NA Baro-VNAV NA when using London altimeter setting. For uncompensated Baro-VNAV systems, LNAV/VNAV NA below -17°C (2°F) or above 36°C (96°F). When local altimeter setting not received, use London altimeter setting and increase all DA 48 feet, all MDA 60 feet, LPV all Cats visibility 1/8 mile, LNAV/VNAV all Cats visibility 1/4 mile, LNAV Cats C and D visibility 1/4 mile and Circling Cat C visibility 1/4 mile.

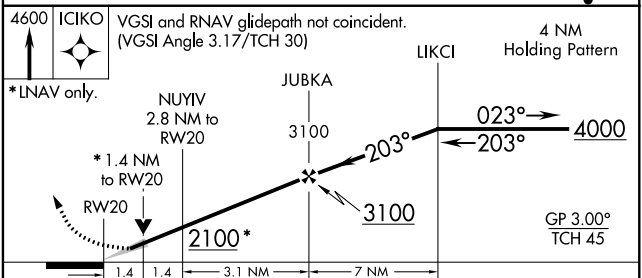
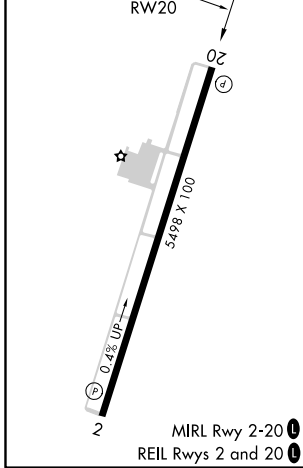
-21°C/-6°F DME/DME RNP-0.3 NA. VDP NA with London altimeter setting.

MISSED APPROACH: Climb to 4600 direct ICIKO and hold.

AWOS-3 119.575	INDIANAPOLIS CENTER 124.625 371.925	UNICOM 122.7 (CTAF)
---------------------------------	--	--------------------------------------



ELEV 1178	TDZE 1178
-----------	-----------



CATEGORY	A	B	C	D
LPV DA		1554-1 1/4	376 (400-1 1/4)	
LNAV/VNAV DA		1670-1 1/8	492 (500-1 1/8)	
LNAV MDA	1680-1	502 (600-1)	1680-1 3/8	502 (600-1 3/8)
CIRCLING	1760-1	582 (600-1)	1760-1 1/2	2080-3 902 (1000-3)

SE-1, 12 OCT 2017 to 09 NOV 2017

SE-1, 12 OCT 2017 to 09 NOV 2017

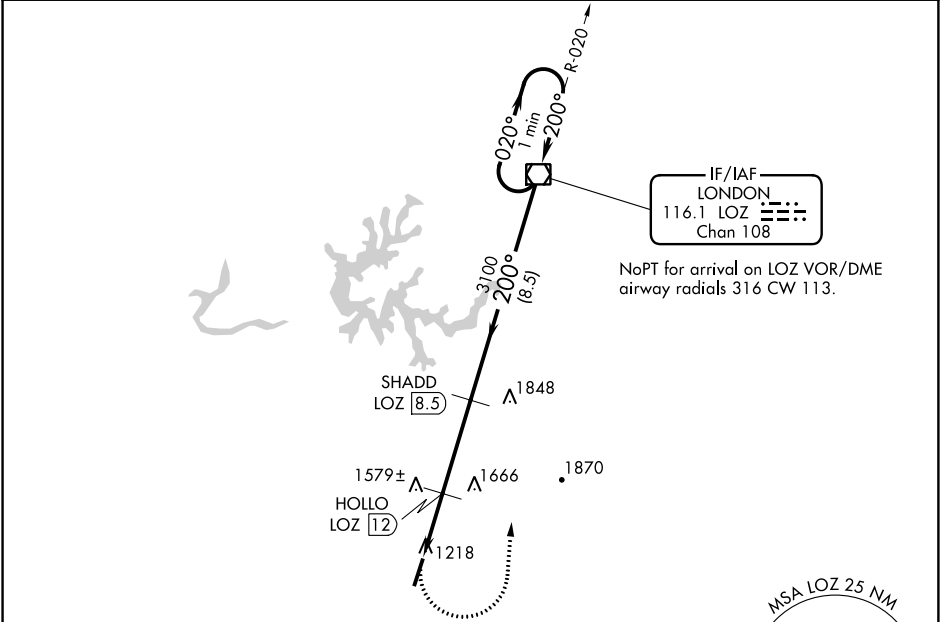
VOR/DME LOZ	APP CRS	Rwy Idg	5498
116.1	200°	TDZE	1178
Chan 108		Apt Elev	1178

VOR/DME RWY 20

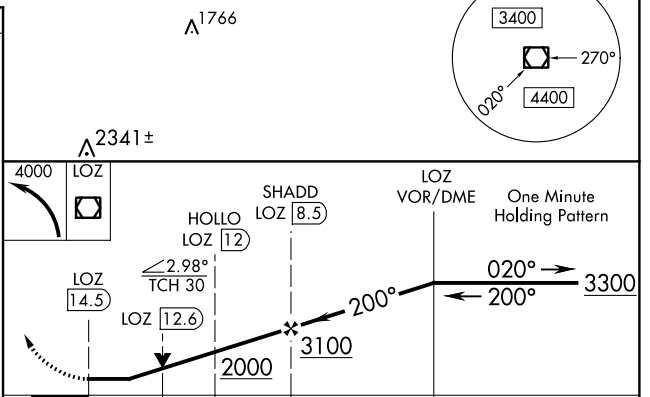
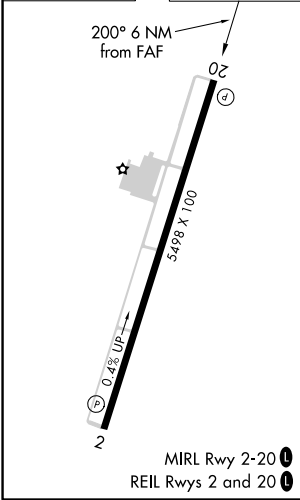
WILLIAMSBURG-WHITLEY COUNTY (BYL)

<p>⚠ NA</p> <p>☁ -21°C/-6°F</p>	<p>When local altimeter setting not received, use London altimeter setting increase all MDA 60 feet and increase S-20 Cats C and D and Circling Cat C visibility 1/8 mile. VDP NA with London altimeter setting.</p>	<p>MISSED APPROACH: Climbing left turn to 4000 direct LOZ VOR/DME and hold.</p>

AWOS-3 119.575	INDIANAPOLIS CENTER 124.625 371.925	UNICOM 122.7 (CTAF)
--------------------------	---	-------------------------------



ELEV 1178	TDZE 1178
-----------	-----------



CATEGORY	A	B	C	D
S-20	1840-1	662 (700-1)	1840-1 7/8	662 (700-1 7/8)
CIRCLING	1840-1	662 (700-1)	1840-1 7/8 662 (700-1 7/8)	2080-3 902 (1000-3)

SE-1, 12 OCT 2017 to 09 NOV 2017

SE-1, 12 OCT 2017 to 09 NOV 2017