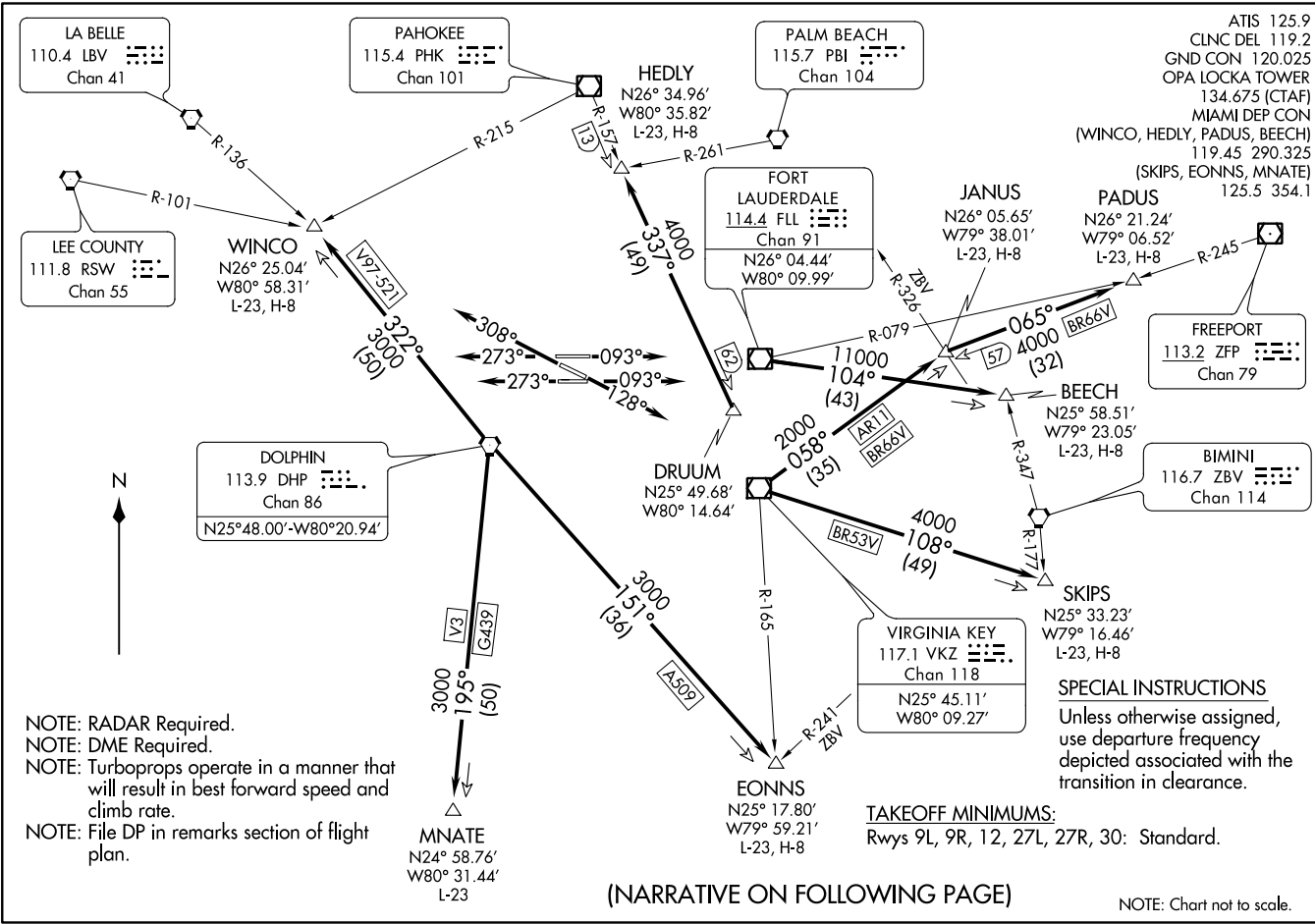


(MIA5.MIA) 17117  
AL-256 (FAA)  
OPA LOCKA EXECUTIVE (OPF)  
MIAMI, FLORIDA



NOTE: RADAR Required.  
 NOTE: DME Required.  
 NOTE: Turboprops operate in a manner that will result in best forward speed and climb rate.  
 NOTE: File DP in remarks section of flight plan.

(NARRATIVE ON FOLLOWING PAGE)

NOTE: Chart not to scale.

MIAMI FIVE DEPARTURE  
(MIA5.MIA) 10DEC15  
MIAMI, FLORIDA  
OPA LOCKA EXECUTIVE (OPF)

# MIAMI FIVE DEPARTURE



## DEPARTURE ROUTE DESCRIPTION

TAKEOFF RWY 9L: Climb heading 093°, thence . . . .

TAKEOFF RWY 9R: Climb heading 093°, thence . . . .

TAKEOFF RWY 12: Climb heading 128°, thence . . . .

TAKEOFF RWY 27R: Climb heading 273°, thence . . . .

TAKEOFF RWY 27L: Climb heading 273°, thence . . . .

TAKEOFF RWY 30: Climb heading 308°, thence . . . .

. . . . maintain 2000 or assigned higher altitude and expect vectors to appropriate transition. Expect further clearance to filed altitude ten (10) minutes after departure.

BEECH TRANSITION (MIA5.BEECH): From over FLL VOR/DME on FLL R-104 to BEECH INT.

EONNS TRANSITION (MIA5.EONNS): From over DHP VORTAC on DHP R-151 to EONNS INT.

HEDLY TRANSITION (MIA5.HEDLY): From over DRUUM DME FIX on PHK R-157 to HEDLY INT.

MNATE TRANSITION (MIA5.MNATE): From over DHP VORTAC on DHP R-195 to MNATE DME FIX.

PADUS TRANSITION (MIA5.PADUS): From over VKZ VOR/DME on VKZ R-058 to JANUS INT and ZFP R-245 to PADUS INT.

SKIPS TRANSITION (MIA5.SKIPS): From over VKZ VOR/DME on VKZ R-108 to SKIPS INT.

WINCO TRANSITION (MIA5.WINCO): From over DHP VORTAC on DHP R-322 to WINCO INT.

(NOTES CONTINUED ON FOLLOWING PAGE)

SE-3, 09 NOV 2017 to 07 DEC 2017

SE-3, 09 NOV 2017 to 07 DEC 2017

# MIAMI FIVE DEPARTURE

### TAKEOFF OBSTACLE NOTES:

- Rwy 9L: Fence 48' from DER, 498' left of centerline, 10' AGL/17' MSL. Utility line 57' from DER, 505' left of centerline, 9' AGL/16' MSL. Airport sign 40' from DER, 311' right of centerline, 2' AGL/9' MSL. Tree 103' from DER, 481' left of centerline, 9' AGL/16' MSL. Trees beginning 1632' from DER, 657' left of centerline, up to 43' AGL/57' MSL. Trees beginning 3215' from DER, 885' right of centerline, up to 81' AGL/95' MSL.
- Rwy 9R: Airfield light 6' from DER, 59' right of centerline, 1' AGL/7' MSL. Light pole 1439' from DER, 739' right of centerline, 38' AGL/45' MSL. Pole 1436' from DER, 735' right of centerline, 40' AGL/47' MSL. Pole 1581' from DER, 892' left of centerline, 40' AGL/47' MSL. Tree 11' from DER, 502' right of centerline, 8' AGL/15' MSL. Trees beginning 1590' from DER, 511' left of centerline, up to 109' AGL/116' MSL. Trees beginning 1577' from DER, 243' right of centerline, up to 57' AGL/64' MSL.
- Rwy 12: REIL 3' from DER, 118' left of centerline 1' AGL/9' MSL. REIL 3' from DER 118' right of centerline, 1' AGL/9' MSL. Poles 1560' from DER, 266' right of centerline, 40' AGL/48' MSL. Pole 461' from DER, 609' right of centerline, 31' AGL/39' MSL. Trees beginning 1080' from DER, 118' right of centerline, up to 62' AGL/70' MSL. Trees beginning 1051' from DER, 93' left of centerline, up to 56' AGL/64' MSL.
- Rwy 27L: Fence 194' from DER, 483' right of centerline, 10' AGL/16' MSL. Poles beginning 336' from DER, 94' left and 530' right of centerline, up to 67' AGL/73' MSL. Trees beginning 1056' from DER, 756' left of centerline, up to 37' AGL/43' MSL. Building 1106' from DER, 739' right of centerline, 36' AGL/42' MSL.
- Rwy 27R: Airport sign 38' from DER, 310' left of centerline, 1' AGL/8' MSL. Antenna on building 1568' from DER, 756' left of centerline, 44' AGL/51' MSL. Trees beginning 165' from DER, 45' left of centerline, up to 115' AGL/122' MSL. Trees beginning 1059' from DER, 229' right of centerline, up to 107' AGL/114' MSL.
- Rwy 30: Airport sign 40' from DER, 233' right of centerline, 1' AGL/9' MSL. Tower 2543' from DER, 565' right of centerline, 76' AGL/84' MSL. Antenna on building 2526' from DER, 572' right of centerline, 74' AGL/82' MSL. Tower 3760' from DER, 969' right of centerline, 100' AGL/105' MSL. Trees beginning 1312' from DER, 590' left of centerline, up to 43' AGL/51' MSL. Trees beginning 1711' from DER, 614' right of centerline, up to 78' AGL/86' MSL.

SE-3, 09 NOV 2017 to 07 DEC 2017

SE-3, 09 NOV 2017 to 07 DEC 2017

# MIAMI FIVE DEPARTURE