

APP CRS	Rwy Idg	3779
263°	TDZE	632
	Apt Elev	634

RNAV (GPS) RWY 26

GRIFFITH-MERRILLVILLE (Ø5C)

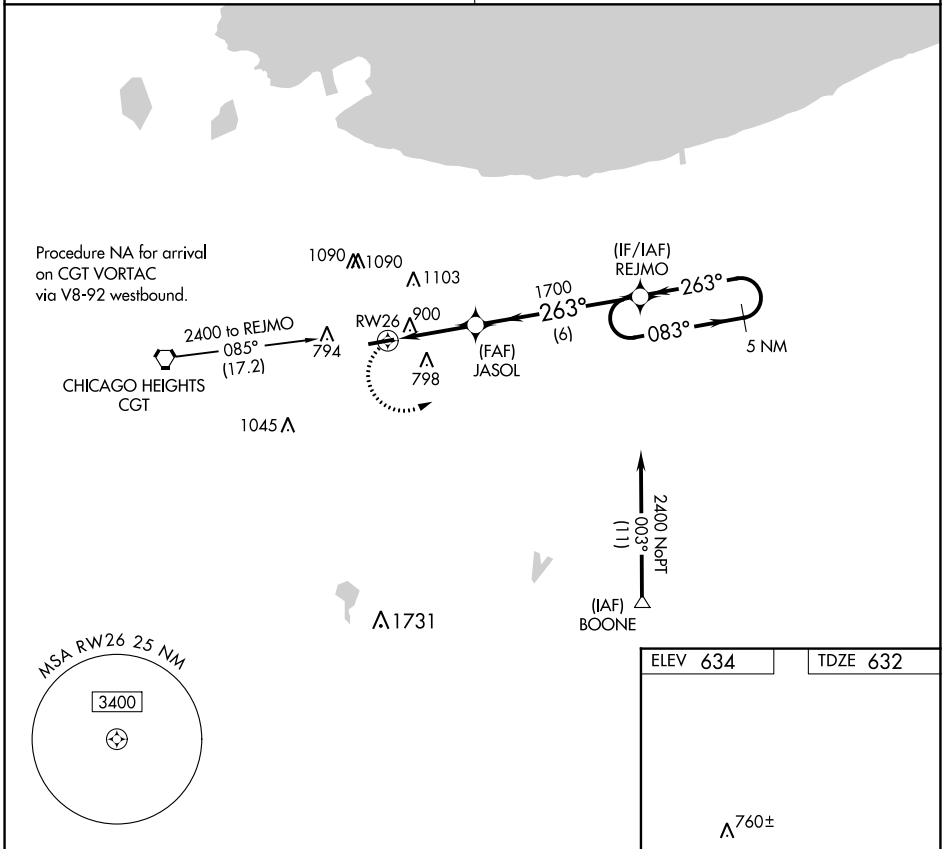
RNP APCH

Obtain local altimeter setting on CTAF; when not received use Chicago Midway Intl altimeter setting and increase all MDAs 60 feet. Visibility reduction by helicopters NA. Procedure NA at night.

MISSED APPROACH: Climbing left turn to 2400 direct REJMO and hold.

CHICAGO APP CON
133.1 285.6

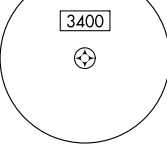
UNICOM
123.0 (CTAF)



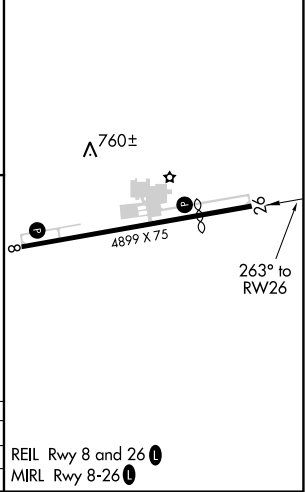
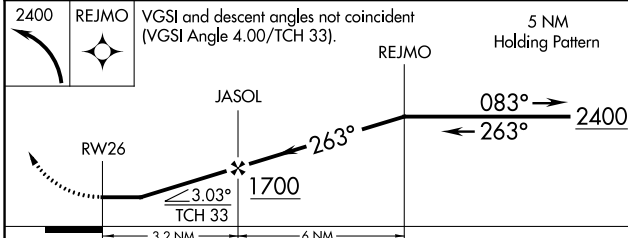
EC-2, 22 FEB 2024 to 21 MAR 2024

EC-2, 22 FEB 2024 to 21 MAR 2024

MSA RW26 25 NM



ELEV 634	TDZE 632
----------	----------



CATEGORY	A	B	C	D
LNAV MDA	1160-1	528 (600-1)		NA
CIRCLING	1200-1	566 (600-1)		NA

REL Rwy 8 and 26
MIRL Rwy 8-26

APP CRS	Rwy Idg	4899
083°	TDZE	634
	Apt Elev	634

RNAV (GPS) RWY 8

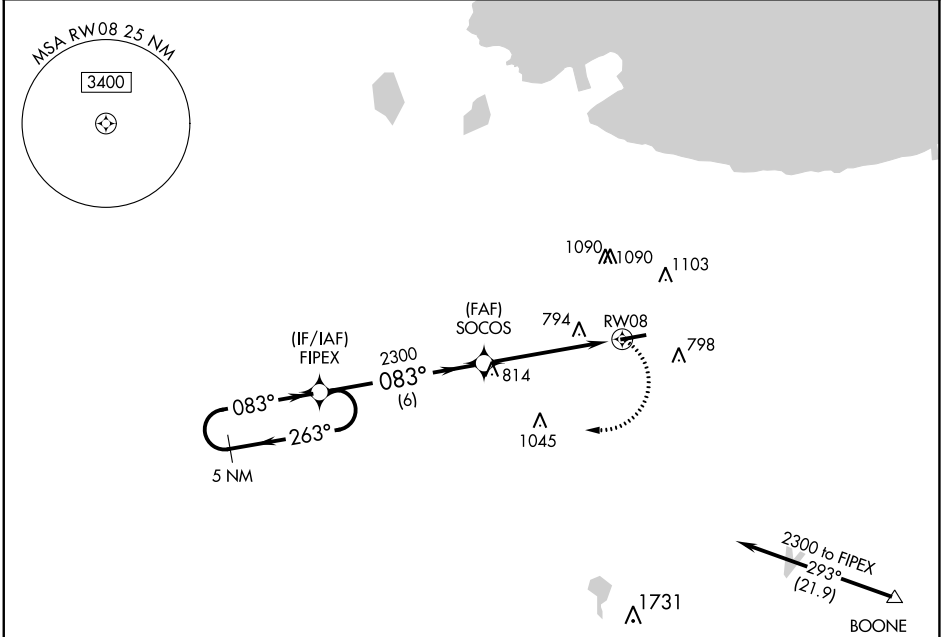
GRIFFITH-MERRILLVILLE (Ø5C)

RNP APCH.
 ▼ Obtain local altimeter setting on CTAF; when not received use Chicago Midway
 ▲ NA Init altimeter setting and increase all MDAs 60 feet. Visibility reduction by
 helicopters NA. Procedure NA at night.

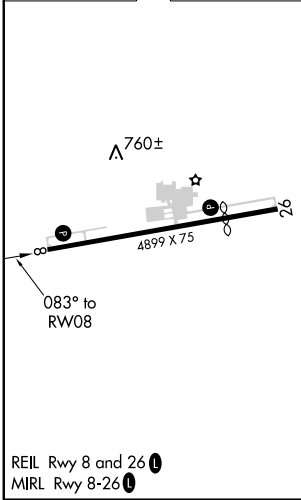
MISSED APPROACH: Climbing right
 turn to 2300 direct FIPEX and hold.

CHICAGO APP CON
133.1 285.6

UNICOM
123.0 (CTAF) 0



ELEV 634	TDZE 634
----------	----------



	2300	FIPEX		
CATEGORY	A	B	C	D
LNAV MDA	1080-1	446 (500-1)		NA
CIRCLING	1200-1	566 (600-1)		NA

EC-2, 22 FEB 2024 to 21 MAR 2024

EC-2, 22 FEB 2024 to 21 MAR 2024

GRIFFITH, INDIANA

AL-5431 (FAA)

23166

VORTAC CGT 114.2 Chan 89	APP CRS 084°	Rwy Idg TDZE 634 Apt Elev 634	4899
--	------------------------	---	-------------

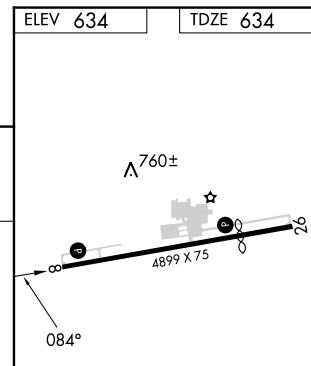
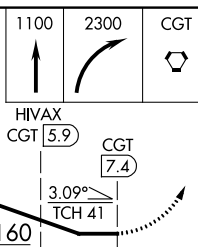
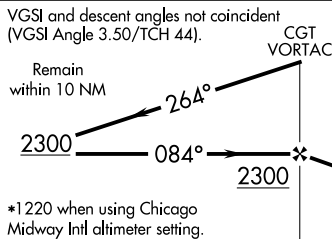
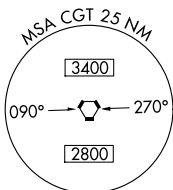
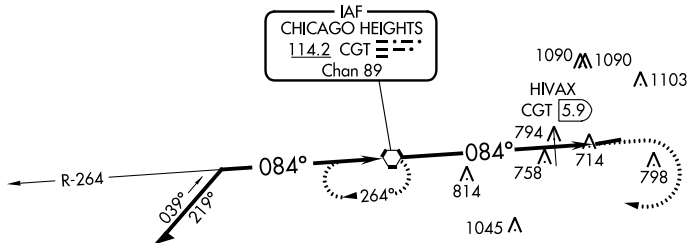
VOR RWY 8
GRIFFITH-MERRILLVILLE (05C)

NA Obtain local altimeter setting on CTAF; when not received, use Chicago Midway Intl altimeter setting and increase all MDAs 60 feet. Visibility reduction by helicopters NA. Procedure NA at night.

MISSED APPROACH: Climb to 1100 then climbing right turn to 2300 direct CGT VORTAC and hold.

CHICAGO APP CON
133.1 285.6

UNICOM
123.0 (CTAF) 0



CATEGORY	A	B	C	D
S-8	1160-1	526 (600-1)		NA
CIRCLING	1200-1	566 (600-1)		NA
HIVAX FIX MINIMUMS				
S-8	1060-1	426 (500-1)		NA
CIRCLING	1200-1	566 (600-1)		NA

REIL Rwy 8 and 26	0
MIRL Rwy 8-26	0
FAF to MAP 7.4 NM	
Knots	60 90 120 150 180
Min:Sec	7:24 4:56 3:42 2:58 2:28

GRIFFITH, INDIANA
Amdt 8B 24MAY18

41°31'N-87°24'W

GRIFFITH-MERRILLVILLE (05C)
VOR RWY 8

EC-2, 22 FEB 2024 to 21 MAR 2024

EC-2, 22 FEB 2024 to 21 MAR 2024