

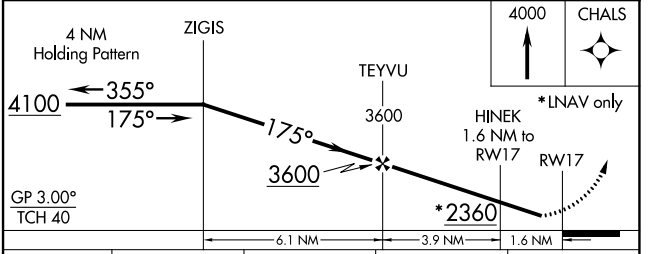
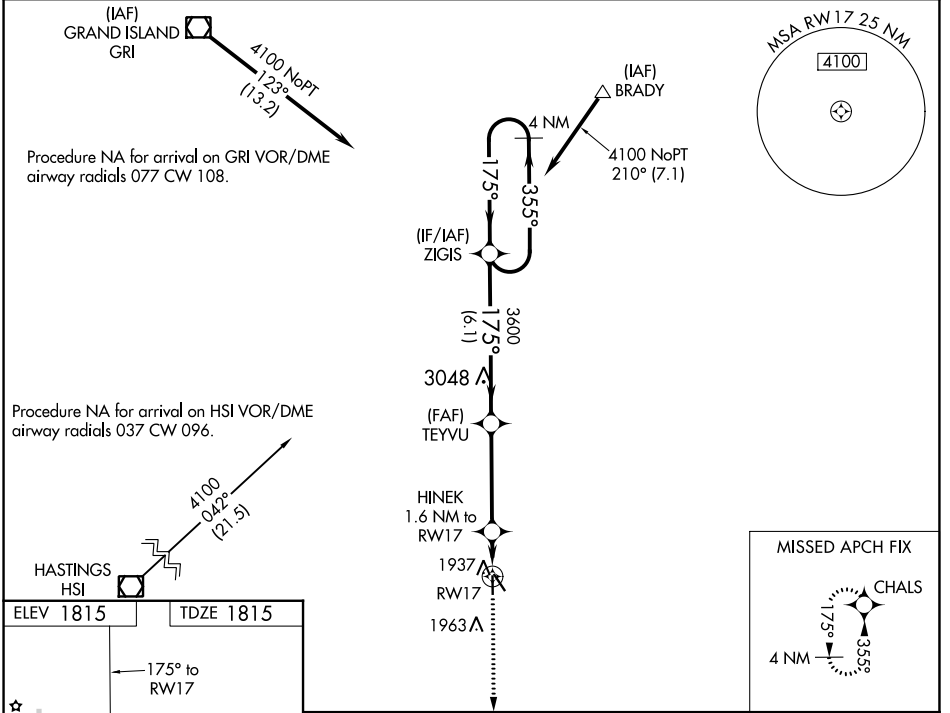
WAAS CH 99631 W17A	APP CRS 175°	Rwy Idg TDZE Apt Elev	3722 1815 1815
--	------------------------	-----------------------------	---

RNAV (GPS) RWY 17

HARVARD STATE (Ø8K)

RNP APCH.	MISSED APPROACH: Climb to 4000 direct CHALS and hold.
<p>▼ Baro-VNAV NA. Use Aurora Muni altimeter setting; when not received, use Central Nebraska Rgnl altimeter setting; increase LPV DA to 2120 feet, increase LNAV/VNAV DA to 2135 feet and visibility all Cats ½ SM, increase all MDAs 20 feet. Rwy 17 helicopter visibility reduction below ¾ SM NA.</p> <p>▲ NA</p>	

AUH AWOS-3 121.225	MINNEAPOLIS CENTER 119.4 278.8	CTAF 122.90
------------------------------	--	-----------------------



CATEGORY	A	B	C	D
LPV DA	2102-1	287 (300-1)	NA	
LNAV/VNAV DA	2117-1	302 (400-1)	NA	
LNAV MDA	2280-1 465 (500-1)	2300-1 485 (500-1)	NA	

NC-2, 22 FEB 2024 to 21 MAR 2024

NC-2, 22 FEB 2024 to 21 MAR 2024

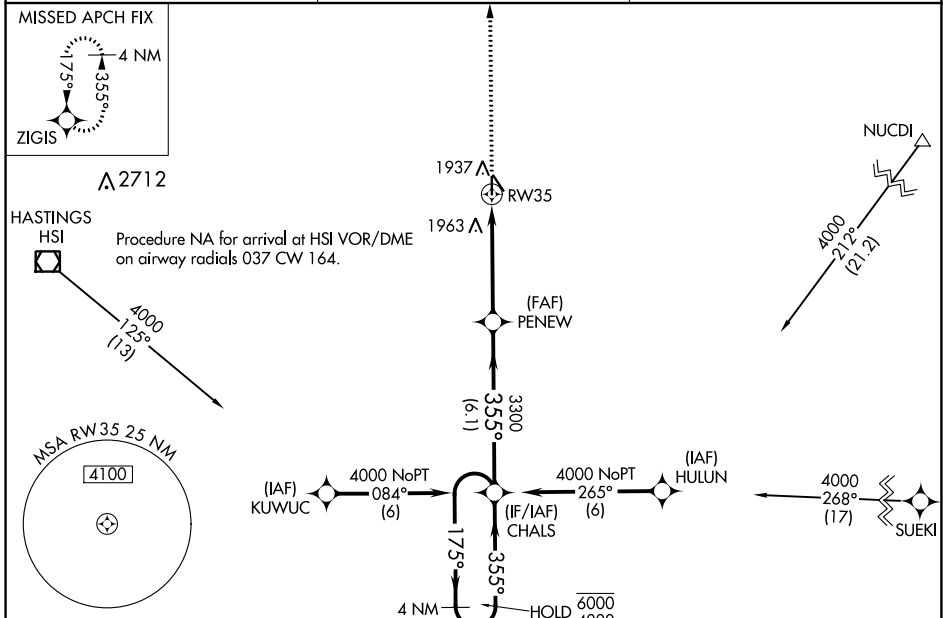
WAAS CH 86531 W35A	APP CRS 355°	Rwy ldg 3722 TDZE 1814 Apt Elev 1815
--	------------------------	---

RNAV (GPS) RWY 35

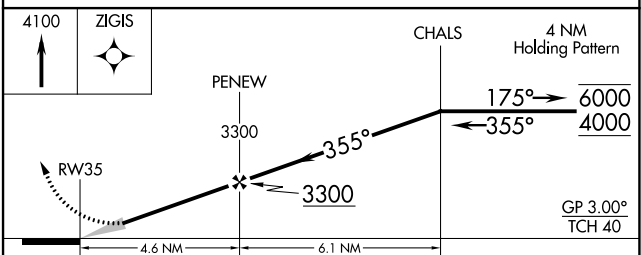
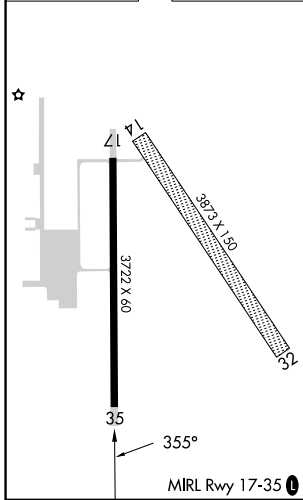
HARVARD STATE (Ø8K)

RNP APCH.	Baro-VNAV NA. Use Aurora altimeter setting; when not received, use Grand Island altimeter setting; increase LPV DA to 2119 feet and LNAV/VNAV DA to 2311 feet; increase all MDAs 20 feet.	MISSED APPROACH: Climb to 4100 direct ZIGIS and hold.
-----------	---	---

AUH AWOS-3 121.225	MINNEAPOLIS CENTER 119.4 278.8	CTAF 122.9
------------------------------	--	----------------------



ELEV 1815	TDZE 1814
-----------	-----------



CATEGORY	A	B	C	D
LPV DA	2101-1	287 (300-1)		NA
LNAV/VNAV DA	2293-1 ³ / ₈	479 (500-1 ³ / ₈)		NA
LNAV MDA	2320-1	506 (600-1)		NA

NC-2, 22 FEB 2024 to 21 MAR 2024

NC-2, 22 FEB 2024 to 21 MAR 2024