

WAAS CH 56236 W23A	APP CRS 234°	Rwy ldg TDZE 265 Apt Elev 265	4460
--	------------------------	---	-------------

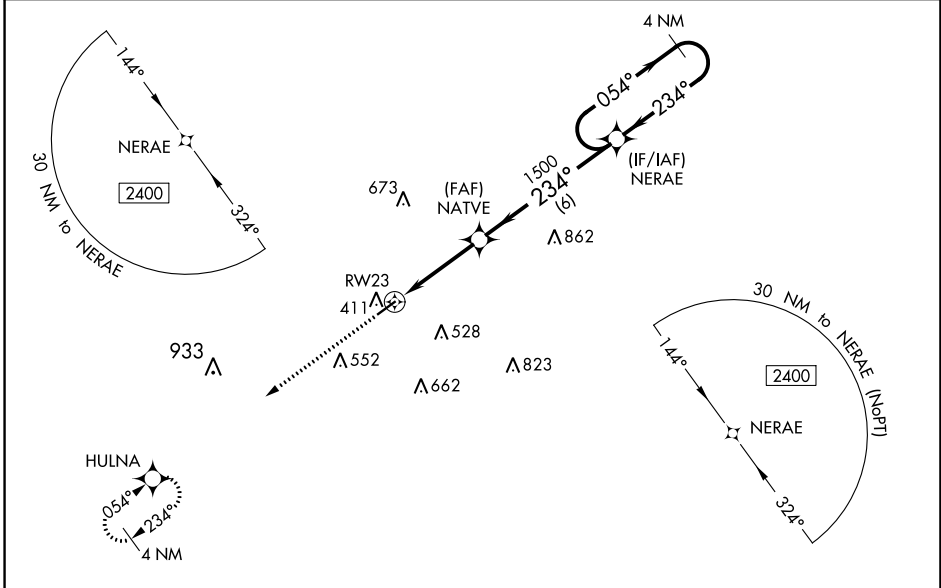
RNAV (GPS) RWY 23

COLUMBIA-MARION COUNTY (ØRØ)

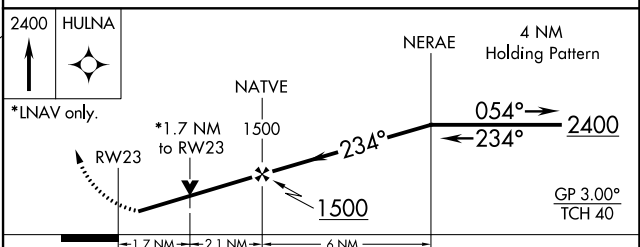
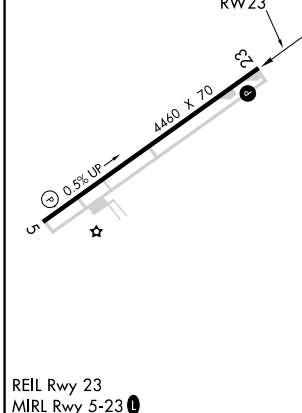
⚠ For uncompensated Baro-VNAV systems, LNAV/VNAV NA below -15°C (5°F) or above 54°C (130°F). DME/DME RNP-0.3 NA. When local altimeter setting not received, use Hattiesburg-Laurel altimeter setting and increase all DA 66 feet and all MDA 80 feet; increase LPV and LNAV/VNAV all Cats and Circling Cat C visibilities ¼ mile, increase Circling Cat D visibility ½ mile, increase LNAV Cat C and D visibility ½ mile. VDP and Baro-VNAV NA when using Hattiesburg-Laurel altimeter setting. Rwy 23 helicopter visibility reduction below ¾ SM NA.

MISSED APPROACH:
Climb to 2400 direct HULNA and hold.

AWOS-3PT 120.675	HOUSTON CENTER 126.8 327.8	UNICOM 122.8 (CTAF) Ø
----------------------------	--------------------------------------	---------------------------------



ELEV 265	TDZE 265
----------	----------



CATEGORY	A	B	C	D
LPV DA		534-7/8	269 (300-7/8)	
LNAV/VNAV DA		766-1¾	501 (600-1¾)	
LNAV MDA	860-1	595 (600-1)	860-1¾	595 (600-1¾)
C CIRCLING	860-1	595 (600-1)	920-1¾	1000-2¼
			655 (700-1¾)	735 (800-2¼)

SC-4, 15 JUL 2021 to 12 AUG 2021

SC-4, 15 JUL 2021 to 12 AUG 2021

WAAS CH 81836 W05A	APP CRS 054°	Rwy Idg TDZE 256 Apt Elev 265	4460
--	------------------------	---	-------------

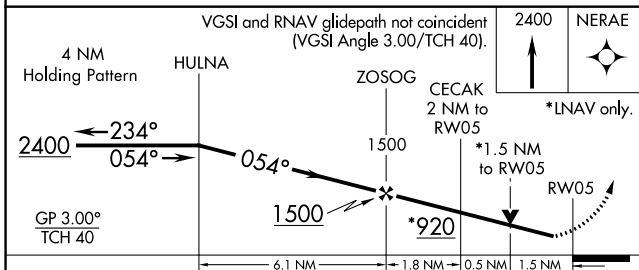
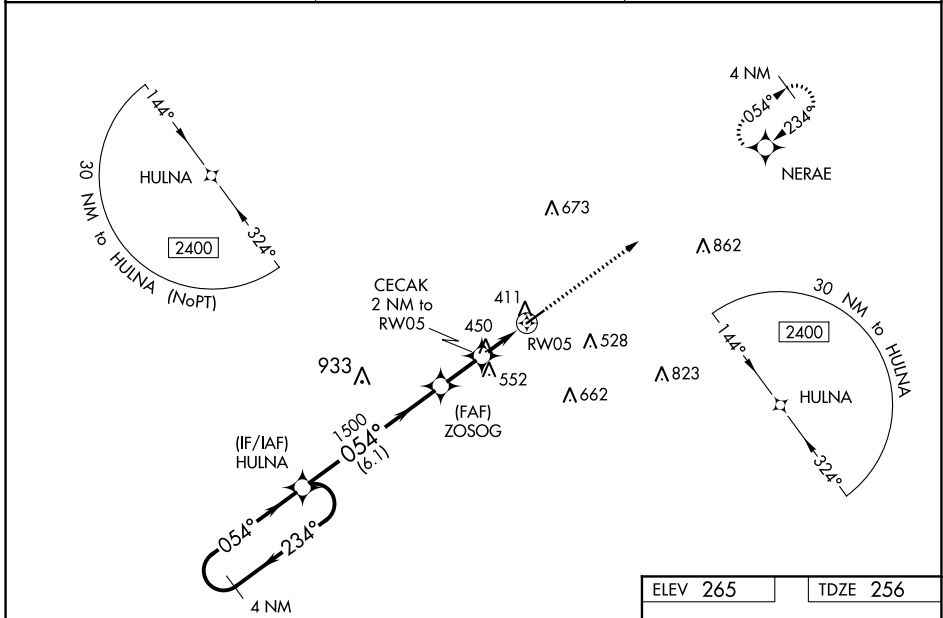
RNAV (GPS) RWY 5

COLUMBIA-MARION COUNTY (ØRØ)

⚠ For uncompensated Baro-VNAV systems, LNAV/VNAV NA below -15°C (5°F) or above 54°C (130°F). DME/DME RNP-0.3 NA. When local altimeter setting not received, use Hattiesburgh-Laurel Rgnl altimeter setting and increase all DA 66 feet and all MDA 80 feet; increase LPV all Cats visibility 1/8 mile and LNAV/VNAV all Cats and Circling Cat C visibilities 1/4 mile, increase Circling Cat D visibility 1/2 mile, increase LNAV Cat C and D visibility 3/8 mile. VDP and Baro-VNAV NA when using Hattiesburgh-Laurel Rgnl altimeter setting. Rwy 5 helicopter visibility reduction below 3/4 SM NA.

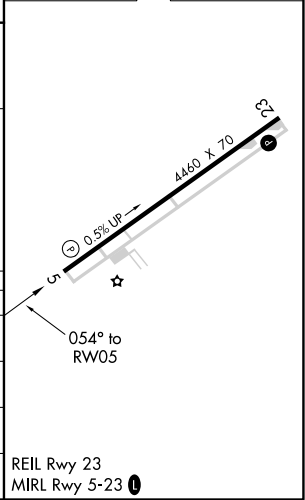
MISSED APPROACH:
Climb to 2400 direct NERAE and hold.

AWOS-3PT 120.675	HOUSTON CENTER 126.8 327.8	UNICOM 122.8 (CTAF) Ø
----------------------------	--------------------------------------	---------------------------------



ELEV 265	TDZE 256
----------	----------

CATEGORY	A	B	C	D
LPV DA		506-7/8	250 (300-7/8)	
LNAV/VNAV DA		744-1 5/8	488 (500-1%)	
LNAV MDA	760-1	504 (500-1)	760-1 3/8	504 (500-1%)
C CIRCLING	760-1 495 (500-1)	820-1 555 (600-1)	920-1 3/4 655 (700-1 3/4)	1000-2 1/4 735 (800-2 1/4)



SC-4, 15 JUL 2021 to 12 AUG 2021

SC-4, 15 JUL 2021 to 12 AUG 2021