

WAAS CH <b>53714</b> <b>W16A</b>	APP CRS <b>159°</b>	Rwy Idg TDZE Apt Elev	<b>3900</b> <b>2160</b> <b>2160</b>
--	------------------------	-----------------------------	---

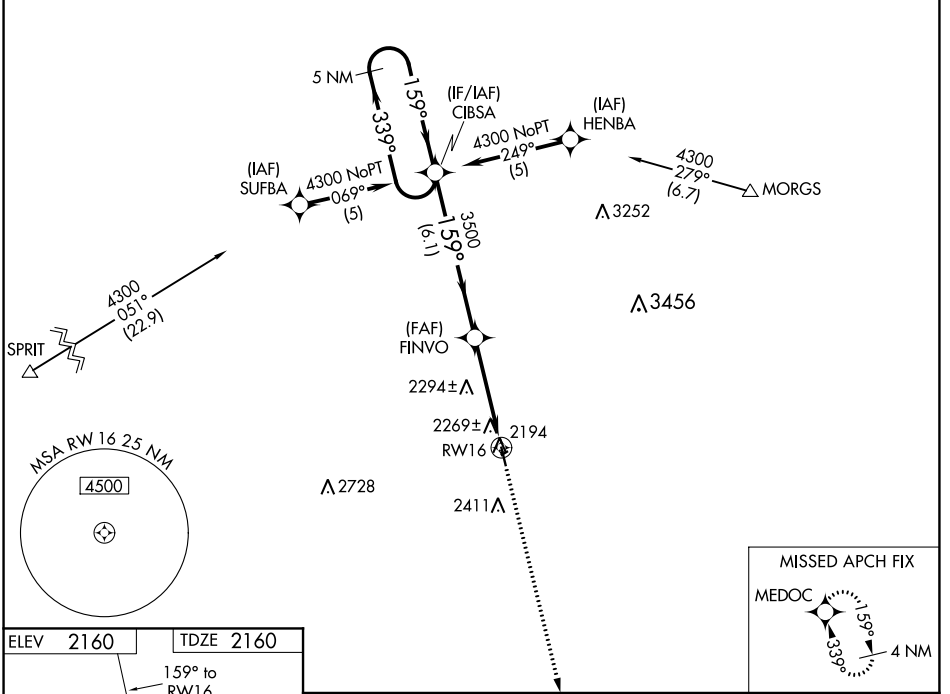
# RNAV (GPS) RWY 16

PIONEER VILLAGE FLD (ØV3)

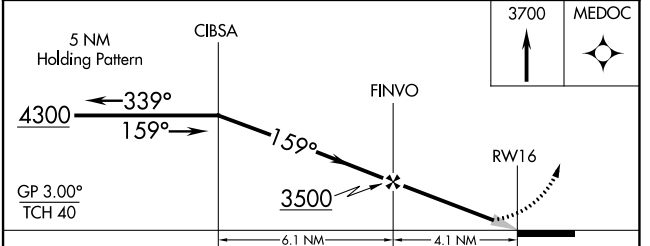
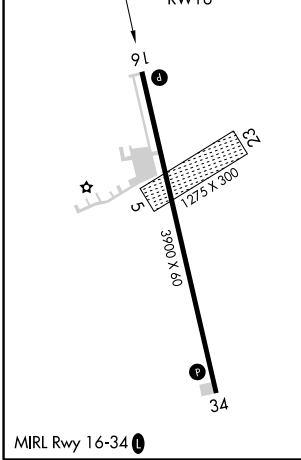
**NA** Baro-VNAV NA. DME/DME RNP-0.3 NA. Use Kearney altimeter setting; when not received, use Holdrege altimeter setting and increase all DA 29 feet and all MDA 40 feet, increase LPV all Cats visibility ¼ mile. Circling NA to Rwy 5/23.

MISSED APPROACH: Climb to 3700 direct MEDOC and hold.

EAR AWOS-3PT <b>123.875</b>	MINNEAPOLIS CENTER <b>119.4 278.8</b>	UNICOM <b>122.7 (CTAF) 0</b>
--------------------------------	--	---------------------------------



ELEV 2160	TDZE 2160
-----------	-----------



CATEGORY	A	B	C	D
LPV DA	2445-1	285 (300-1)		NA
LNAV/VNAV DA	2574-1½	414 (500-1½)		NA
LNAV MDA	2580-1	420 (500-1)		NA
<b>C</b> CIRCLING	2680-1 520 (600-1)	2780-1 620 (700-1)		NA

NC-2, 02 DEC 2021 to 30 DEC 2021

NC-2, 02 DEC 2021 to 30 DEC 2021

APP CRS	Rwy Idg	<b>3900</b>
<b>339°</b>	TDZE	<b>2160</b>
	Apt Elev	<b>2160</b>

# RNAV (GPS) RWY 34

PIONEER VILLAGE FLD (ØV3)

RNP APCH.

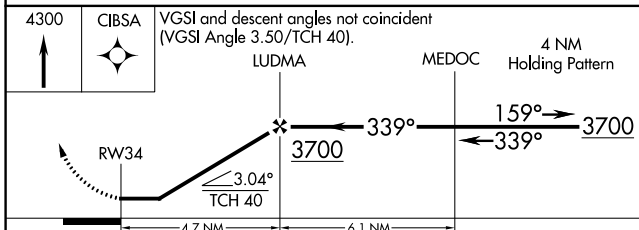
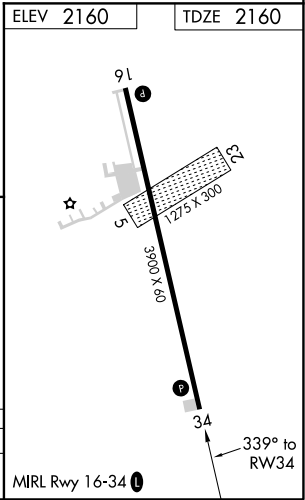
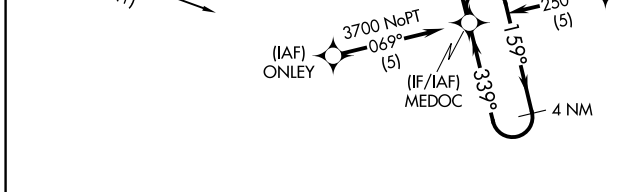
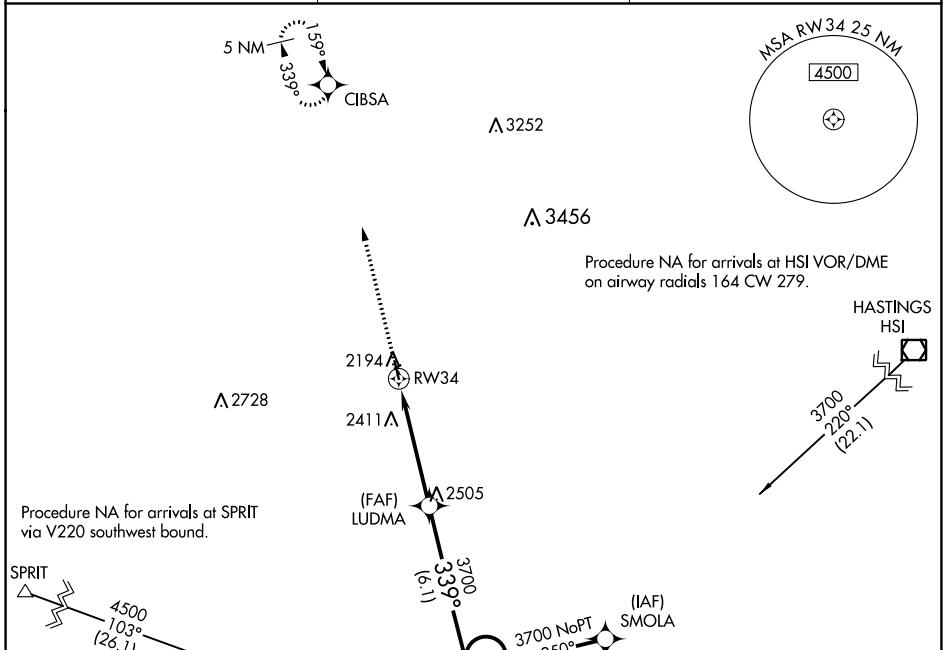
**▽** Rwy 34 helicopter visibility reduction below 3/4 SM NA.  
**▲** NA Use Kearney altimeter setting; when not received, use Holdrege altimeter setting and increase all MDA 40 feet.

MISSED APPROACH: Climb to 4300 direct CIBSA and hold.

EAR AWOS-3PT  
**123.875**

MINNEAPOLIS CENTER  
**119.4 278.8**

UNICOM  
**122.7 (CTAF) 0**



CATEGORY	A	B	C	D
LNAV MDA	2700-1	540 (600-1)		NA

NC-2, 02 DEC 2021 to 30 DEC 2021

NC-2, 02 DEC 2021 to 30 DEC 2021