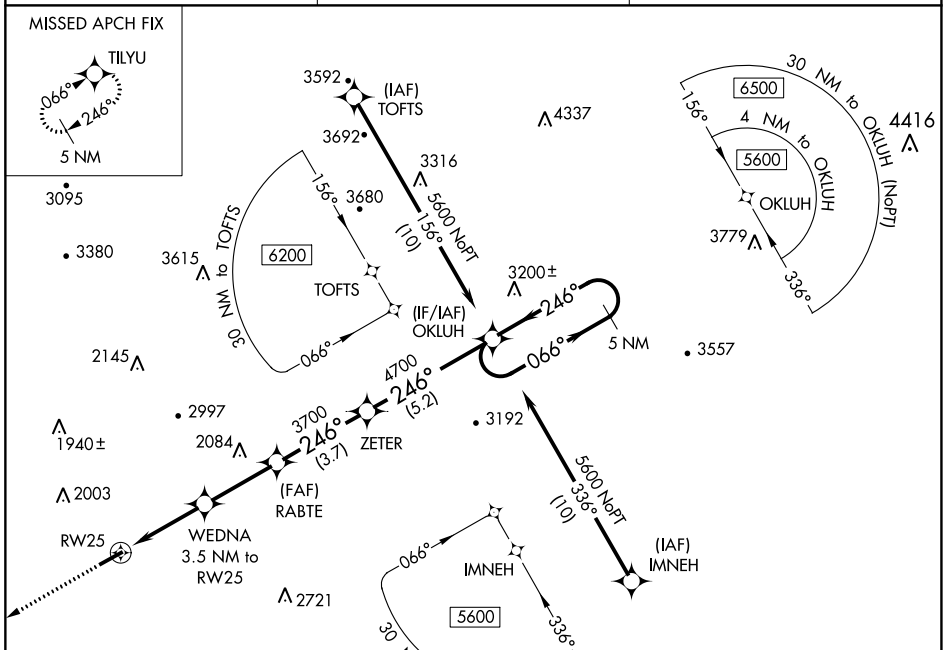


WAAS CH 82717 W25A	APP CRS 246°	Rwy Idg TDZE Apt Elev	5003 1411 1411
--	------------------------	-----------------------------	---

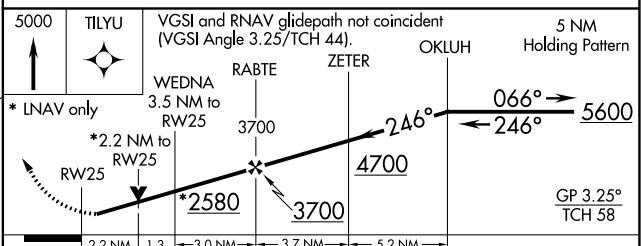
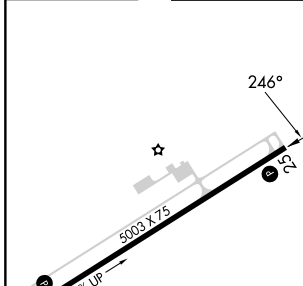
RNAV (GPS) RWY 25

LEE COUNTY (ØVG)

<p>▼ Helicopter visibility reduction below ¾ SM NA. ▲ DME/DME RNP-0.3 NA.</p>	<p>MISSED APPROACH: Climb to 5000 direct TILYU and hold, continue climb-in-hold to 5000.</p>	
<p>AWOS-3 120.125</p>	<p>ATLANTA CENTER 127.55 269.50</p>	<p>CTAF 122.90</p>



ELEV 1411	TDZE 1411
-----------	-----------



CATEGORY	A	B	C	D
LPV DA	1714-1	303 (400-1)		NA
LNAV/DA VNAV	2284-3	873 (900-3)		NA
LNAV MDA	2220-1 809 (900-1)	2220-1¼ 809 (900-1¼)	2220-2½ 809 (900-2½)	NA
C CIRCLING	2220-1 809 (900-1)		2600-3 1189 (1200-3)	NA

NE-3, 22 FEB 2024 to 21 MAR 2024

NE-3, 22 FEB 2024 to 21 MAR 2024

