

WAAS CH 53428 W14A	APP CRS 140°	Rwy Idg TDZE Apt Elev	4301 1692 1692
--	------------------------	-----------------------------	---

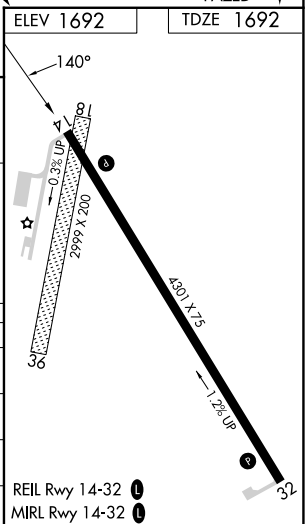
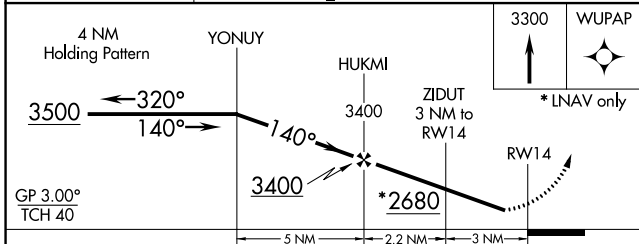
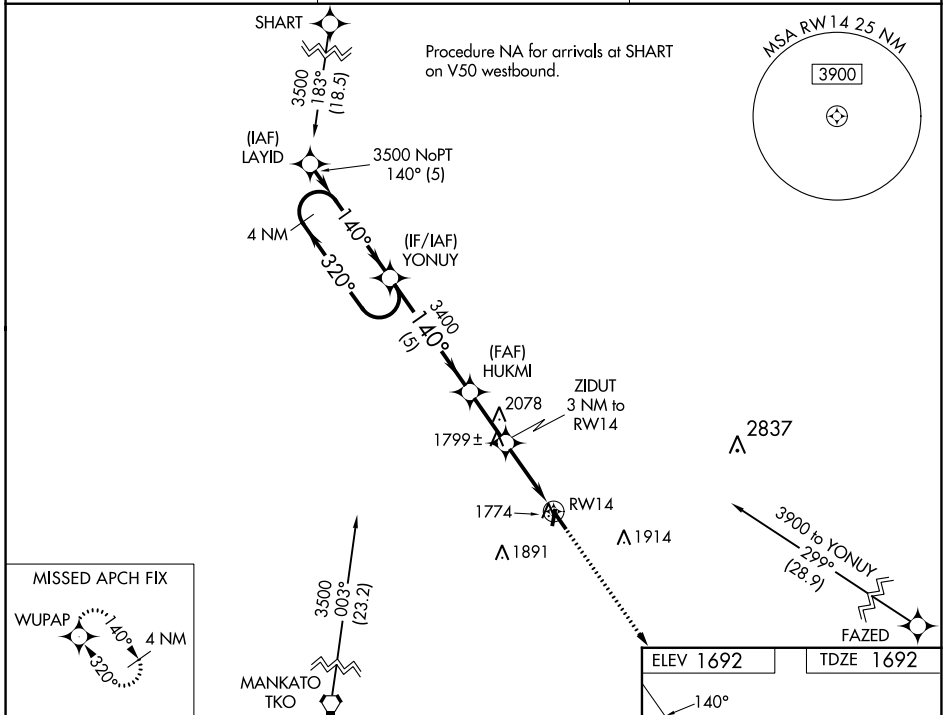
RNAV (GPS) RWY 14

SUPERIOR MUNI (12K)

NA DME/DME RNP-0.3 NA. Helicopter visibility reduction below 3/4 SM NA. Baro-VNAV NA. Use Hebron altimeter setting, when not received use Hastings altimeter setting and increase all DA 41 feet and all MDA 60 feet, increase LPV and LNAV/VNAV Cats A/B/C visibility to 1 1/4, increase Circling Cat C visibility to 2. Night Landing: Rwy 18, 36 NA.

MISSED APPROACH:
Climb to 3300 direct WUPAP and hold.

HJH AWOS-3 118.525	MINNEAPOLIS CENTER 119.4 278.8	UNICOM 123.0 (CTAF)
------------------------------	--	-------------------------------



CATEGORY	A	B	C	D
LPV DA	2026-1 1/8	334 (400-1 1/8)		NA
LNAV/VNAV DA	2026-1 1/8	334 (400-1 1/8)		NA
LNAV MDA	2140-1	448 (500-1)	2140-1 3/8 448 (500-1 3/8)	NA
CIRCLING	2360-1	668 (700-1)	2360-1 3/4 668 (700-1 3/4)	NA

NC-2, 22 FEB 2024 to 21 MAR 2024

NC-2, 22 FEB 2024 to 21 MAR 2024