

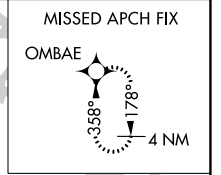
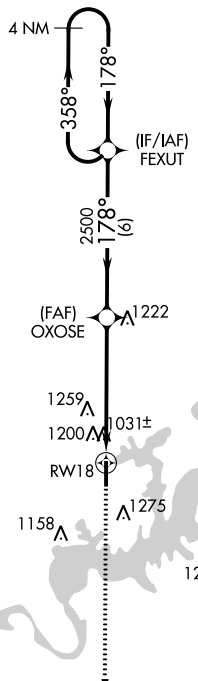
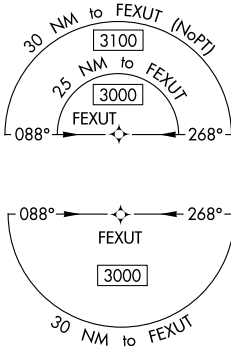
WAAS CH <b>81840</b> <b>W18A</b>	APP CRS <b>178°</b>	Rwy ldg <b>4228</b> TDZE <b>779</b> Apt Elev <b>783</b>
--	------------------------	---

# RNAV (GPS) RWY 18

SOUTH GRAND LAKE RGNL (1K8)

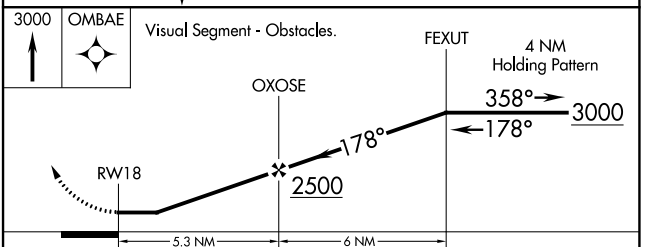
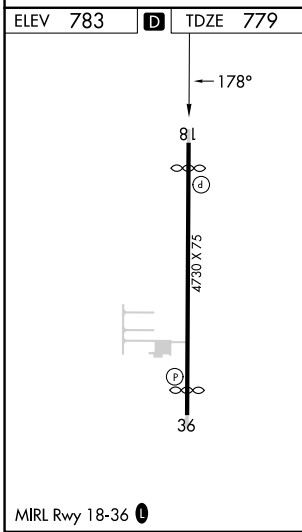
RNP APCH - GPS.	MISSED APPROACH: Climb to 3000 direct OMBAE and hold.
Rwy 18 helicopter visibility reduction below 1 SM NA. Use South Grand Lake Rgnl altimeter setting; when not received, use Grove altimeter setting. Straight-in Rwy 18 NA at night, Circling Rwy 18 NA at night.	

AWOS-3PT <b>118,15</b>	KANSAS CITY CENTER <b>128,6 282,325</b>	CTAF <b>122,9</b>
---------------------------	--	----------------------



SC-1, 22 FEB 2024 to 21 MAR 2024

SC-1, 22 FEB 2024 to 21 MAR 2024



CATEGORY	A	B	C	D
LP MDA	1320-1	541 (600-1)	1320-1½ 541 (600-1½)	NA
LNAV MDA	1500-1	721 (800-1)	1500-2 721 (800-2)	NA
<b>C</b> CIRCLING	1540-1 757 (800-1)	1620-1¼ 837 (900-1¼)	1620-2½ 837 (900-2½)	NA

WAAS CH <b>69239</b> <b>W36A</b>	APP CRS <b>358°</b>	Rwy ldg <b>4238</b> TDZE <b>779</b> Apt Elev <b>783</b>
--	------------------------	---

# RNAV (GPS) RWY 36

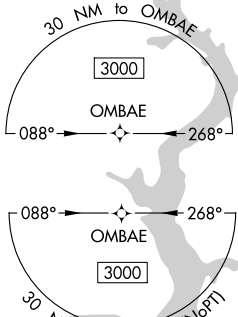
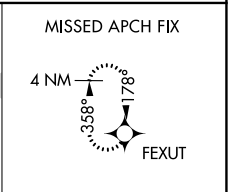
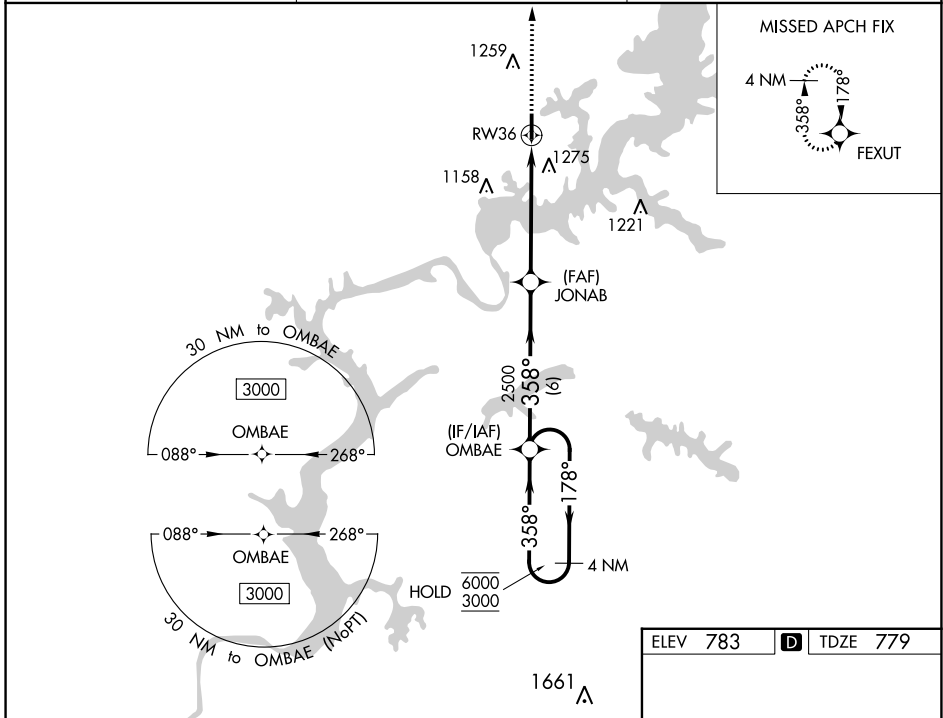
SOUTH GRAND LAKE RGNL (1K8)

RNP APCH - GPS.

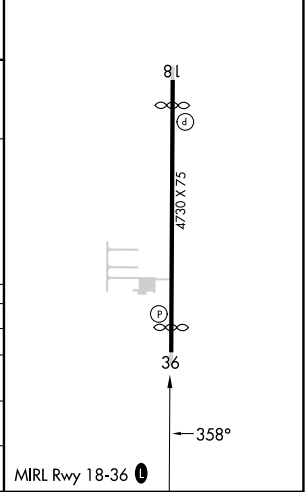
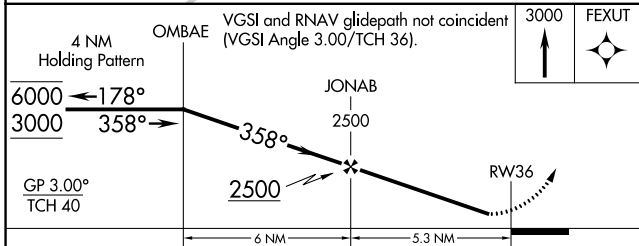
**⚠** Circling to Rwy 18 NA at night. Rwy 36 helicopter visibility reduction below  $\frac{3}{4}$  SM NA. Baro-VNAV NA. Use South Grand Lake Rgnl altimeter setting; when not received, use Grove altimeter setting.

**⚠** MISSED APPROACH: Climb to 3000 direct FEXUT and hold.

AWOS-3PT <b>118,15</b>	KANSAS CITY CENTER <b>128,6 282,325</b>	CTAF <b>122,9</b>
---------------------------	--	----------------------



ELEV 783	<b>D</b> TDZE 779
----------	-------------------



CATEGORY	A	B	C	D
LPV DA	1068-1		289 (300-1)	NA
LNAV/VNAV DA	1635-2½		856 (900-2½)	NA
LNAV MDA	1540-1 761 (800-1)	1540-1¼ 761 (800-1¼)	1540-2½ 761 (800-2½)	NA
<b>C</b> CIRCLING	1540-1 757 (800-1)	1620-1¼ 837 (900-1¼)	1620-2½ 837 (900-2½)	NA

MIRL Rwy 18-36 **⓪**

SC-1, 22 FEB 2024 to 21 MAR 2024

SC-1, 22 FEB 2024 to 21 MAR 2024