

# RNAV (GPS) Y RWY 21

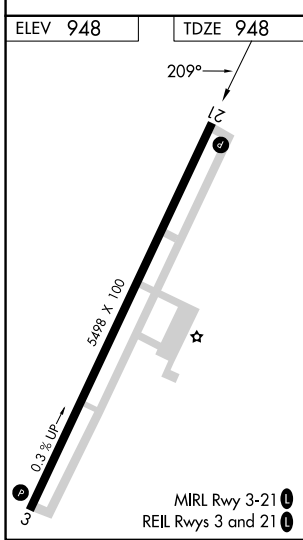
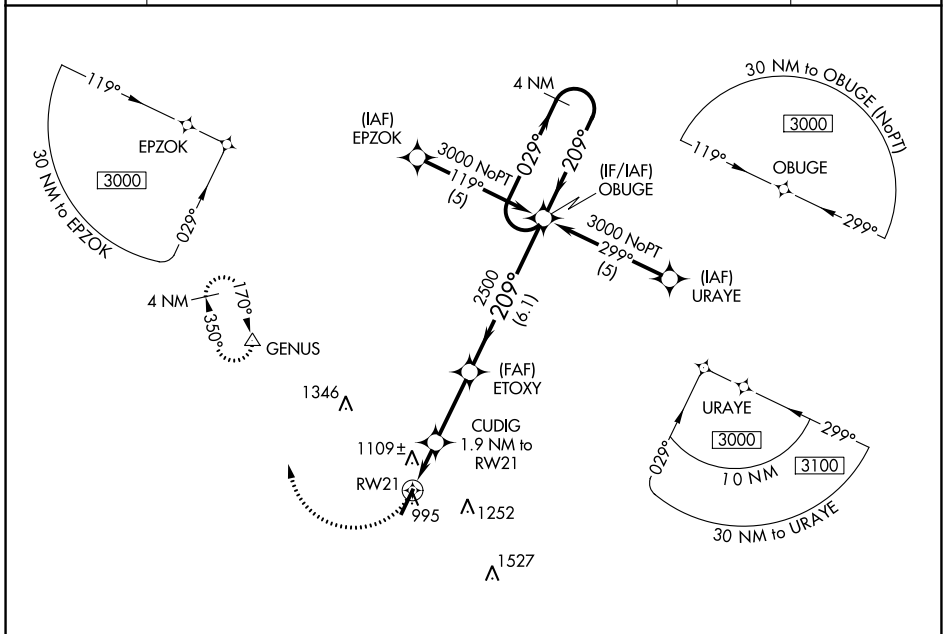
GEORGETOWN-SCOTT COUNTY RGNL (27K)

APP CRS	Rwy Idg	<b>5498</b>
<b>209°</b>	TDZE	<b>948</b>
	Apt Elev	<b>948</b>

**NA** DME/DME RNP-0.3 NA. VDP NA with Lexington altimeter setting. When local altimeter setting not received, use Lexington altimeter setting and increase all MDAs 40 feet, increase LNAV Cats C/D and Circling Cat D visibility ¼ SM.

**MISSED APPROACH:** Climbing right turn to 3000 direct GENUS and hold.

AWOS-3 <b>119.975</b>	LEXINGTON APP CON <b>120.15 259.3 (040° - 220°) 120.75 298.9 (221° - 039°)</b>	CLNC DEL <b>127.425</b>	UNICOM <b>123.0 (CTAF)</b>
--------------------------	---	----------------------------	-------------------------------



3000	GENUS	CUDIG 1.9 NM to RW21	ETOXY	OBUGE	4 NM Holding Pattern
		1.2 NM to RW21	3.04° TCH 30		
		1.2 NM	0.7 NM	2.8 NM	6.1 NM
CATEGORY	A	B	C	D	
LNAV MDA	1360-1	412 (500-1)	1360-1¼	412 (500-1¼)	
CIRCLING	1420-1	472 (500-1)	1560-1¾ 612 (700-1¾)	1660-2¼ 712 (800-2¼)	

SE-1, 22 FEB 2024 to 21 MAR 2024

SE-1, 22 FEB 2024 to 21 MAR 2024