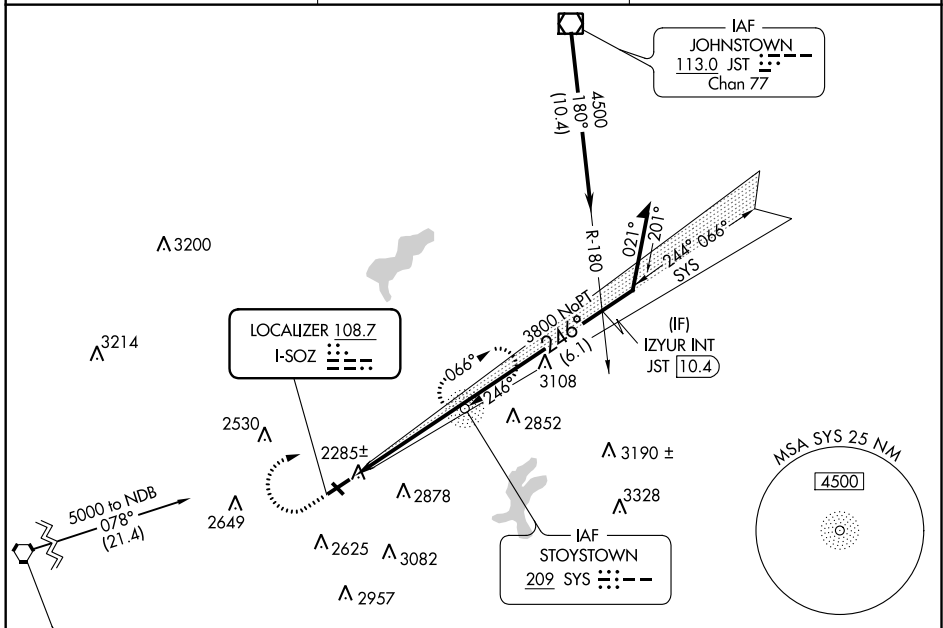


LOC I-SOZ 108.7	APP CRS 246°	Rwy Idg TDZE Apt Elev	5002 2240 2275
---------------------------	------------------------	-----------------------------	---

LOC RWY 25

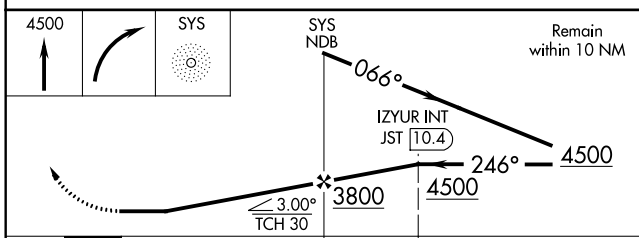
SOMERSET COUNTY (2G9)

ADF required.		MISSED APPROACH: Climb to 4500 then right turn direct SYS NDB and hold.
<p>▼ Procedure NA at night. Rwy 25 helicopter visibility reduction below 1 SM NA.</p> <p>▲ Circling NA to Rwy 14 and 32.</p>		
AWOS-3P 133.8	JOHNSTOWN APP CON ★ 121.2 299.2	UNICOM 122.8 (CTAF) 0



NE-4, 07 OCT 2021 to 04 NOV 2021

NE-4, 07 OCT 2021 to 04 NOV 2021



ELEV 2275	TDZE 2240												
<p>MIRL Rwy 7-25 REIL Rwy 7 and 25 0</p> <p>FAF to MAP 4.9 NM</p> <table border="1"> <tr> <td>Knots</td> <td>60</td> <td>90</td> <td>120</td> <td>150</td> <td>180</td> </tr> <tr> <td>Min:Sec</td> <td>4:54</td> <td>3:16</td> <td>2:27</td> <td>1:58</td> <td>1:38</td> </tr> </table>		Knots	60	90	120	150	180	Min:Sec	4:54	3:16	2:27	1:58	1:38
Knots	60	90	120	150	180								
Min:Sec	4:54	3:16	2:27	1:58	1:38								

WAAS CH 82205 W25A	APP CRS 246°	Rwy Idg TDZE Apt Elev	5002 2240 2275
--	------------------------	-----------------------------	---

RNAV (GPS) RWY 25

SOMERSET COUNTY (2G9)

⚠ NA Baro-VNAV NA when using Johnstown altimeter setting. For uncompensated Baro-VNAV systems, LNAV/VNAV NA below -19°C (-2°F) or above 53°C (128°F). DME/DME RNP-0.3 NA. Procedure NA at night. Helicopter visibility reduction below 1 SM NA. Circling NA to Rwy 14-32. When local altimeter setting not received, use Johnstown altimeter setting and increase all DA 44 feet and all MDA 60 feet. Increase LPV all Cats and LNAV/VNAV all Cats visibility 1/8 mile and increase LNAV Cat C/D visibility 1/4 mile.

MISSED APPROACH:
Climb to 5600 direct KAVGY and hold.

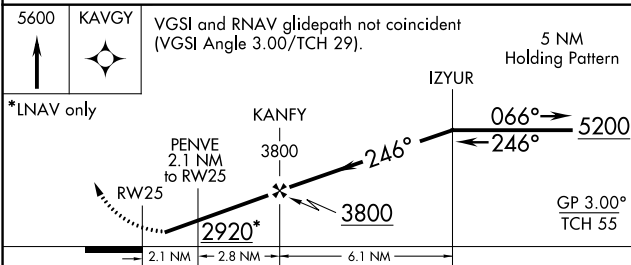
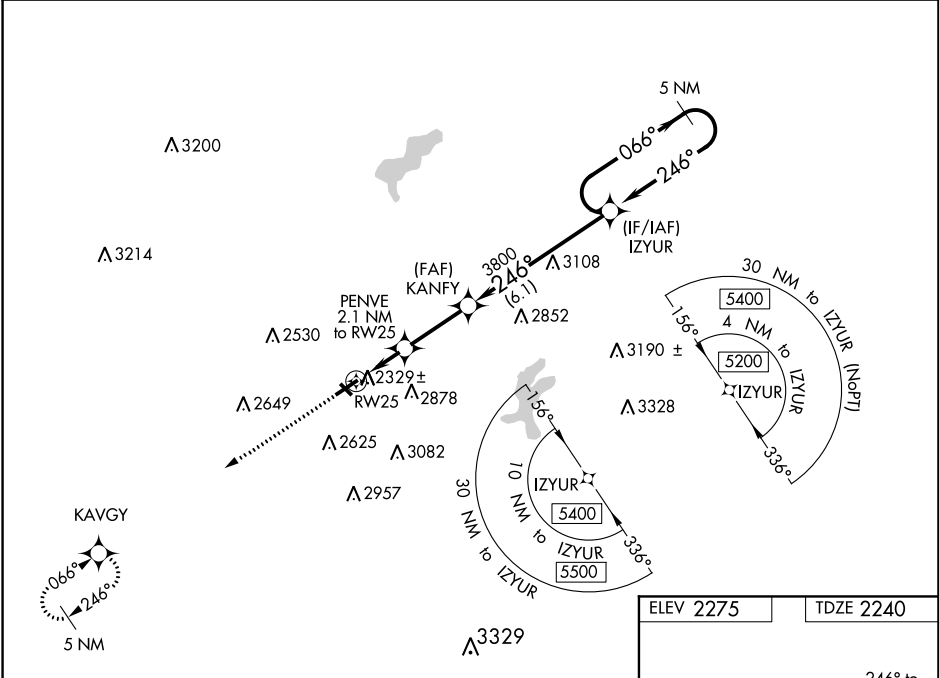
AWOS-3P
133.8

JOHNSTOWN APP CON ★
121.2 299.2

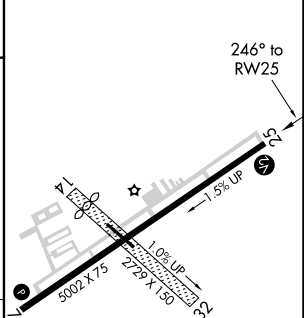
UNICOM
122.8 (CTAF) 0

NE-4, 07 OCT 2021 to 04 NOV 2021

NE-4, 07 OCT 2021 to 04 NOV 2021



ELEV 2275	TDZE 2240
-----------	-----------



CATEGORY	A	B	C	D
LPV DA		2490-1	250 (300-1)	
LNAV/VNAV DA		2583-1¼	343 (400-1¼)	
LNAV MDA		2580-1	340 (400-1)	
CIRCLING	2820-1	2920-1	3460-3	3520-3
	545 (600-1)	645 (700-1)	1185 (1200-3)	1245 (1300-3)

MIRL Rwy 7-25
REIL Rws 7 and 25 0

WAAS CH 66005 W07A	APP CRS 066°	Rwy Idg TDZE Apt Elev	5002 2275 2275
--	------------------------	-----------------------------	---

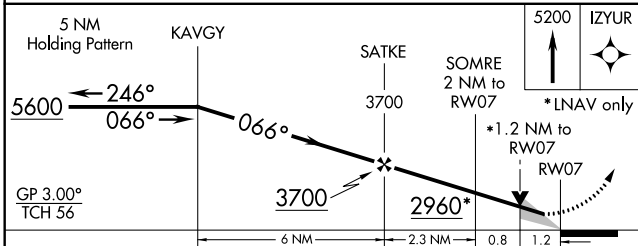
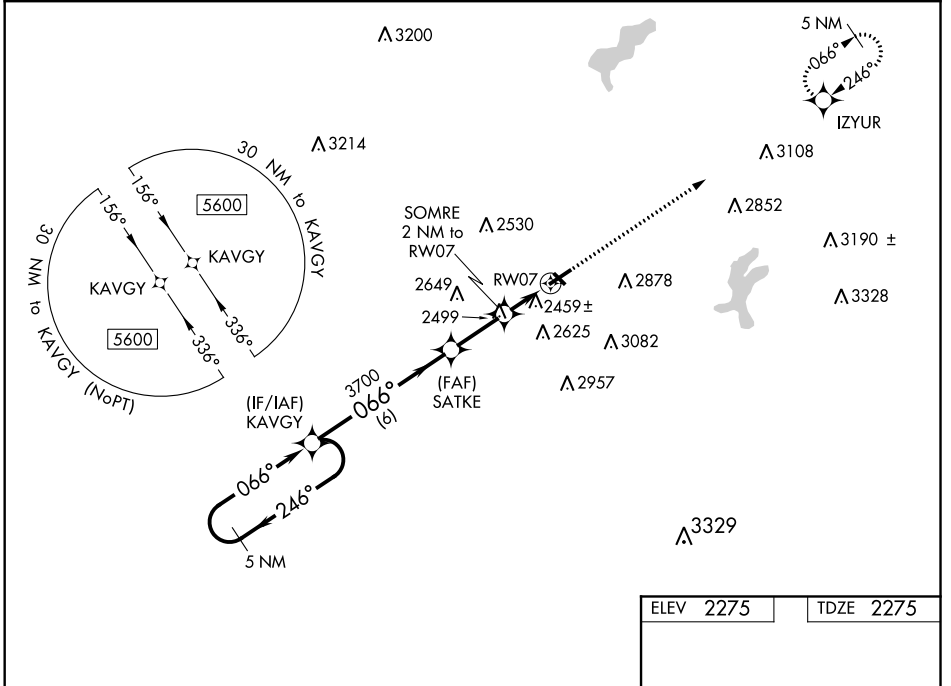
RNAV (GPS) RWY 7

SOMERSET COUNTY (2G9)

⚠ NA Baro-VNAV and VDP NA when using Johnstown altimeter setting. For uncompensated Baro-VNAV systems, LNAV/VNAV NA below -19°C (-2°F) or above 53°C (128°F). DME/DME RNP-0.3 NA. Circling Rwy 25 NA at night. Circling to Rwy 14-32 NA. When local altimeter setting not received, use Johnstown altimeter setting and increase all DA 44 feet and all MDA 60 feet. Increase LPV all Cats visibility 1/8 mile and LNAV/VNAV all Cats visibility 1/4 mile.

MISSED APPROACH:
Climb to 5200 direct IZYUR and hold.

AWOS-3P 133.8	JOHNSTOWN APP CON * 121.2 299.2	UNICOM 122.8 (CTAF) 0
-------------------------	---	---------------------------------



ELEV 2275	TDZE 2275
-----------	-----------

5200 IZYUR
*LNAV only

1.2 NM to RW07

1.08% UP

1.5% UP

5002 X 75

2727 X 150

066° to RW07

MIRL Rwy 7-25
REIL Rwy 7 and 25 0

CATEGORY	A	B	C	D
LPV DA		2525-1	250 (300-1)	
LNAV/VNAV DA		2640-1 1/8	365 (400-1 1/8)	
LNAV MDA	2720-1	445 (500-1)	2720-1 3/8	445 (500-1 1/8)
C CIRCLING	2820-1 545 (600-1)	2920-1 645 (700-1)	3460-3 1185 (1200-3)	3520-3 1245 (1300-3)

NE-4, 07 OCT 2021 to 04 NOV 2021

NE-4, 07 OCT 2021 to 04 NOV 2021