

WAAS CH 45631 W23A	APP CRS 230°	Rwy Idg TDZE Apt Elev	4099 573 584
--	------------------------	-----------------------------	---

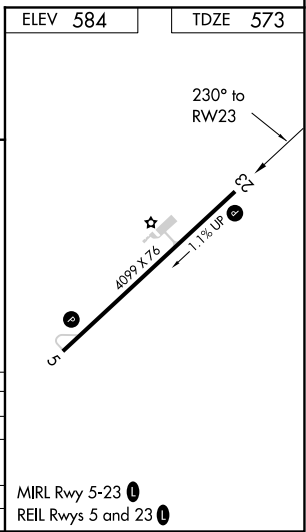
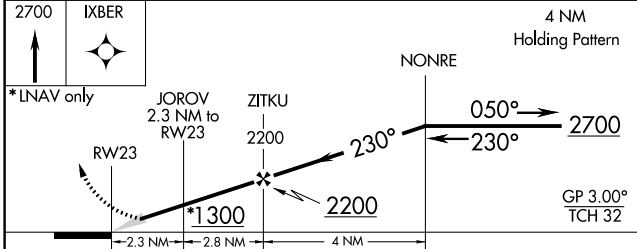
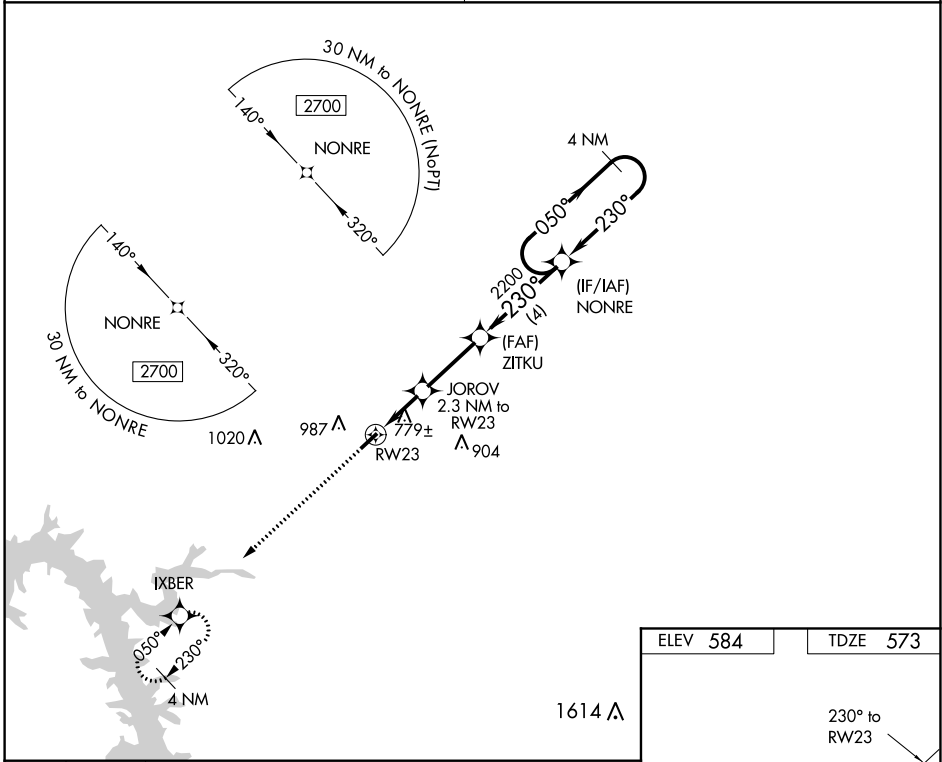
RNAV (GPS) RWY 23

PRINCETON-CALDWELL COUNTY (2M \emptyset)

▼ Baro-VNAV NA. Use Campbell AAF (Fort Campbell) altimeter setting; when not received, use Madisonville Rgnl altimeter setting and increase all DA 6 feet and all MDA 20 feet.
▲ NA DME/DME RNP-0.3 NA.

MISSED APPROACH: Climb to 2700 direct IXBER and hold.

CAMPBELL APP CON 118.1 269.525	UNICOM 122.8 (CTAF)
--	-------------------------------



CATEGORY	A	B	C	D
LPV DA	898-1 $\frac{1}{8}$	325 (400-1 $\frac{1}{8}$)		NA
RNAV/VNAV DA	1215-2 $\frac{1}{2}$	642 (700-2 $\frac{1}{2}$)		NA
RNAV MDA	1120-1	579 (600-1)		NA
CIRCLING	1420-1 $\frac{1}{4}$	836 (900-1 $\frac{1}{4}$)		NA

SE-1, 11 AUG 2022 to 08 SEP 2022

SE-1, 11 AUG 2022 to 08 SEP 2022

WAAS CH 40131 W05A	APP CRS 050°	Rwy Idg TDZE 584 Apt Elev 584	4099
--	------------------------	---	-------------

RNAV (GPS) RWY 5

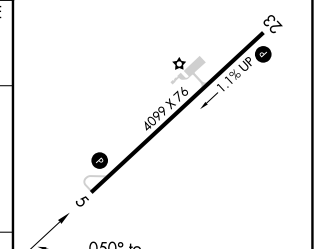
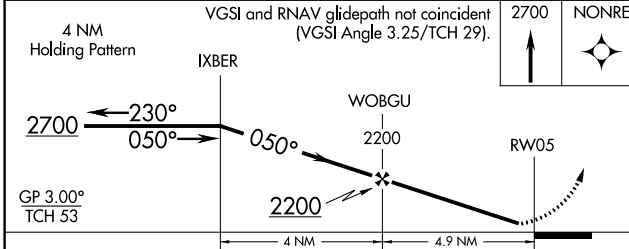
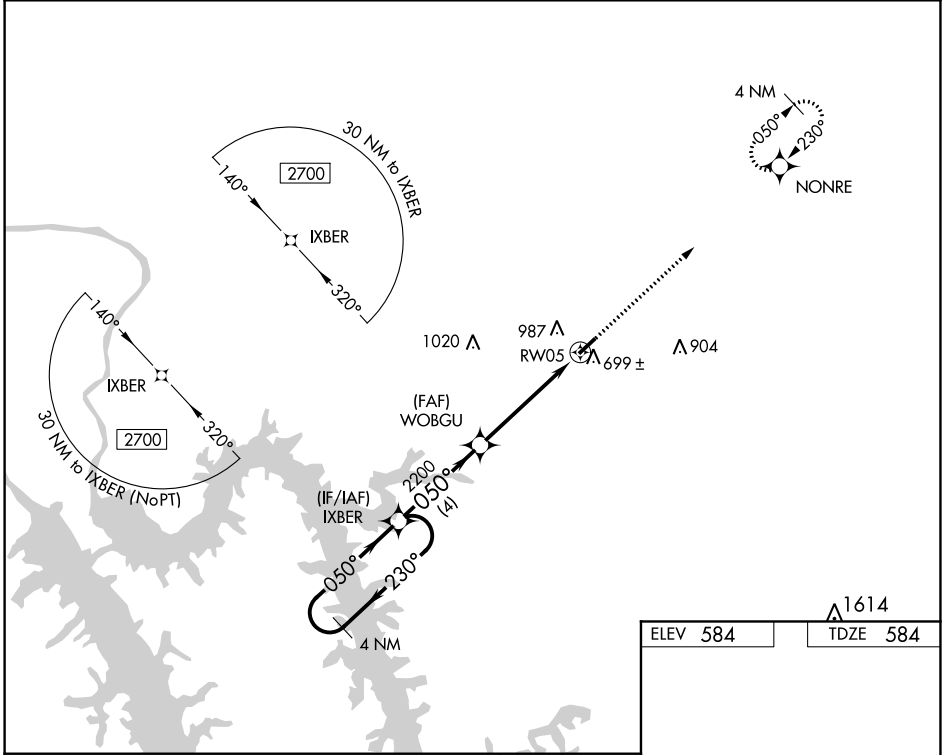
PRINCETON-CALDWELL COUNTY (2M \emptyset)

Baro-VNAV NA. Use Campbell AAF (Fort Campbell) altimeter setting; when not received, use Madisonville Rgnl altimeter setting and increase all DA 6 feet and all MDA 20 feet. Increase LPV all Cats visibility 1/8 mile. DME/DME RNP-0.3 NA. Helicopter visibility reduction below 3/4 SM NA.

MISSED APPROACH:
Climb to 2700 direct NONRE and hold.

CAMPBELL APP CON
118.1 269.525

UNICOM
122.8 (CTAF) \emptyset



CATEGORY	A	B	C	D
LPV DA	909-1	325 (400-1)		NA
LNAV/VNAV DA	936-1 1/8	352 (400-1 1/8)		NA
LNAV MDA	1040-1	456 (500-1)		NA
CIRCLING	1420-1 1/4	836 (900-1 1/4)		NA

MIRL Rwy 5-23 \emptyset
REIL Rwy 5 and 23 \emptyset

SE-1, 11 AUG 2022 to 08 SEP 2022

SE-1, 11 AUG 2022 to 08 SEP 2022