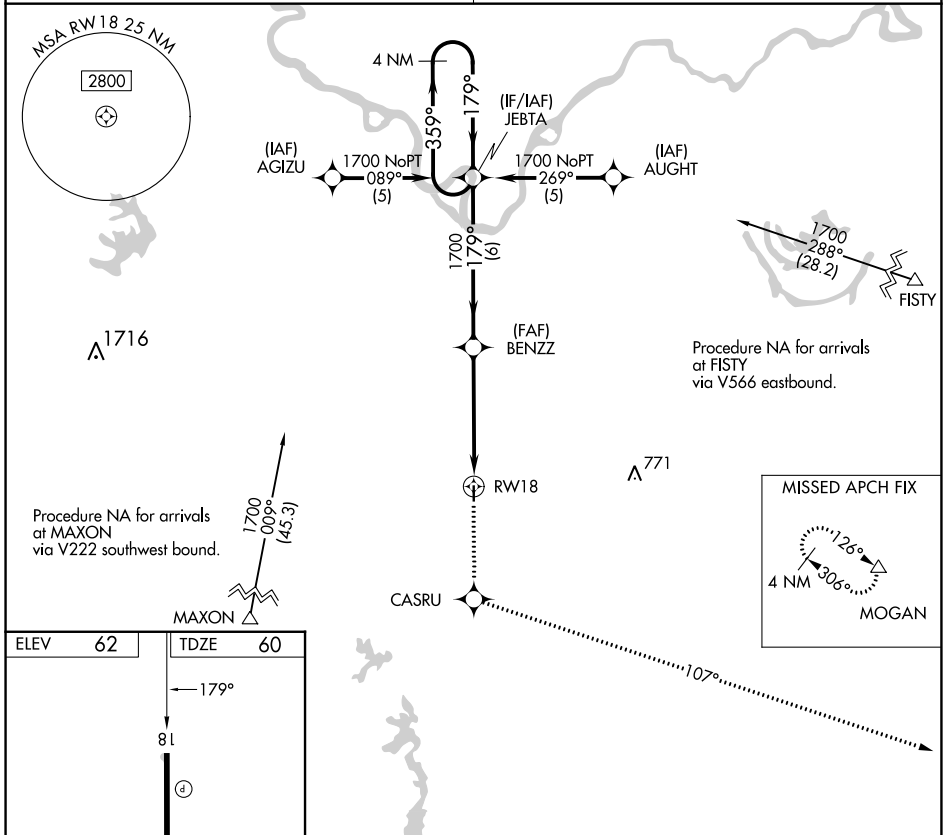


APP CRS	Rwy Idg	<b>3005</b>
<b>179°</b>	TDZE	<b>60</b>
	Apt Elev	<b>62</b>

# RNAV (GPS) RWY 18

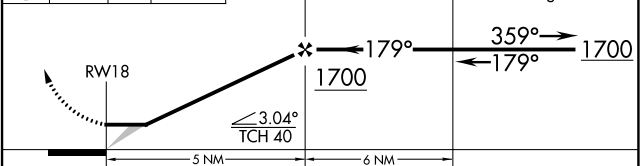
BUNKIE MUNI (2R6)

RNP APCH.	MISSED APPROACH: Climb to 2000 direct CASRU and via 107° track to MOGAN and hold.
<p>▼ Use Alexandria Intl altimeter setting; when not received, use Esler Rgnl altimeter setting.</p> <p>▲ NA</p>	
POLK APP CON <b>125.4 302.2</b>	CTAF <b>122.9</b>



ELEV 62	TDZE 60
179°	
81	
3005 X 75	
36	

2000	CASRU	107° tr	MOGAN	VGSI and descent angles not coincident (VGSI Angle 3.00/TCH 25).



REIL Rwy 18 and 36			
MIRL Rwy 18-36			
CATEGORY	A	B	C D
LNAV MDA	600-1	540 (600-1)	NA

SC-4, 22 FEB 2024 to 21 MAR 2024

SC-4, 22 FEB 2024 to 21 MAR 2024