

(GABOO.GABOO1) 20198

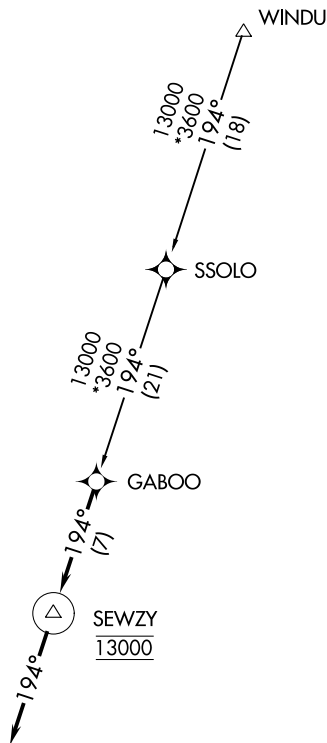
# GABOO ONE ARRIVAL (RNAV)

AL-502 (FAA)

AUSTIN, TEXAS

AUSTIN APP CON  
127.225 317.65  
HYI ATIS ★  
120.825  
T74 AWOS-3PT  
119.75

- NOTE: RADAR required.
- NOTE: RNAV 1.
- NOTE: DME/DME/IRU or GPS required.
- NOTE: Turbojet and turboprop aircraft only.



NOTE: Chart not to scale.

## ARRIVAL ROUTE DESCRIPTION

SSOLO TRANSITION (SSOLO.GABOO1)

WINDU TRANSITION (WINDU.GABOO1)

LANDING ALL AIRPORTS: From GABOO on track 194° to cross SEWZY at 13000, then on track 194°. Expect RADAR vectors to final approach course.

# GABOO ONE ARRIVAL (RNAV)

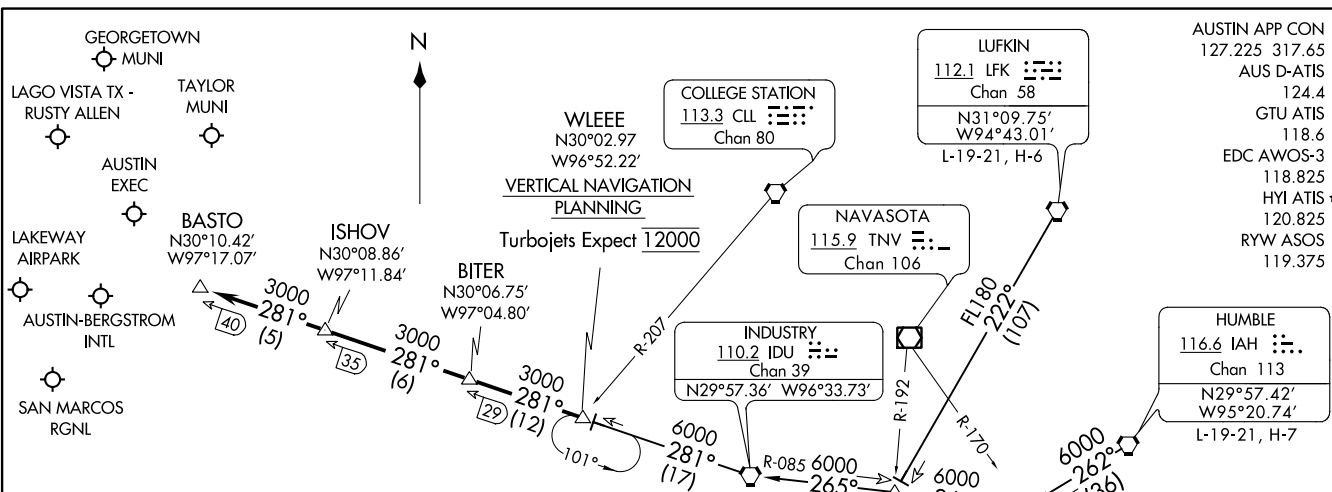
(GABOO.GABOO1) 16JUL20

AUSTIN, TEXAS

SC-3, 04 NOV 2021 to 02 DEC 2021

SC-3, 04 NOV 2021 to 02 DEC 2021

BITER NINE ARRIVAL  
(WLEEE.BITER9) 25APR19



- AUSTIN APP CON 127.225 317.65
- AUS D-ATIS 124.4
- GTU ATIS 118.6
- EDC AWOS-3 118.825
- HYI ATIS ★ 120.825
- RYW ASOS 119.375

**ARRIVAL ROUTE DESCRIPTION**

**HUMBLE TRANSITION (IAH.BITER9):** From over IAH VORTAC on IAH R-262 to SHYNR INT, then on IDU R-085 to IDU VORTAC, then on IDU R-281 to WLEEE INT. Thence . . . .

**INDUSTRY TRANSITION (IDU.BITER9):** From over IDU VORTAC on IDU R-281 to WLEEE INT. Thence . . . .

**LUFKIN TRANSITION (LFK.BITER9):** From over LFK VORTAC on LFK R-222 to BOCK INT, then on IDU R-085 to IDU VORTAC, then on IDU R-281 to WLEEE INT. Thence . . . .

. . . . From over WLEEE on IDU R-281 to BITER, then on IDU R-281 to ISHOV, then on IDU R-281 to BASTO. Expect vectors to final approach course at or prior to BASTO.

- NOTE: RADAR required.
- NOTE: DME required.
- NOTE: DME/DME/IRU or GPS equipped aircraft must file the WLEEE (RNAV) or POTRR (RNAV) STAR.

NOTE: Chart not to scale.

(WLEEE.BITER9) 21168  
BITER NINE ARRIVAL

AL-556 (FAA)

AUSTIN, TEXAS

AUSTIN, TEXAS

# BLEWE FOUR ARRIVAL

AUSTIN, TEXAS

AUSTIN APP CON  
 127.225 317.65  
 AUS D-ATIS  
 124.4  
 EDC AWOS-3  
 118.825  
 HYI ATIS ★  
 120.825  
 RYW ASOS  
 119.375

WACO  
 115.3 ACT   
 Chan 100  
 N31°39.74'-W97°16.14'  
 L-19, H-6

MAVERICK  
 113.1 TTT   
 Chan 78  
 L-17, H-6

WINDU  
 N31°31.83'  
 W97°04.95'  
 L-19, H-6-7

GOOCH SPRINGS  
 112.5 AGJ   
 Chan 72  
 L-19, H-6

BLEWE  
 N31°12.46'  
 W97°12.54'

SEWZY  
 N30°48.80'  
 W97°21.74'  
 VERTICAL NAVIGATION  
 PLANNING  
 Expect 13000

LAGO VISTA TX -  
 RUSTY ALLEN

TAYLOR  
 MUNI

AUSTIN  
 EXEC

LAKEWAY  
 AIRPARK

AUSTIN-BERGSTROM  
 INTL

SAN MARCOS MUNI

CENTEX  
 112.8 CWK   
 Chan 75  
 N30°22.71'-W97°31.79'  
 L-19-21, H-6

- NOTE: RADAR required.
- NOTE: DME required.
- NOTE: DME/DME/IRU or GPS equipped turbojet and turboprop aircraft must file the SEWZY (RNAV) or MSTLO (RNAV) STAR.

NOTE: Chart not to scale.

## ARRIVAL ROUTE DESCRIPTION

WACO TRANSITION (ACT.BLEWE4): From over ACT VORTAC on ACT R-165 to BLEWE INT. Thence . . .

WINDU TRANSITION (WINDU.BLEWE4): From over WINDU INT on CWK R-012 to BLEWE INT. Thence . . .

. . . From over BLEWE on CWK R-012 to SEWZY, then on CWK R-012 to CWK VORTAC. Expect vectors to final approach course at or prior to CWK VORTAC.

SC-3, 04 NOV 2021 to 02 DEC 2021

SC-3, 04 NOV 2021 to 02 DEC 2021


# BLEWE FOUR ARRIVAL


AUSTIN, TEXAS

# KALLA FOUR ARRIVAL

AUSTIN, TEXAS

AUSTIN APP CON  
119.0 370.85  
AUS D-ATIS  
124.4

GOOCH SPRINGS  
112.5 AGJ   
Chan 72

LLANO  
108.2 LLO   
Chan 19  
N30°47.78'-W98°47.24'  
L-19, H-6

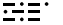
4100  
089°  
(37)

KALLA  
N30°43.26'  
W98°04.64'  
10000

GEORGETOWN  
MUNI 

120°  
(35)

LAKEWAY  
AIRPARK 

Ldg KAUS, KGTU, K3R9  
CENTEX  
112.8 CWK   
Chan 75  
N30°22.71'-W97°31.79'

10000

AUSTIN-BERGSTROM INTL 

NOTE: RADAR required.  
NOTE: DME/DME/IRU or GPS equipped turbojet  
and turboprop aircraft landing KAUS must  
file the LAIKS (RNAV) STAR.

NOTE: Chart not to scale.

## ARRIVAL ROUTE DESCRIPTION

LLANO TRANSITION (LLO.KALLA4): From over LLO VORTAC on LLO R-089  
to KALLA. Thence . . . .

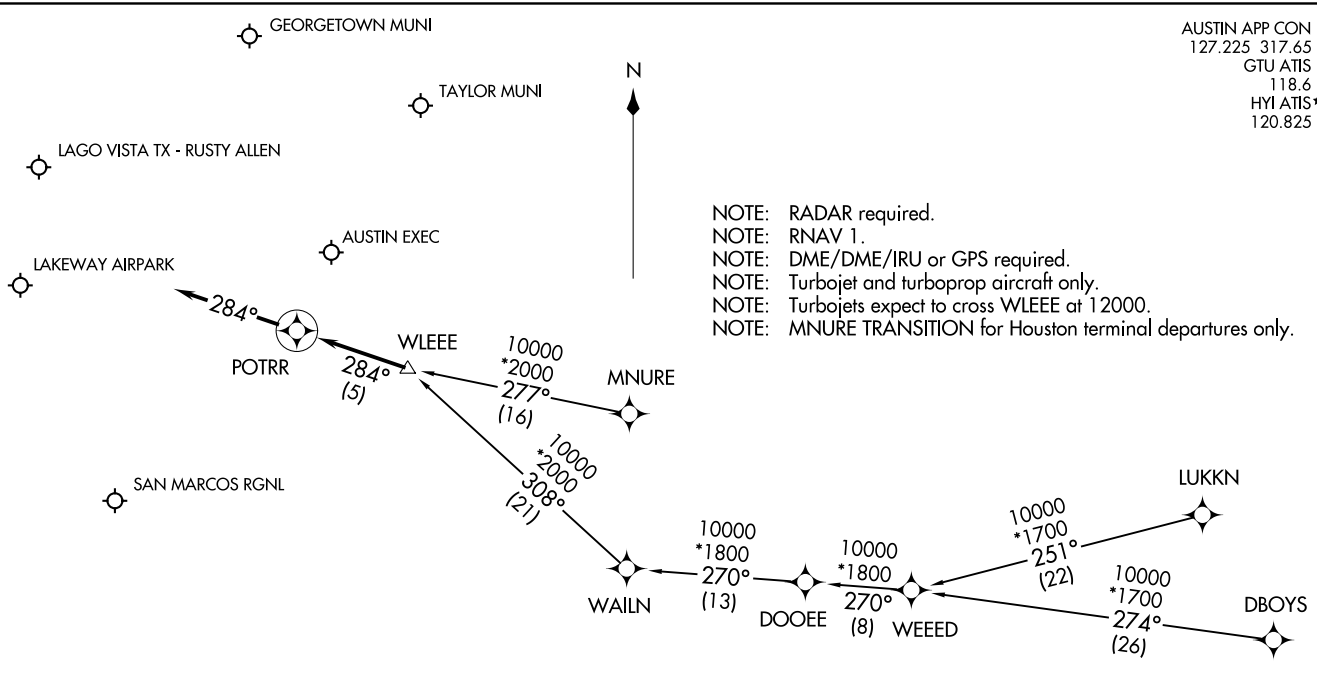
. . . . from over KALLA on CWK R-300 to cross CWK VORTAC at 10000.  
Expect vectors to final approach course.

SC-3, 04 NOV 2021 to 02 DEC 2021

SC-3, 04 NOV 2021 to 02 DEC 2021

AUSTIN APP CON  
 127.225 317.65  
 GTU ATIS  
 118.6  
 HYI ATIS★  
 120.825

- NOTE: RADAR required.
- NOTE: RNAV 1.
- NOTE: DME/DME/IRU or GPS required.
- NOTE: Turbojet and turboprop aircraft only.
- NOTE: Turbojets expect to cross WLEEE at 12000.
- NOTE: MNURE TRANSITION for Houston terminal departures only.



ARRIVAL ROUTE DESCRIPTION

- DBOYS TRANSITION (DBOYS.POTRR1)
- LUKKN TRANSITION (LUKKN.POTRR1)
- MNURE TRANSITION (MNURE.POTRR1)
- WEEED TRANSITION (WEEED.POTRR1)

LANDING ALL AIRPORTS: From WLEEE on track 284° to POTRR, then on track 284°. Expect RADAR vectors to final approach course.

POTRR ONE ARRIVAL (RNAV)  
 (WLEEE.POTRR1) 07DEC17

AUSTIN, TEXAS

(WLEEE.POTRR1) 21168  
 POTRR ONE ARRIVAL (RNAV)

AL-5891 (FAA)

AUSTIN, TEXAS