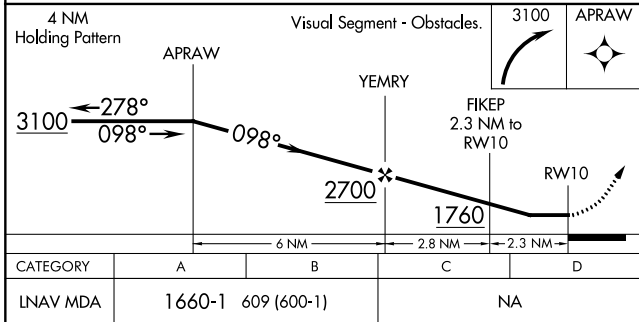
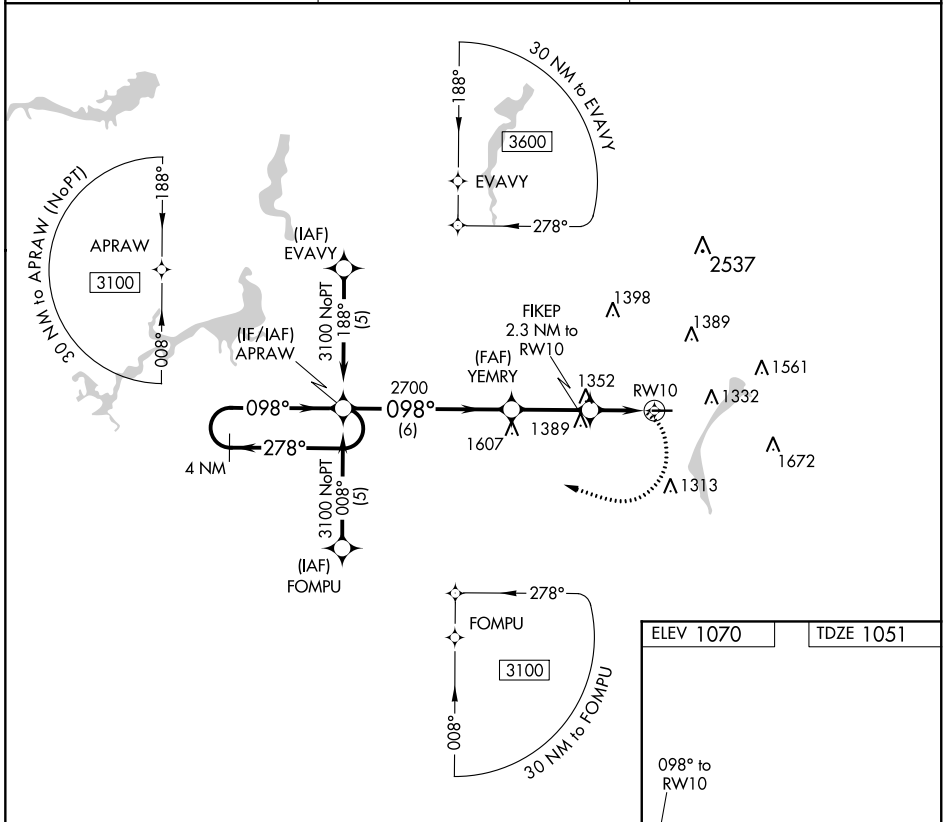


APP CRS	Rwy Idg	3664
098°	TDZE	1051
	Apt Elev	1070

RNAV (GPS) RWY 10

YOUNGSTOWN ELSER METRO (4G4)

RNP APCH.		MISSED APPROACH: Climbing right turn to 3100 direct APRAW and hold.	
<p>▽ Rwy 10 helicopter visibility reduction below 1 SM NA. Obtain local altimeter setting on CTAF; when not received, use New Castle altimeter setting and increase all MDA 40 feet. Procedure NA at night.</p> <p>▲ NA</p>	CLEVELAND APP CON *	CLNC DEL	UNICOM
	125.5 371.875	119.25	123.05 (CTAF)



ELEV 1070	TDZE 1051
-----------	-----------

CATEGORY	A	B	C	D	MIRL Rwy 10-28 REIL Rwy 10 and 28
LNAV MDA	1660-1	609 (600-1)	NA	NA	

EC-2, 04 NOV 2021 to 02 DEC 2021

EC-2, 04 NOV 2021 to 02 DEC 2021

APP CRS **279°**
 Rwy Idg **3753**
 TDZE **1063**
 Apt Elev **1070**

RNAV (GPS) RWY 28
 YOUNGSTOWN ELSER METRO (4G4)

RNP APCH.

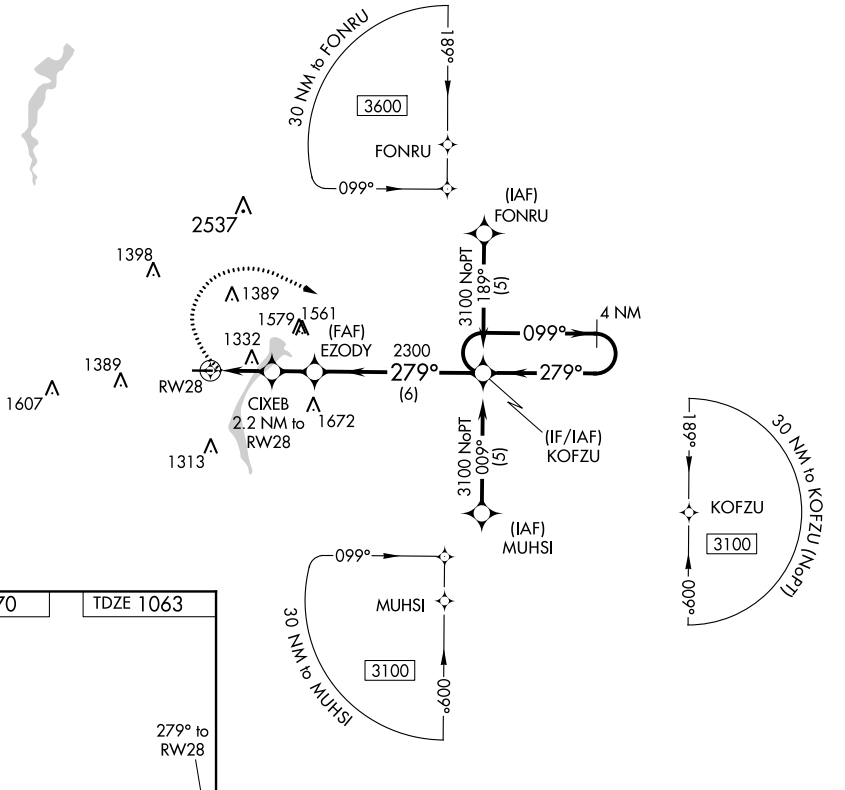
NA Rwy 28 helicopter visibility reduction below 1 SM NA. Obtain local altimeter setting on CTAF; when not received, use New Castle altimeter setting and increase all MDA 40 feet. Procedure NA at night.

MISSED APPROACH: Climbing right turn to 3100 direct KOFZU and hold.

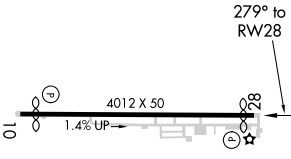
CLEVELAND APP CON*
125.5 371.875

CLNC DEL
119.25

UNICOM
123.05 (CTAF)



ELEV 1070 TDZE 1063



3100	KOFZU	Visual Segment - Obstacles.	4 NM
			Holding Pattern
		EZODY	
		KOFZU	
		099° →	3100
		← 279°	
		2300	
		1800	
		← 2.2 NM	1.5 NM
		6 NM	
CATEGORY	A	B	C
LNAV MDA	1600-1	537 (600-1)	NA

MIRL Rwy 10-28
 REIL Rwy 10 and 28

EC-2, 04 NOV 2021 to 02 DEC 2021

EC-2, 04 NOV 2021 to 02 DEC 2021

VOR/DME ACO 114.4 Chan 91	APP CRS 114°	Rwy ldg TDZE Apt Elev N/A 1070
---	------------------------	---

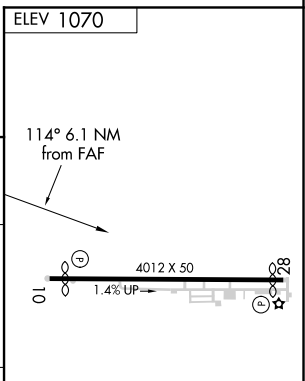
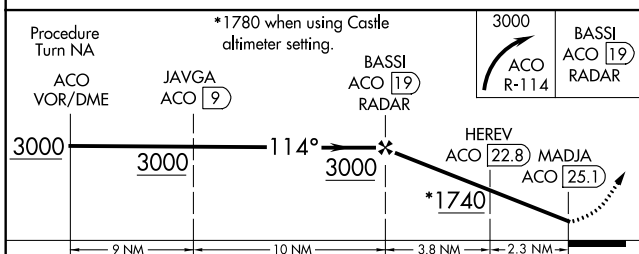
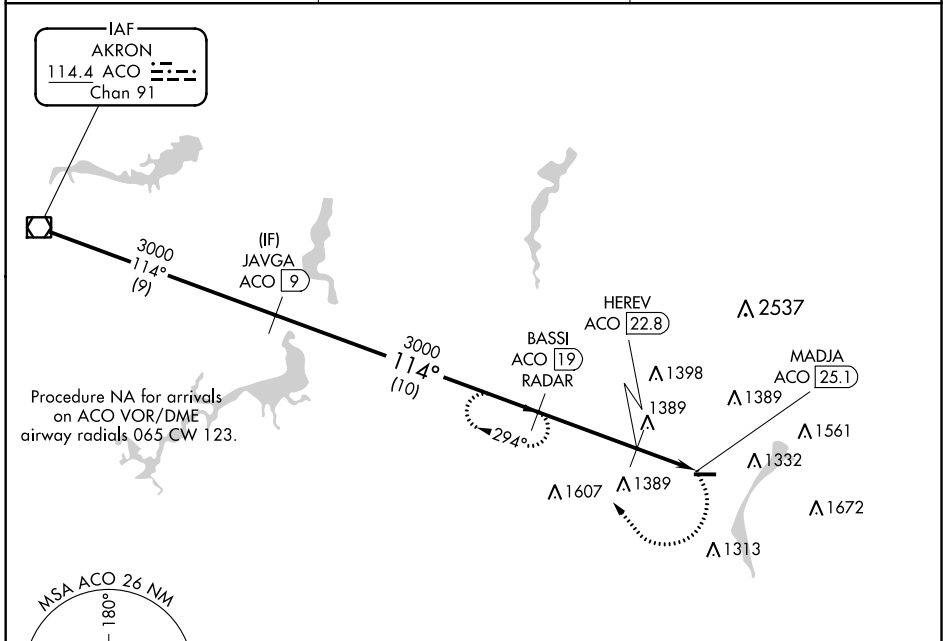
VOR-C
YOUNGSTOWN ELSETER METRO (4G4)

DME or RADAR required.

NA Obtain local altimeter setting on CTA; when not received, use New Castle altimeter setting and increase all MDA 40 feet. Procedure NA at night.

MISSED APPROACH: Climbing right turn to 3000 via ACO VOR/DME R-114 to BASSI/ACO 19 DME/RADAR and hold.

CLEVELAND APP CON ★ 125.5 371.875	CLNC DEL 119.25	UNICOM 123.05 (CTAF)
---	---------------------------	--------------------------------



CATEGORY	A	B	C	D													
C CIRCLING	1740-1 670 (700-1)	1740-1¼ 670 (700-1¼)	NA	NA	MIRL Rwy 10-28 REIL Rwys 10 and 28												
HEREV FIX MINIMUMS					FAF to MAP 6.1 NM												
C CIRCLING	1660-1	590 (600-1)	NA	NA	<table border="1"> <tr> <td>Knots</td> <td>60</td> <td>90</td> <td>120</td> <td>150</td> <td>180</td> </tr> <tr> <td>Min:Sec</td> <td>6:06</td> <td>4:04</td> <td>3:03</td> <td>2:26</td> <td>2:02</td> </tr> </table>	Knots	60	90	120	150	180	Min:Sec	6:06	4:04	3:03	2:26	2:02
Knots	60	90	120	150	180												
Min:Sec	6:06	4:04	3:03	2:26	2:02												

EC-2, 04 NOV 2021 to 02 DEC 2021

EC-2, 04 NOV 2021 to 02 DEC 2021