

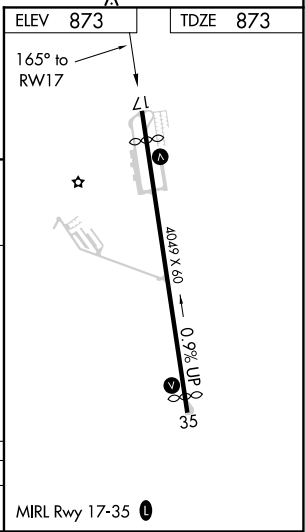
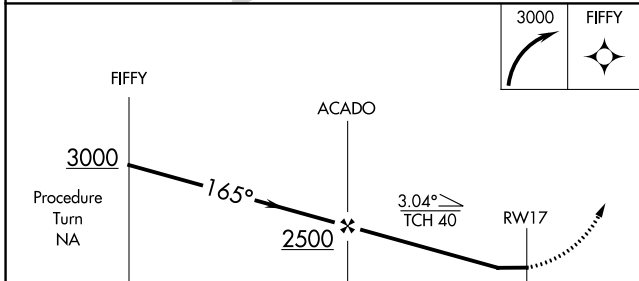
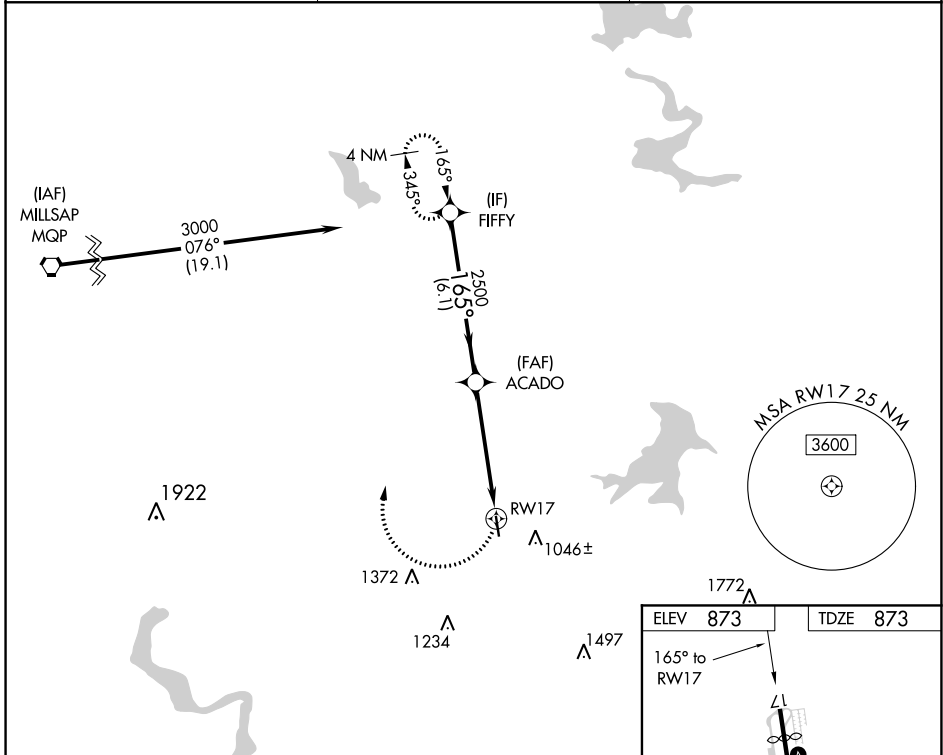
APP CRS	Rwy Idg	<b>3657</b>
<b>165°</b>	TDZE	<b>873</b>
	Apt Elev	<b>873</b>

# RNAV (GPS) RWY 17

BOURLAND FLD (50F)

RNP APCH.	Rwy 17 helicopter visibility reduction below 1 SM NA. Use Cleburne altimeter setting, when not received, use Fort Worth Meacham Intl altimeter setting and increase all MDA 40 feet, increase LNAV Cat C visibility 1/2 SM. Procedure NA at night.	MISSED APPROACH: Climbing right turn to 3000 direct FIFFY and hold.
⚠ NA		

CPT AWOS-3 <b>119.525</b>	REGIONAL APP CON <b>135.975 379.9</b>	UNICOM <b>123.0 (CTAF) 0</b>
------------------------------	--	---------------------------------



CATEGORY	A	B	C	D
LNAV MDA	1520-1	647 (700-1)	1520-1 <sup>3</sup> / <sub>4</sub> 647 (700-1 <sup>3</sup> / <sub>4</sub> )	NA

SC-2, 09 SEP 2021 to 07 OCT 2021

SC-2, 09 SEP 2021 to 07 OCT 2021

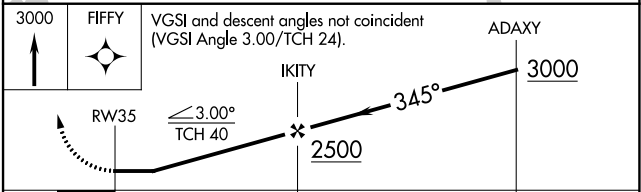
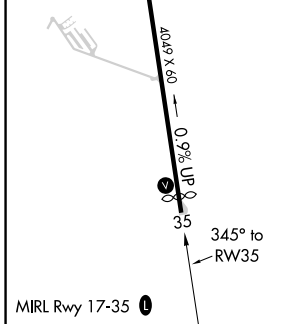
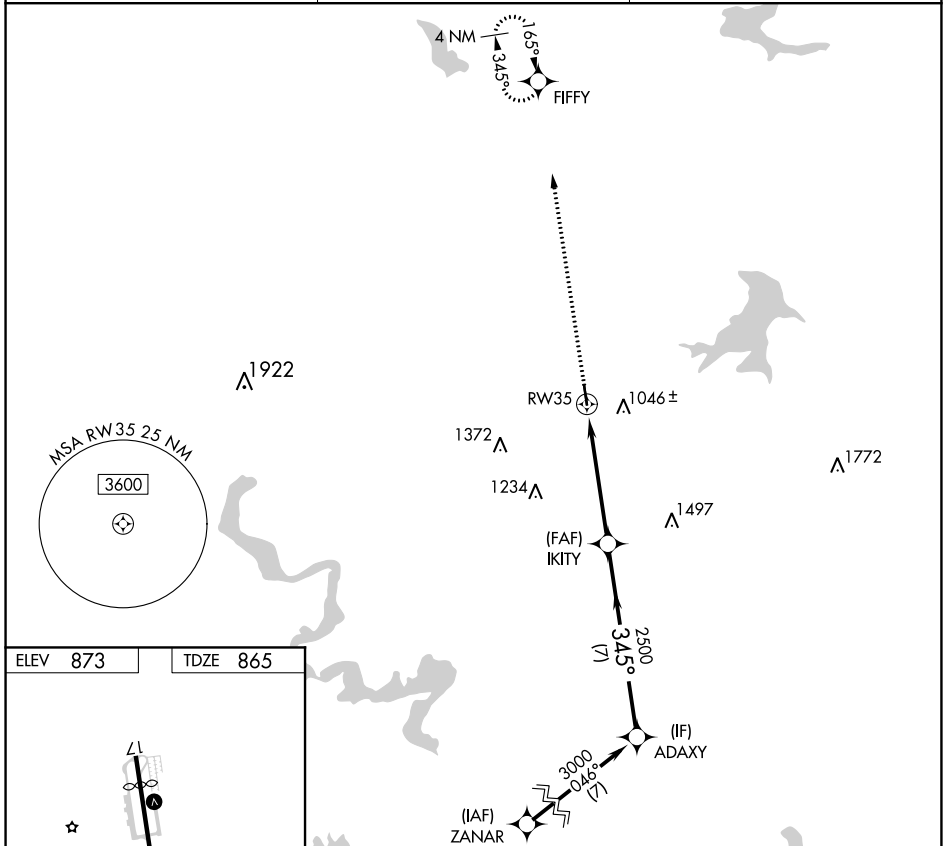
APP CRS <b>345°</b>	Rwy Idg <b>3834</b>
	TDZE <b>865</b>
	Apt Elev <b>873</b>

# RNAV (GPS) RWY 35

BOURLAND FLD (50F)

RNP APCH.	MISSED APPROACH: Climb to 3000 direct FIFFY and hold.
Rwy 35 helicopter visibility reduction below 1 SM NA.	
NA Procedure NA at night.	

CPT AWOS-3 <b>119.525</b>	REGIONAL APP CON <b>135.975 379.9</b>	UNICOM <b>123.0 (CTAF)</b>
------------------------------	--	-------------------------------



CATEGORY	A	B	C	D
LNAV MDA	1560-1	695 (700-1)	1560-2 695 (700-2)	NA
CIRCLING	1580-1	707 (800-1)	1680-2¼ 807 (900-2¼)	NA

SC-2, 09 SEP 2021 to 07 OCT 2021

SC-2, 09 SEP 2021 to 07 OCT 2021