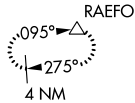
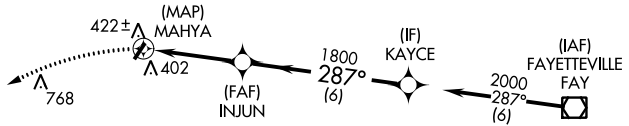


APP CRS	Rwy Idg	N/A
287°	TDZE	N/A
	Apt Elev	304

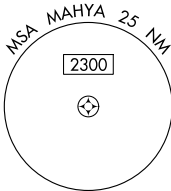
# RNAV (GPS)-A

P K AIRPARK (5W4)

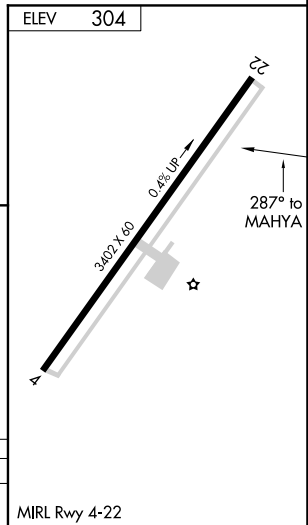
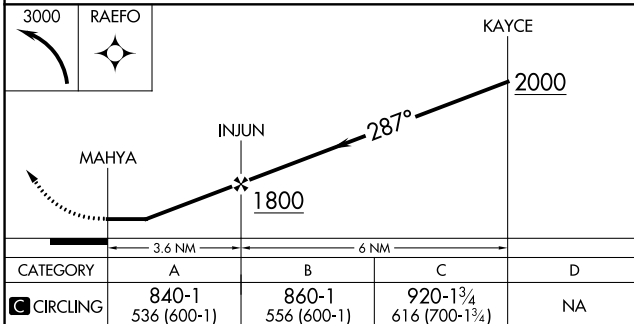
<p>NA</p>	<p>DME/DME RNP-0.3 NA. Procedure NA at night. Use Fayetteville altimeter setting.</p>	<p>MISSED APPROACH: Climbing left turn to 3000 direct RAEFO and hold.</p>
<p>FAYETTEVILLE APP CON <b>127.8 290.25</b></p>		<p>UNICOM <b>123.0 (CTAF)</b></p>



Procedure NA for arrival on FAY VOR/DME airway radials 225 CW 009.



1249 A



MIRL Rwy 4-22

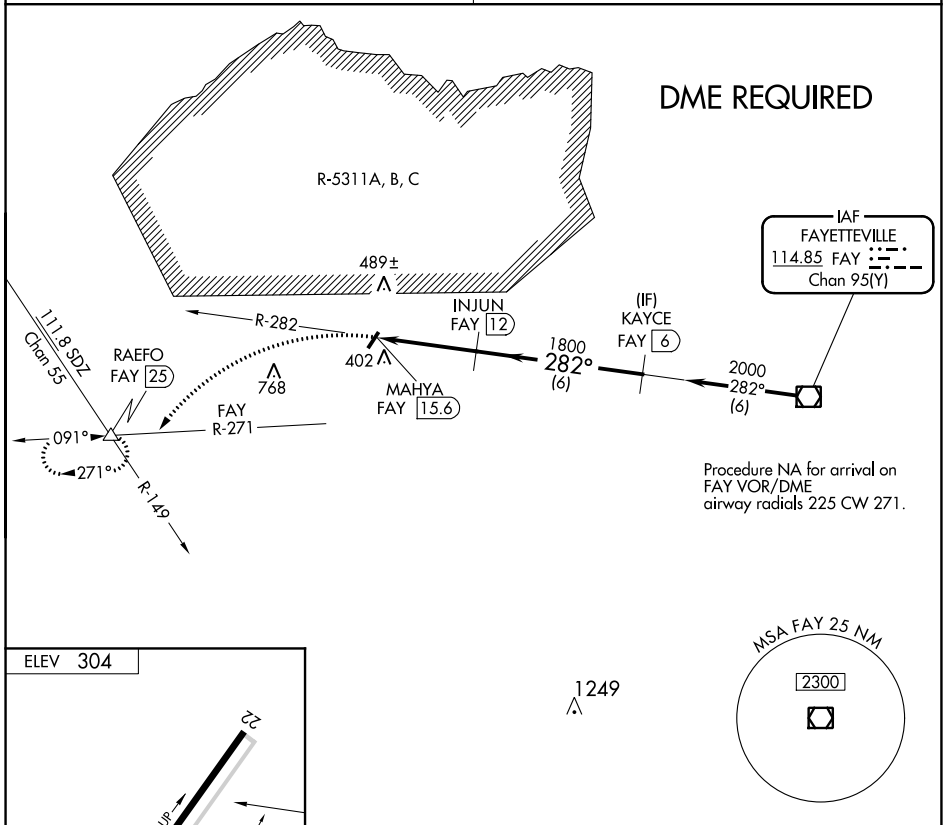
SE-2, 19 MAY 2022 to 16 JUN 2022

SE-2, 19 MAY 2022 to 16 JUN 2022

VOR/DME <b>FAY</b> <b>114.85</b> Chan <b>95(Y)</b>	APP CRS <b>282°</b>	Rwy Idg TDZE Apt Elev <b>N/A</b> <b>N/A</b> <b>304</b>
--	------------------------	---

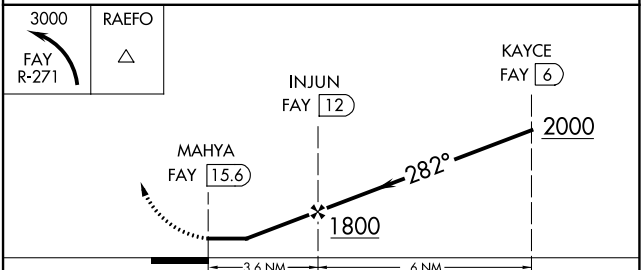
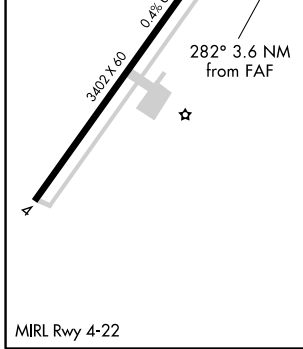
**VOR-A**  
P K AIRPARK (5W4)

<p><b>▼</b> DME required. Procedure NA at night. <b>▲</b> NA Use Fayetteville altimeter setting.</p>	<p>MISSED APPROACH: Climbing left turn to 3000 on FAY VOR/DME R-271 to RAEFO/FAY 25 DME and hold.</p>
<p>FAYETTEVILLE APP CON <b>127.8 290.25</b></p>	<p>UNICOM <b>123.0 (CTAF)</b></p>



SE-2, 19 MAY 2022 to 16 JUN 2022

SE-2, 19 MAY 2022 to 16 JUN 2022



CATEGORY	A	B	C	D
<b>☑</b> CIRCLING	840-1 536 (600-1)	860-1 556 (600-1)	920-1 <sup>3</sup> / <sub>4</sub> 616 (700-1 <sup>3</sup> / <sub>4</sub> )	NA