

APP CRS	Rwy ldg	5005
168°	TDZE	389
	Apt Elev	389

RNAV (GPS) RWY 17

TURNER COUNTY (75J)

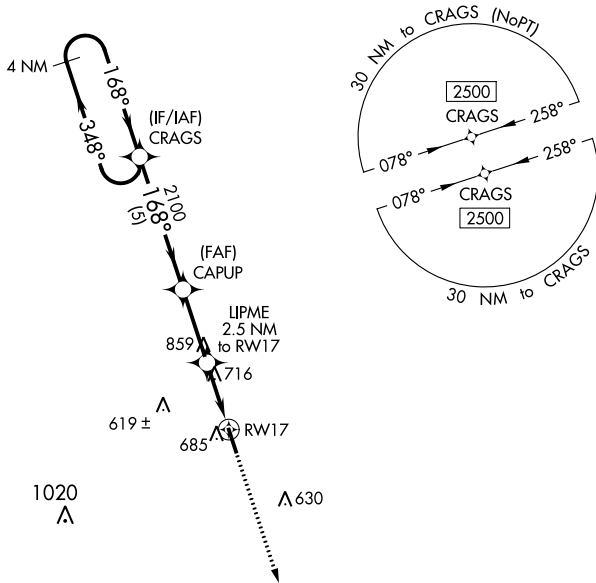
▽ Rwy 17 helicopter visibility reduction below 1 SM NA.
▲ NA DME/DME RNP-0.3 NA.
 When Fitzgerald altimeter setting not received, procedure NA.
 Procedure NA at night.

MISSED APPROACH: Climb to 2500
 direct SEISE and hold.

FZW AWOS-3
118.625

JACKSONVILLE CENTER
125.75 363.075

UNICOM
122.7 (CTAF)



ELEV	389	TDZE	389
------	------------	------	------------

4 NM Holding Pattern	Visual Segment - Obstacles.	2500	SEISE
2500 ← 348°	CRAGS	↑	★
168° →	CAPUP		
	LIPME 2.5 NM to RW17		
	RW17		
	2100		
	1220		
	5 NM	2.8 NM	2.5 NM

CATEGORY	A	B	C	D
LNAV MDA	1080-1	691 (700-1)	1080-2	691 (700-2)
C CIRCLING	1100-1	711 (800-1)	1140-2 ³ / ₄ 751 (800-2 ¹ / ₄)	1260-2 ³ / ₄ 871 (900-2 ³ / ₄)

MIRL Rwy 17-35

SE-4, 22 FEB 2024 to 21 MAR 2024

SE-4, 22 FEB 2024 to 21 MAR 2024

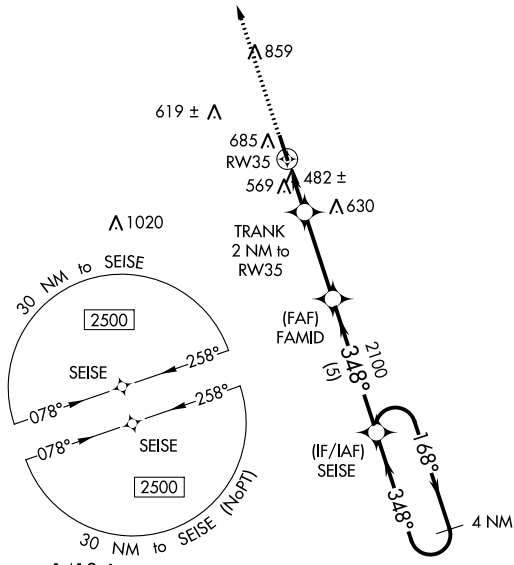
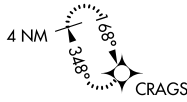
WAAS CH 82040 W35A	APP CRS 348°	Rwy Idg TDZE Apt Elev	5005 388 389
--	------------------------	-----------------------------	---

RNAV (GPS) RWY 35

TURNER COUNTY (75J)

<p>▼ When Fitzgerald altimeter setting not received, procedure NA. ▲ NA Rwy 35 helicopter visibility reduction below 1 SM NA. DME/DME RNP-0.3 NA. Procedure NA at night.</p>	MISSED APPROACH: Climb to 2500 direct CRAGS and hold.
--	---

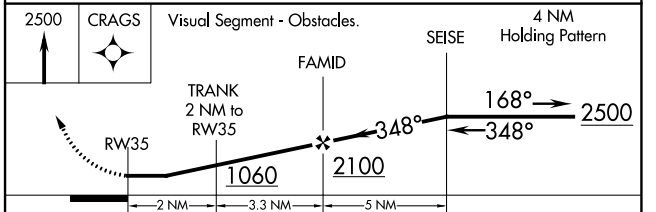
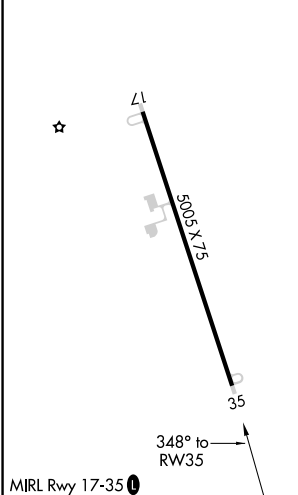
FZG AWOS-3 118.625	JACKSONVILLE CENTER 125.75 363.075	UNICOM 122.7 (CTAF) 0
------------------------------	--	---------------------------------



SE-4, 22 FEB 2024 to 21 MAR 2024

SE-4, 22 FEB 2024 to 21 MAR 2024

ELEV 389	TDZE 388
----------	----------



CATEGORY	A	B	C	D
LP MDA	780-1	392 (400-1)	780-1 $\frac{1}{8}$	392 (400-1 $\frac{1}{8}$)
LNAV MDA	880-1	492 (500-1)	880-1 $\frac{3}{8}$	492 (500-1 $\frac{3}{8}$)
C CIRCLING	1100-1	711 (800-1)	1140-2 $\frac{1}{4}$ 751 (800-2 $\frac{1}{4}$)	1260-2 $\frac{3}{4}$ 871 (900-2 $\frac{3}{4}$)