

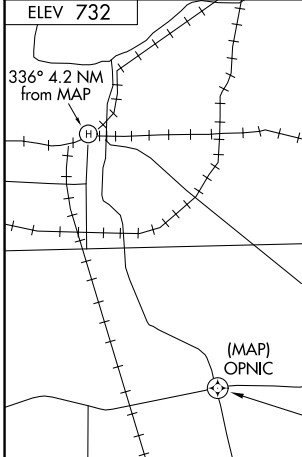
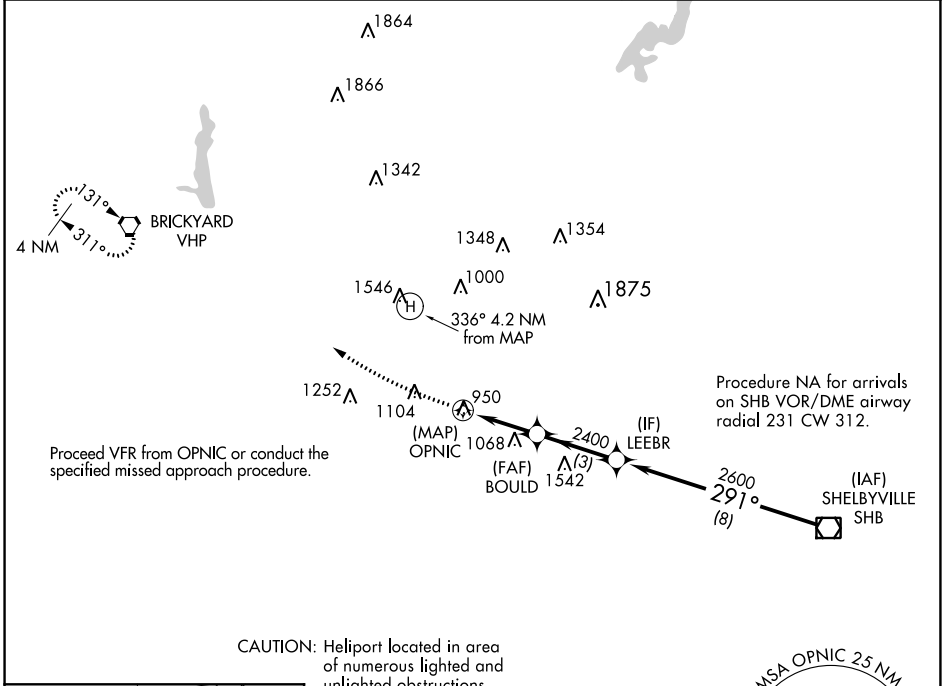
APP CRS 291°	Rwy Idg Surf Elev Apt Elev	N/A 824 732
------------------------	----------------------------------	--

COPTER RNAV (GPS) 291°

INDIANAPOLIS DOWNTOWN (8A4)

RNP APCH - GPS	<p>NA Limit final and missed approach to 70 KIAS. When local altimeter setting not received, use Indianapolis Intl altimeter setting and increase MDA 40 feet. Activate High Intensity Pad Lights-CTAF.</p>	<p>MISSED APPROACH: Climb to 1500 then climbing right turn to 3000 direct VHP VORTAC and hold.</p>
----------------	--	--

AWOS-3 135.525	INDIANAPOLIS APP CON 125.275 317.8	UNICOM 123.05 (CTAF) 0
--------------------------	--	----------------------------------



1500	3000	VHP	LEEBR	SHB VOR/DME
↑	↷			
Proceed VFR from MAP		OPNIC	BOULD	LEEBR
		2400	291°	291°
		2.8 NM	3 NM	8 NM
CATEGORY	COPTER			
LNAV MDA	1340-3/4 516 (600-3/4)			

EC-2, 22 FEB 2024 to 21 MAR 2024

EC-2, 22 FEB 2024 to 21 MAR 2024

VOR/DME SHB 116.15 Chan 108 (Y)	APP CRS 287°	Rwy Idg Surf Elev Apt Elev	N/A 824 732
---	------------------------	----------------------------------	--

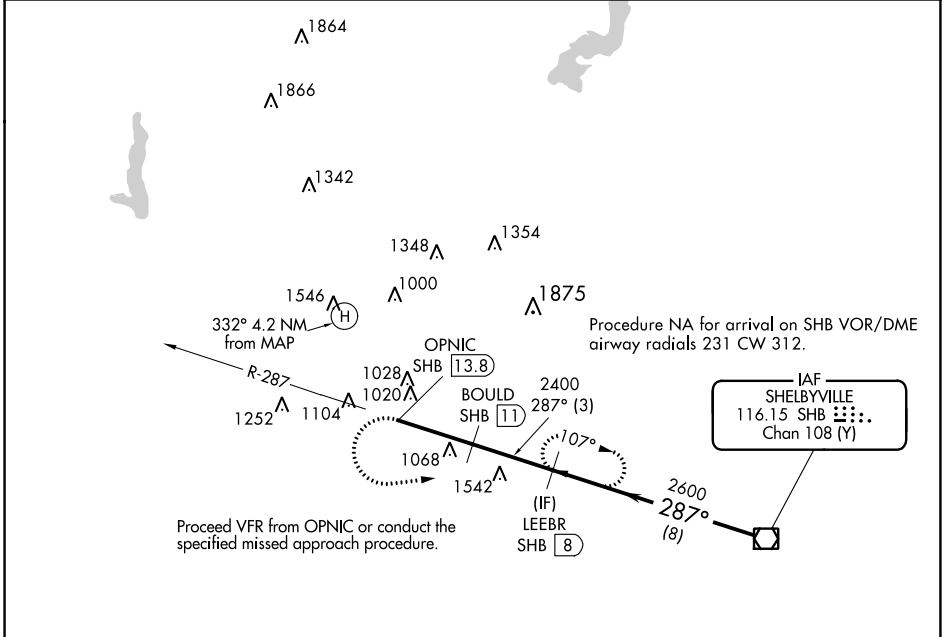
COPTER VOR/DME 287°

INDIANAPOLIS DOWNTOWN (8A.4)

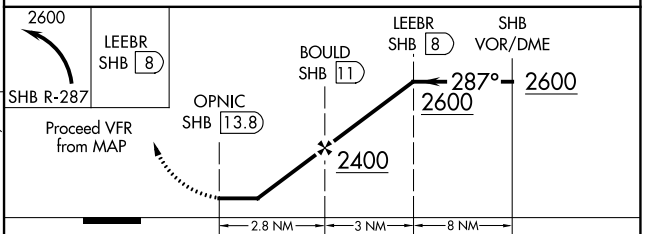
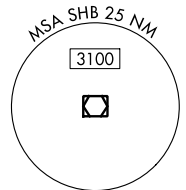
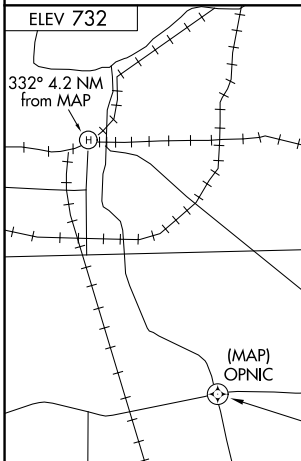
▲ NA When local altimeter setting not received, use Indianapolis Intl altimeter setting and increase MDA 40 feet. Activate High Intensity Pad Lights-CTAF.

MISSED APPROACH: Climbing left turn to 2600 via SHB R-287 to LEEBR/SHB 8 DME and hold.

AWOS-3 135.525	INDIANAPOLIS APP CON 125.275 317.8	UNICOM 123.05 (CTAF) 0
--------------------------	--	----------------------------------



CAUTION: Heliport located in area of numerous lighted and unlighted obstructions.



CATEGORY	COPTER
H-287°	1340-¾ 516 (600-¾)

EC-2, 22 FEB 2024 to 21 MAR 2024

EC-2, 22 FEB 2024 to 21 MAR 2024