

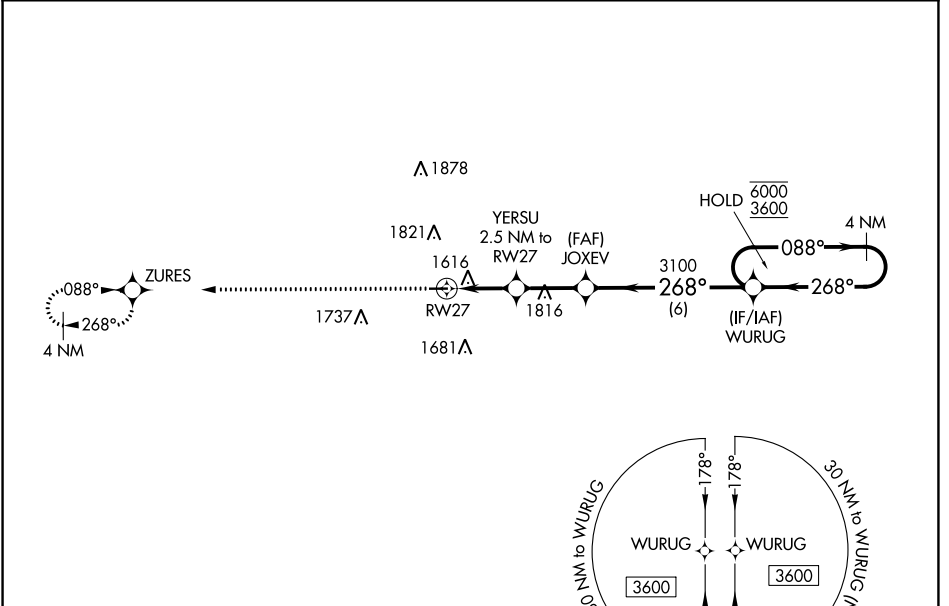
WAAS CH <b>50331</b> <b>W27A</b>	APP CRS <b>268°</b>	Rwy Idg TDZE Apt Elev	<b>3599</b> <b>1483</b> <b>1483</b>
--	------------------------	-----------------------------	---

# RNAV (GPS) RWY 27

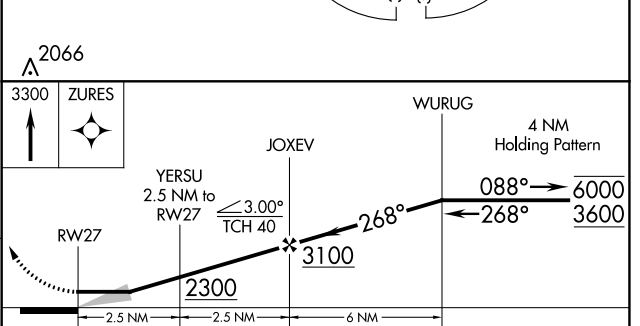
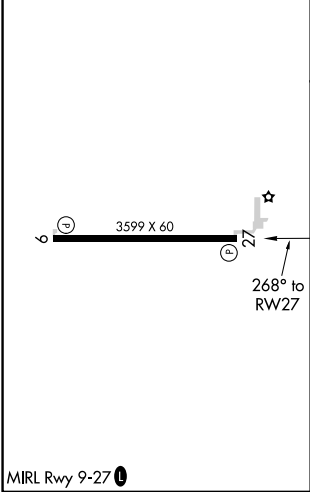
CASSVILLE MUNI (94K)

RNP APCH - GPS.	MISSED APPROACH: Climb to 3300 direct ZURES and hold.
<p><b>▽</b> Procedure NA at night. Use Monett altimeter setting, when not received, use Rogers altimeter setting and increase all MDA 20 feet. Increase LP Cat C visibility 1/8 SM.</p> <p><b>△</b> NA</p>	

HFJ AWOS-3 <b>118.275</b>	SPRINGFIELD APP CON <b>124.95 318.2</b>	CTAF <b>122.9</b>
------------------------------	--	----------------------



ELEV <b>1483</b>	TDZE <b>1483</b>
------------------	------------------



CATEGORY	A	B	C	D
LP MDA	1920-1	437 (500-1)	1920-1¼ 437 (500-1¼)	NA
LNAV MDA	1940-1	457 (500-1)	1940-1⅝ 457 (500-1⅝)	NA
<b>C</b> CIRCLING	2000-1 517 (600-1)	2180-1 697 (700-1)	2180-2 697 (700-2)	NA

NC-3, 06 OCT 2022 to 03 NOV 2022

NC-3, 06 OCT 2022 to 03 NOV 2022

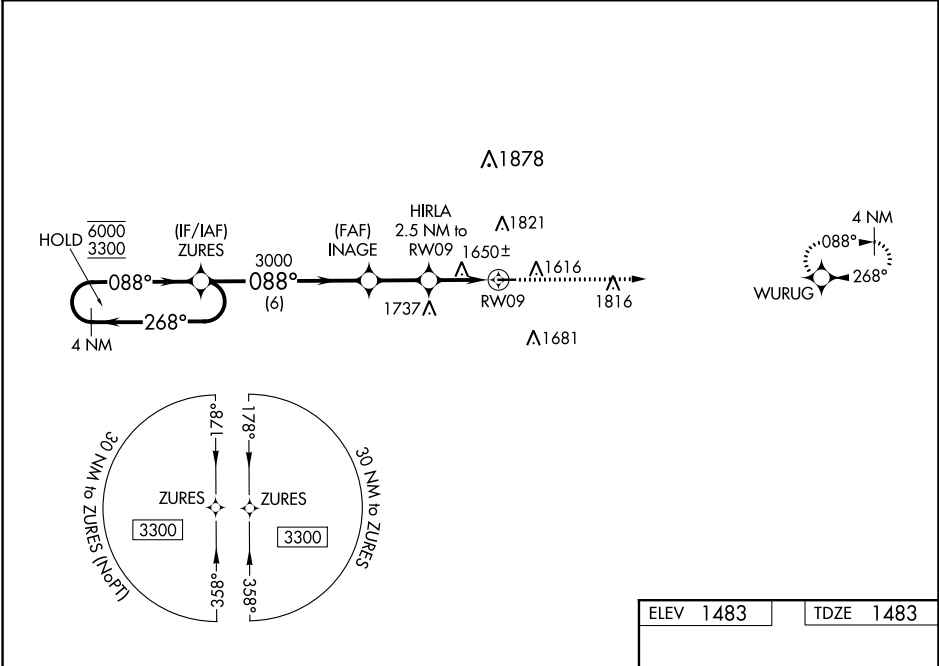
WAAS CH <b>63133</b> <b>W09A</b>	APP CRS <b>088°</b>	Rwy Idg <b>3599</b> TDZE <b>1483</b> Apt Elev <b>1483</b>
--	------------------------	---

# RNAV (GPS) RWY 9

CASSVILLE MUNI (94K)

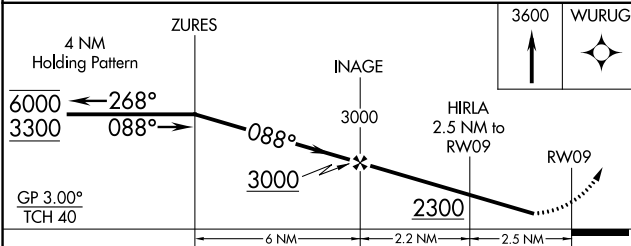
RNP APCH - GPS.	<p><b>▽</b> Rwy 9 helicopter visibility reduction below 3/4 SM NA. Baro-VNAV NA.  <b>△ NA</b> Use Monett altimeter setting; when not received, use Rogers altimeter setting and increase LPV DA to 1906 feet and visibility 1/8 SM all Cats, LNAV/VNAV DA to 2011 feet and visibility 1/8 SM all Cats; increase all MDAs 20 feet.</p>	MISSED APPROACH: Climb to 3600 direct WURUG and hold.
<p>HFJ AWOS-3 <b>118.275</b></p>		<p>SPRINGFIELD APP CON <b>124.95 318.2</b></p>

HFJ AWOS-3 <b>118.275</b>	SPRINGFIELD APP CON <b>124.95 318.2</b>	CTAF <b>122.9</b>
------------------------------	--	----------------------

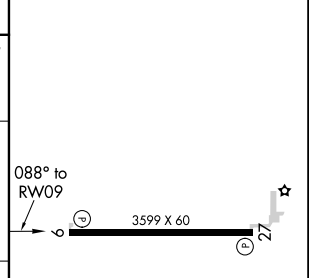


NC-3, 06 OCT 2022 to 03 NOV 2022

NC-3, 06 OCT 2022 to 03 NOV 2022



ELEV <b>1483</b>	TDZE <b>1483</b>
------------------	------------------



CATEGORY	A	B	C	D
LPV DA	1893-1 1/8	410 (500-1 1/8)		NA
LNAV/VNAV DA	1998-1 3/8	515 (600-1 3/8)		NA
LNAV MDA	1960-1	477 (500-1)	1960-1 3/8 477 (500-1 3/8)	NA
<b>C</b> CIRCLING	2000-1 517 (600-1)	2180-1 697 (700-1)	2180-2 697 (700-2)	NA

MRL Rwy 9-27