

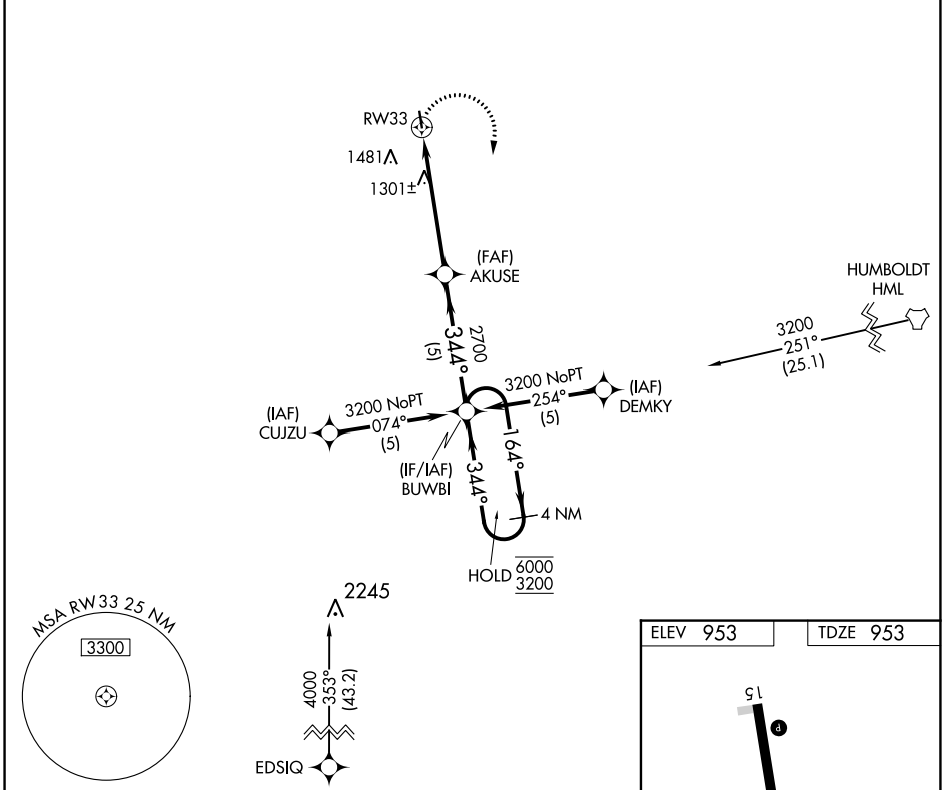
APP CRS	Rwy Idg	<b>3400</b>
<b>344°</b>	TDZE	<b>953</b>
	Apt Elev	<b>953</b>

# RNAV (GPS) RWY 33

WALHALLA MUNI (96D)

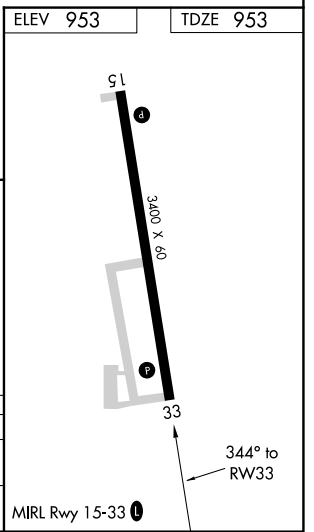
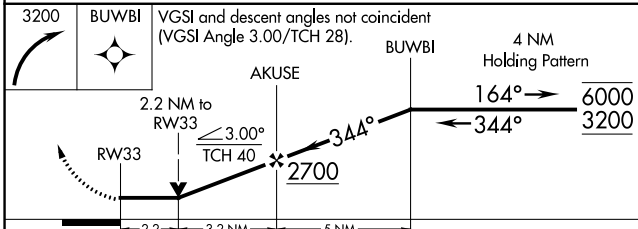
RNP APCH-GPS.		MISSED APPROACH: Climbing right turn to 3200 direct BUWBI and hold.
<p><b>▼</b> Rwy 33 helicopter visibility reduction below 3/4 SM NA.</p> <p><b>▲</b> When local altimeter setting not received, use Hallock altimeter setting.</p>		

AWOS-3PT <b>118.175</b>	MINNEAPOLIS CENTER <b>132.15 269.6</b>	CTAF <b>122.9 0</b>
----------------------------	---	------------------------



NC-1, 22 FEB 2024 to 21 MAR 2024

NC-1, 22 FEB 2024 to 21 MAR 2024



CATEGORY	A	B	C	D
LNVA MDA	1680-1	727 (800-1)	NA	
CIRCLING	1680-1 727 (800-1)	1960-1½ 1007 (1100-1½)	NA	