

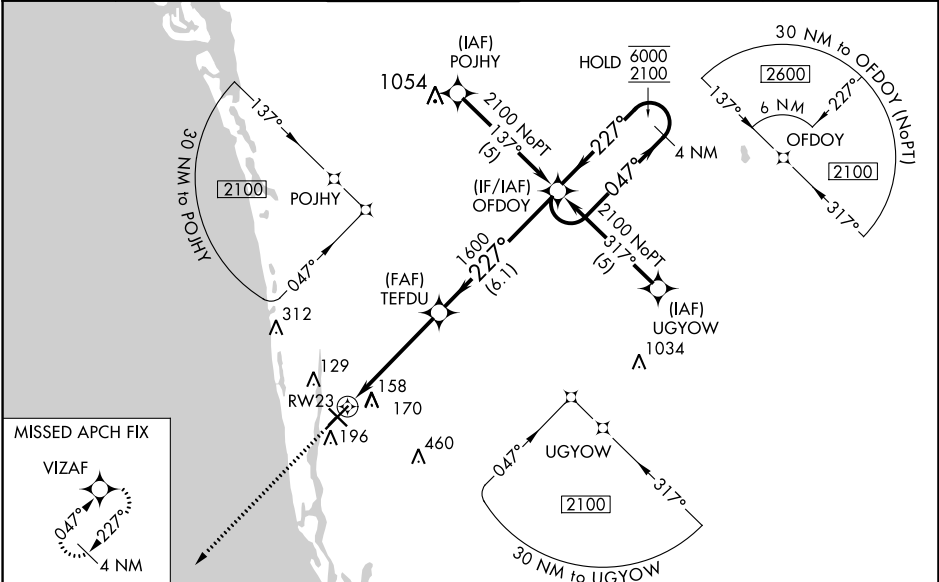
WAAS CH 69314 W23A	APP CRS 227°	Rwy ldg TDZE Apt Elev	5000 8 8
--	------------------------	-----------------------------	-------------------------------------

RNAV (GPS) RWY 23

NAPLES MUNI (APF)

RNP APCH.		MISSED APPROACH: Climb to 2100 direct VIZAF and hold.			
<p>▽ ▲ Rwy 23 helicopter visibility reduction below 3/4 SM NA. For uncompensated Baro-VNAV systems, LNAV/VNAV NA below 5°C or above 54°C.</p>					

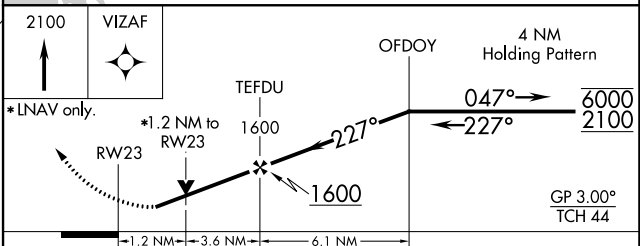
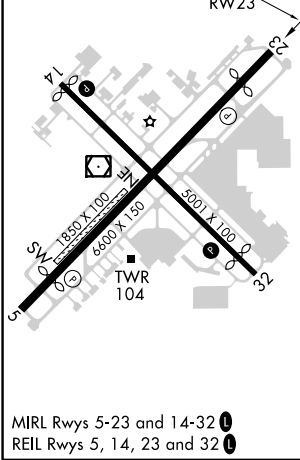
ATIS 134.225	FORT MYERS APP CON* 124.125 371.85	NAPLES TOWER* 128.5 (CTAF) 0	GND CON 121.6	CLNC DEL 118.0	CLNC DEL 124.125 (When twr closed)
------------------------	--	--	-------------------------	--------------------------	---



SE-3, 22 FEB 2024 to 21 MAR 2024

SE-3, 22 FEB 2024 to 21 MAR 2024

ELEV 8	D	TDZE 8
--------	----------	--------



CATEGORY	A	B	C	D
LPV DA		313-7/8	305 (400-7/8)	
LNAV/VNAV DA		461-13/8	453 (500-13/8)	
LNAV MDA	440-1	432 (500-1)	440-1 1/4	432 (500-1 1/4)
CIRCLING	580-1	572 (600-1)	680-2 672 (700-2)	820-2 3/4 812 (900-2 3/4)