

(METROS.DXO) 23334

METRO THREE DEPARTURE

AL-5506 (FAA)

ANN ARBOR MUNI (ARB)  
ANN ARBOR, MICHIGAN

**TOP ALTITUDE:  
3000**

EC-1, 22 FEB 2024 to 21 MAR 2024

EC-1, 22 FEB 2024 to 21 MAR 2024

ATIS 134.55  
CLNC DEL 121.6  
GND CON 121.6  
ANN ARBOR TOWER ★  
120.3 (CTAF)  
DETROIT DEP CON  
118.95 284.0

TAKEOFF MINIMUMS

Rwys 12, 30: NA - Environmental.  
Rwys 6, 24: Standard.

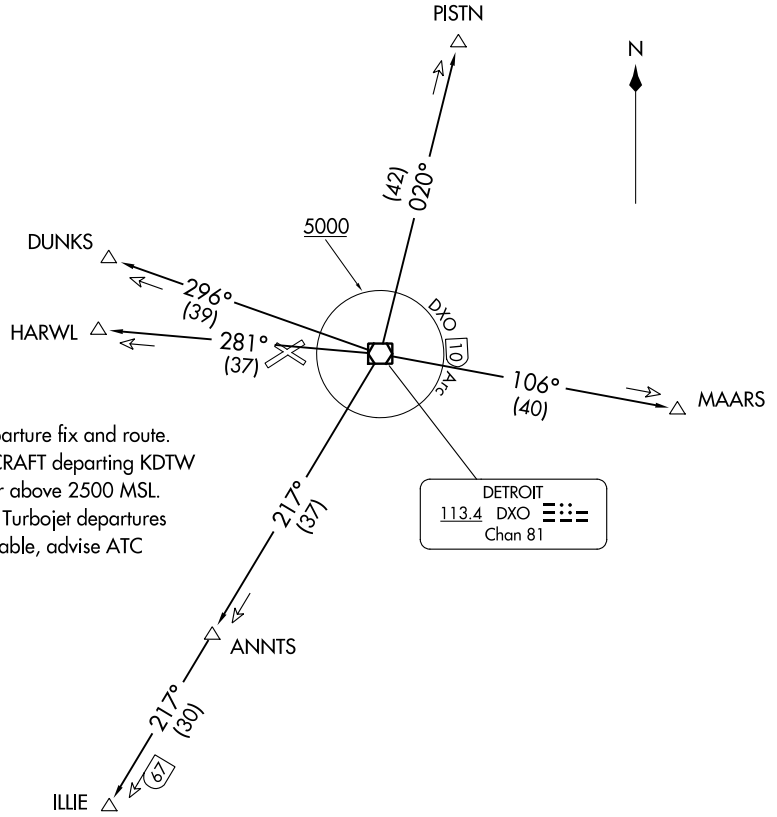
NOTE: RADAR required.  
NOTE: DME required.  
NOTE: For use by non-RNAV equipped aircraft only.

SPECIAL INSTRUCTIONS:

When using this departure, file the appropriate depicted departure fix and route.  
Aircraft over HARWL must file FL220 and below. PROP AIRCRAFT departing KDTW Rwy 21L/R and 22L/R westbound, cross DXO 3.5 DME at or above 2500 MSL.  
Aircraft landing Cleveland (CLE) must file MAARS transition. Turbojet departures at/above 10000, maintain 280K until advised by ATC. If unable, advise ATC prior to departure.

(NARRATIVE ON FOLLOWING PAGE)

NOTE: Chart not to scale.



METRO THREE DEPARTURE  
(METROS.DXO) 05NOV20

ANN ARBOR, MICHIGAN  
ANN ARBOR MUNI (ARB)



DEPARTURE ROUTE DESCRIPTION

TAKEOFF RUNWAYS 6/24: Climb on assigned heading, thence ...

..... maintain ATC assigned altitude for RADAR vectors to intercept filed/assigned transition or enroute fix/navaid. When ATC assigned altitude is at or above 5000, cross DXO 10 DME Arc at or above 5000 for noise abatement. If unable to comply, advise ATC prior to departure. Expect clearance to filed altitude/flight level within ten (10) minutes after departure.

DUNKS TRANSITION (METRO3.DUNKS): From over DXO VOR/DME on DXO R-296 to DUNKS.

HARWL TRANSITION (METRO3.HARWL): From over DXO VOR/DME on DXO R-281 to HARWL.

ILLIE TRANSITION (METRO3.ILLIE): From over DXO VOR/DME on DXO R-217 to ILLIE.

MAARS TRANSITION (METRO3.MAARS): From over DXO VOR/DME on DXO R-106 to MAARS.

PISTN TRANSITION (METRO3.PISTN): From over DXO VOR/DME on DXO R-020 to PISTN.

EC-1, 22 FEB 2024 to 21 MAR 2024

EC-1, 22 FEB 2024 to 21 MAR 2024