

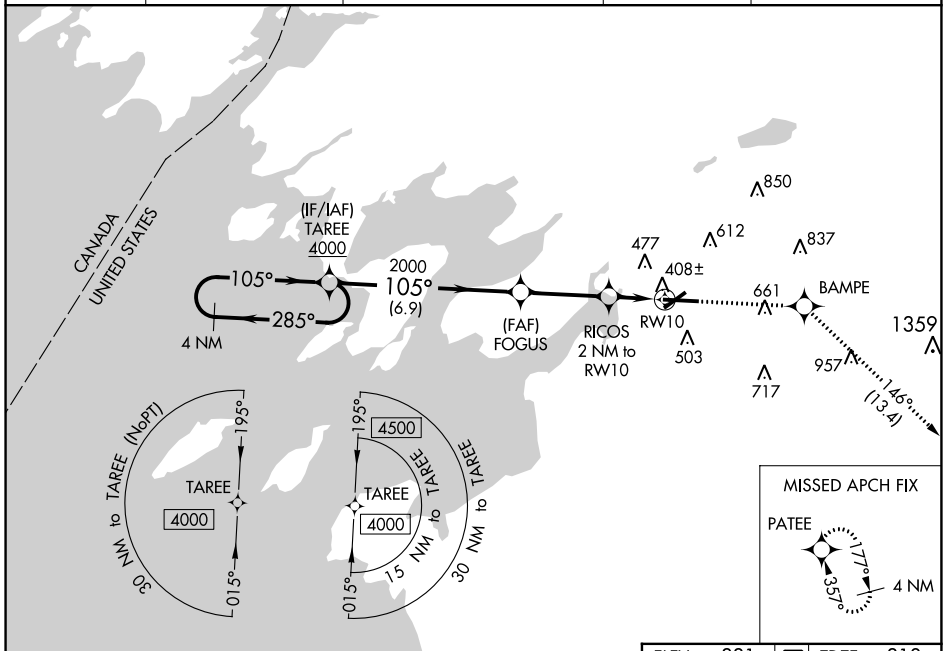
WAAS CH <b>53522</b> <b>W10A</b>	APP CRS <b>105°</b>	Rwy Idg TDZE Apt Elev	<b>7001</b> <b>318</b> <b>331</b>
--	------------------------	-----------------------------	---

# RNAV (GPS) RWY 10

WATERTOWN INTL (ART)

RNP APCH.	MISSED APPROACH: Climb to 3600 direct BAMPE and on track 146° to PATEE and hold.
<p>For uncompensated Baro-VNAV systems, LNAV/VNAV NA below -20°C or above 54°C. Rwy 10 helicopter visibility reduction below 3/4 SM NA.</p>	

ASOS <b>132.325</b>	KGTB ATIS <b>119.525</b>	WHEELER-SACK APP CON <b>124.875 257.6 307.125</b>	CLNC DEL <b>120.8</b>	UNICOM <b>123.0 (CTAF) 0</b>
------------------------	-----------------------------	--	--------------------------	---------------------------------



NE-2, 22 FEB 2024 to 21 MAR 2024

NE-2, 22 FEB 2024 to 21 MAR 2024

4 NM Holding Pattern		TAREE 4000		ELEV 331		TDZE 318
		3600	BAMPE	tr 146°	PATEE	
<p>4000 ← 285°</p> <p>→ 105°</p> <p>GP 3.00° TCH 47</p>		FOGUS 2000	RICOS 2 NM to RW10	* 1 NM to RW10	RW10	* LNAV only.
<p>→ 105°</p> <p>2000</p> <p>* 980</p>		6.9 NM	3.2 NM	1 NM	1 NM	
CATEGORY	A	B	C	D		
LPV DA		568-3/4	250 (300-3/4)			
LNAV/VNAV DA		578-3/4	260 (300-3/4)			
LNAV MDA		660-1	342 (400-1)			
CIRCLING	960-1	629 (700-1)	980-1 3/4 649 (700-1 3/4)	1080-2 1/2 749 (800-2 1/2)	HIRL Rwy 7-25	MIRL Rwy 10-28