

BIRMINGHAM, ALABAMA

AL-50 (FAA)

23222

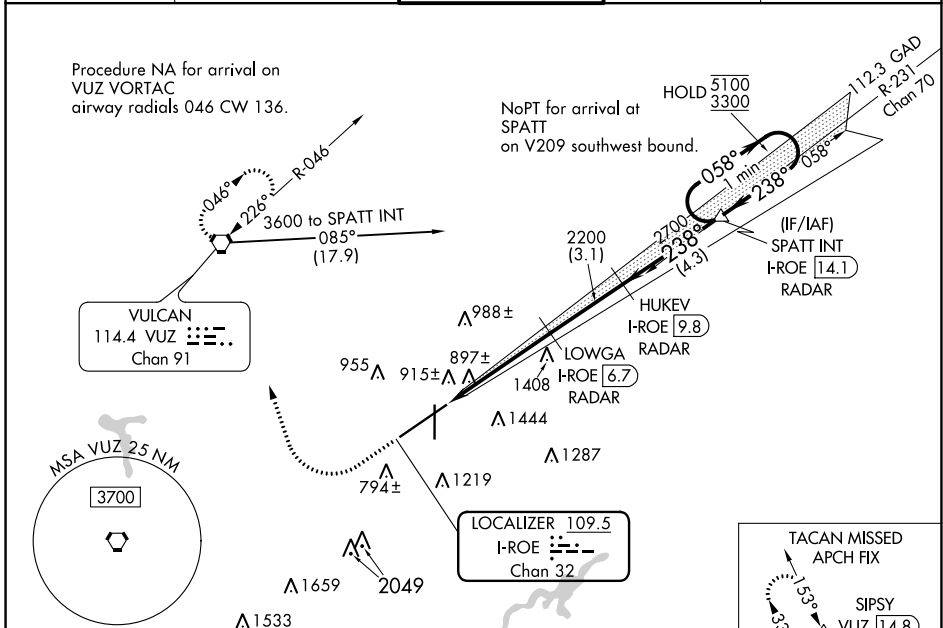
LOC/DME I-ROE 109.5 Chan 32	APP CRS 238°	Rwy Idg TDZE 641 Apt Elev 650	10801
---	------------------------	---	--------------

ILS RWY 24 (SA CAT II)

BIRMINGHAM-SHUTTLESWORTH INTL (BHM)

DME or RADAR required. Rwy 24 helicopter visibility reduction below RVR 4000 NA. Reduced lighting: requires specific OPSPEC, MSPEC, or LOA approval and use of autoland or HUD to touchdown.	MALSR 	MISSED APPROACH: Climb to 1300 then climbing right turn to 3000 direct VUZ VORTAC and hold (TACAN aircraft continue on VUZ VORTAC R-333 to SIPSY/VUZ 14.8 DME and hold NW, right turn, 153° inbound).
---	-----------	---

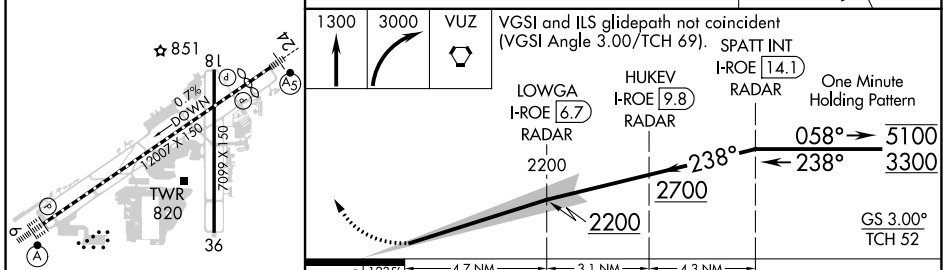
ATIS 119.4 270.1	BIRMINGHAM APP CON 123.8 256.8	BIRMINGHAM TOWER 119.9 317.725	GND CON 121.7 348.6	CLNC DEL 125.675 305.2
----------------------------	--	--	-------------------------------	----------------------------------



SE-4, 22 FEB 2024 to 21 MAR 2024

SE-4, 22 FEB 2024 to 21 MAR 2024

ELEV 650	D	TDZE 641	1541	1676
----------	----------	----------	------	------



CATEGORY	A	B	C	D
S-ILS 24		SA CAT II RA 92/12	100 DA 741	

REIL Rws 18 and 36
TDZ/CL Rwy 6
HIRL Rwy 6-24
MIRL Rwy 18-36

SA CATEGORY II ILS-SPECIAL AIRCREW & AIRCRAFT CERTIFICATION REQUIRED

BIRMINGHAM, ALABAMA
Amdt 5 28FEB19

BIRMINGHAM-SHUTTLESWORTH INTL (BHM)
33°34'N-86°45'W
ILS RWY 24 (SA CAT II)