

(TERPZ7.TERPZ) 20086

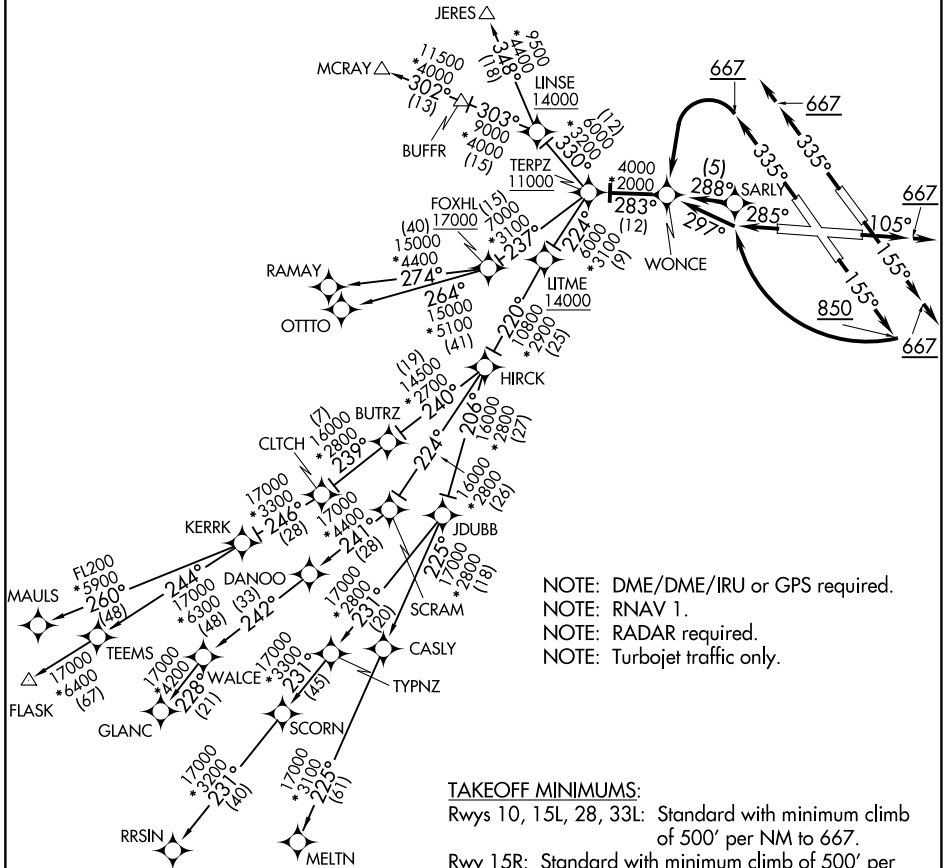
TERPZ SEVEN DEPARTURE (RNAV)

BALTIMORE/
WASHINGTON INTL THURGOOD MARSHALL (BWI)
BALTIMORE, MARYLAND

AL-804

TOP ALTITUDE:
RAMAY, OTTTO, MAULS, FLASK,
RRSIN, GLANC, MELTN
TRANSITIONS: 17000
JERES, MCRAY TRANSITIONS:
16000

D-ATIS
115.1 127.8
CLNC DEL
118.05
CPDLC
GND CON
121.9
BALTIMORE TOWER
119.4 257.8
POTOMAC DEP CON
128.7 307.9



NOTE: DME/DME/IRU or GPS required.
NOTE: RNAV 1.
NOTE: RADAR required.
NOTE: Turbojet traffic only.

TAKEOFF MINIMUMS:

Rwys 10, 15L, 28, 33L: Standard with minimum climb of 500' per NM to 667.
Rwy 15R: Standard with minimum climb of 500' per NM to 4000.
Rwy 33R: Standard with minimum climb of 500' per NM to 800.

(NARRATIVE ON FOLLOWING PAGE)
(NOTES CONTINUED ON FOLLOWING PAGE)

NOTE: Chart not to scale.

TERPZ SEVEN DEPARTURE (RNAV)
(TERPZ7.TERPZ) 26MAR20

BALTIMORE/
WASHINGTON INTL THURGOOD MARSHALL (BWI)
BALTIMORE, MARYLAND

NE-3, 22 FEB 2024 to 21 MAR 2024

NE-3, 22 FEB 2024 to 21 MAR 2024

(TERPZ7.TERPZ) 20086

BALTIMORE/

TERPZ SEVEN DEPARTURE (RNAV) AL-804

WASHINGTON INTL THURGOOD MARSHALL (BWI)
BALTIMORE, MARYLAND



DEPARTURE ROUTE DESCRIPTION

TAKEOFF RUNWAY 10: Climb on heading 105° to 667, then on heading 105°, expect RADAR vectors to WONCE, then on track 283° to cross TERPZ at or above 11000, thence

TAKEOFF RUNWAY 15L: Climb on heading 155° to 667, then on heading 155°, expect RADAR vectors to WONCE, then on track 283° to cross TERPZ at or above 11000, thence

TAKEOFF RUNWAY 15R: Climb on heading 155° to 850, then right turn direct SARLY, then on track 288° to WONCE, then on track 283° to cross TERPZ at or above 11000, thence

TAKEOFF RUNWAY 28: Climb on heading 285° to intercept course 297° to WONCE, then on track 283° to cross TERPZ at or above 11000, thence

TAKEOFF RUNWAY 33L: Climb on heading 335° to 667, then left turn direct WONCE, then on track 283° to cross TERPZ at or above 11000, thence

TAKEOFF RUNWAY 33R: Climb on heading 335° to 667, then on heading 335°, expect RADAR vectors to WONCE, then on track 283° to cross TERPZ at or above 11000, thence

. . . on assigned transition: Departures on JERES and MCRAY transitions maintain 16000.

Departures on RAMAY, OTTTO, MAULS, FLASK, MELTN, RRSIN, GLANC transitions maintain 17000, expect further clearance to filed altitude within 10 minutes after departure.

FLASK TRANSITION (TERPZ7.FLASK)

GLANC TRANSITION (TERPZ7.GLANC)

JERES TRANSITION (TERPZ7.JERES)

MAULS TRANSITION (TERPZ7.MAULS)

MCRAY TRANSITION (TERPZ7.MCRAY)

MELTN TRANSITION (TERPZ7.MELTN)

OTTTO TRANSITION (TERPZ7.OTTTO)

RAMAY TRANSITION (TERPZ7.RAMAY)

RRSIN TRANSITION (TERPZ7.RRSIN)

NE-3, 22 FEB 2024 to 21 MAR 2024

NE-3, 22 FEB 2024 to 21 MAR 2024

TERPZ SEVEN DEPARTURE (RNAV)
(TERPZ7.TERPZ) 26MAR20

BALTIMORE/
WASHINGTON INTL THURGOOD MARSHALL (BWI)
BALTIMORE, MARYLAND