

WAAS CH 93832 W02A	APP CRS 023°	Rwy ldg TDZE 342 Apt Elev 342
--	------------------------	---

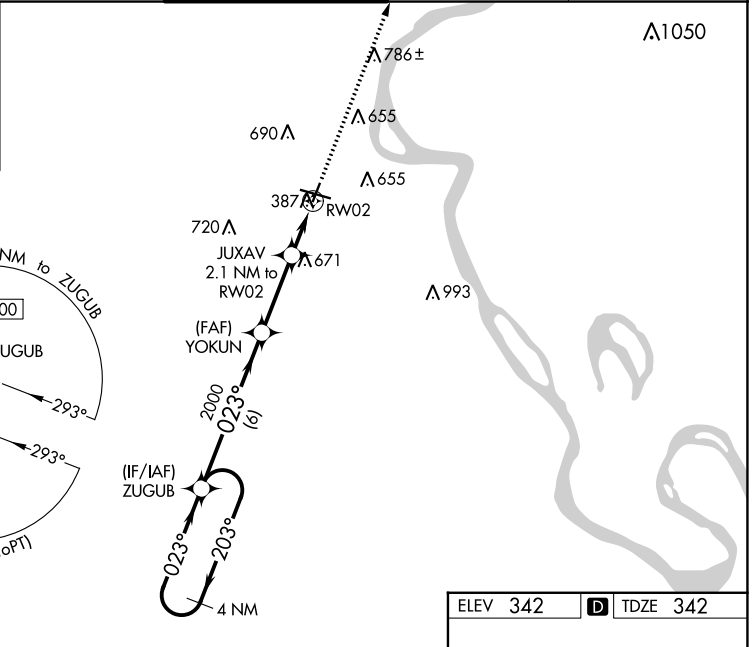
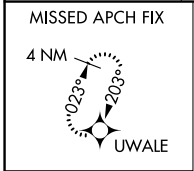
RNAV (GPS) RWY 2

CAPE GIRARDEAU RGNL (CGI)

⚠ For uncompensated Baro-VNAV systems, LNAV/VNAV NA below -17°C (2°F) or above 54°C (130°F). DME/DME RNP-0.3 NA. When local altimeter setting not received, use Cairo Rgnl altimeter setting and increase all DA 48 feet and all MDA 60 feet; increase LPV all Cats, LNAV/VNAV all Cats and LNAV Cat C/D visibilities 1/8 mile and Circling Cat C/D visibility 1/4 mile. Helicopter visibility reduction below 3/4 SM NA. Baro-VNAV and VDP NA when using Cairo Rgnl altimeter setting.

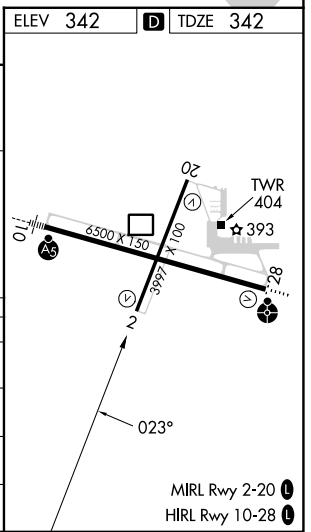
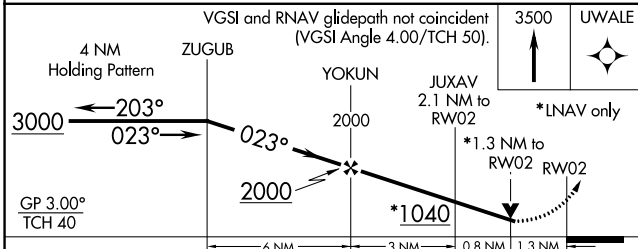
MISSED APPROACH: Climb to 3500 direct UWALE and hold, continue climb-in-hold to 3500.

ASOS 120.55	MEMPHIS CENTER 133.65 292.15	CAPE GIRARDEAU TOWER * 125.525 (CTAF) 0	GND CON 121.6	UNICOM 122.95
-----------------------	--	---	-------------------------	-------------------------



NC-3, 22 FEB 2024 to 21 MAR 2024

NC-3, 22 FEB 2024 to 21 MAR 2024



CATEGORY	A	B	C	D
LPV DA		784-1½	442 (500-1½)	
LNAV/VNAV DA		839-1¾	497 (500-1¾)	
LNAV MDA	940-1	598 (600-1)	940-1¾	598 (600-1¾)
CIRCLING	940-1 598 (600-1)	960-1 618 (700-1)	1000-1¾ 658 (700-1¾)	1080-2¼ 738 (800-2¼)