

WAAS CH <b>77599</b> <b>W02A</b>	APP CRS <b>021°</b>	Rwy Idg TDZE Apt Elev	<b>7401</b> <b>889</b> <b>889</b>
--	------------------------	-----------------------------	---


# RNAV (GPS) RWY 2

COLUMBIA RGNL (COT)

RNP APCH-GPS.

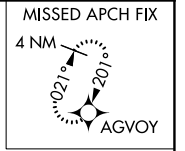
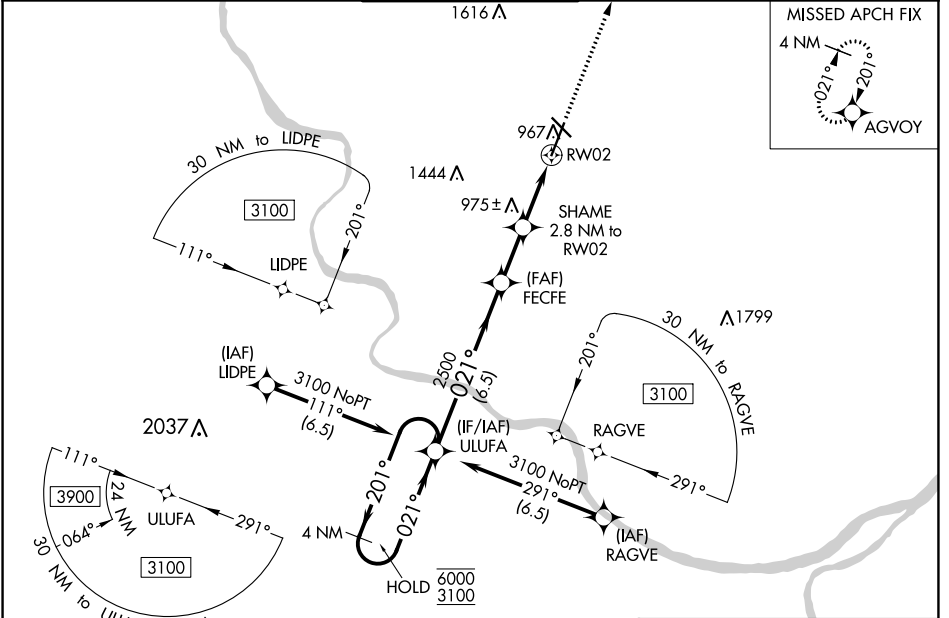
**⚠** Circling NA for Cat D west of Rwy 2 and 13. For uncompensated Baro-VNAV systems, LNAV/VNAV NA below -16°C or above 54°C. For inop ALS, increase LNAV/VNAV all Cats visibility to RVR 4000 and increase LNAV Cat C/D visibility to RVR 5500.  
\*RVR 1800 authorized with the use of FD or AP or HUD to DA.

MALSRL

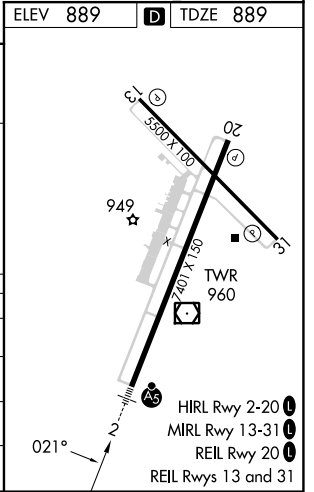
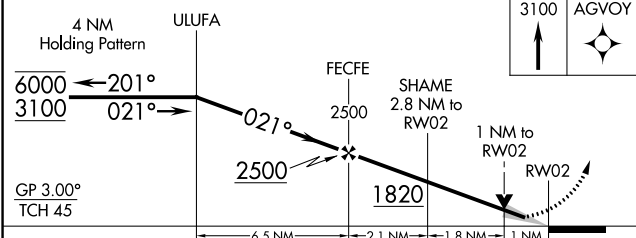


MISSED APPROACH: Climb to 3100 direct AGVOY and hold.

ATIS <b>128.45</b>	MIZZU APP CON <b>124.375 353.925</b>	<b>COLUMBIA TOWER *</b> <b>119.3 (CTAF) 363.25</b>	GND CON <b>121.6</b>	UNICOM <b>122.95</b>
-----------------------	---	---	-------------------------	-------------------------



ELEV 889	<b>D</b> TDZE 889
----------	-------------------



CATEGORY	A	B	C	D
LPV DA*	1089/24		200 (200-½)	
LNAV/VNAV DA	1143/24		254 (300-½)	
LNAV MDA	1240/24	351 (400-½)	1240/30	351 (400-¾)
<b>C</b> CIRCLING	1280-1 391 (400-1)	1340-1 451 (500-1)	1360-1½ 471 (500-1½)	1440-2 551 (600-2)

NC-3, 22 FEB 2024 to 21 MAR 2024

NC-3, 22 FEB 2024 to 21 MAR 2024