

## CHCLL FIVE DEPARTURE (RNAV)

CINCINNATI/NORTHERN KENTUCKY INTL (CVG)

AL-655 (FAA)

COVINGTON, KENTUCKY

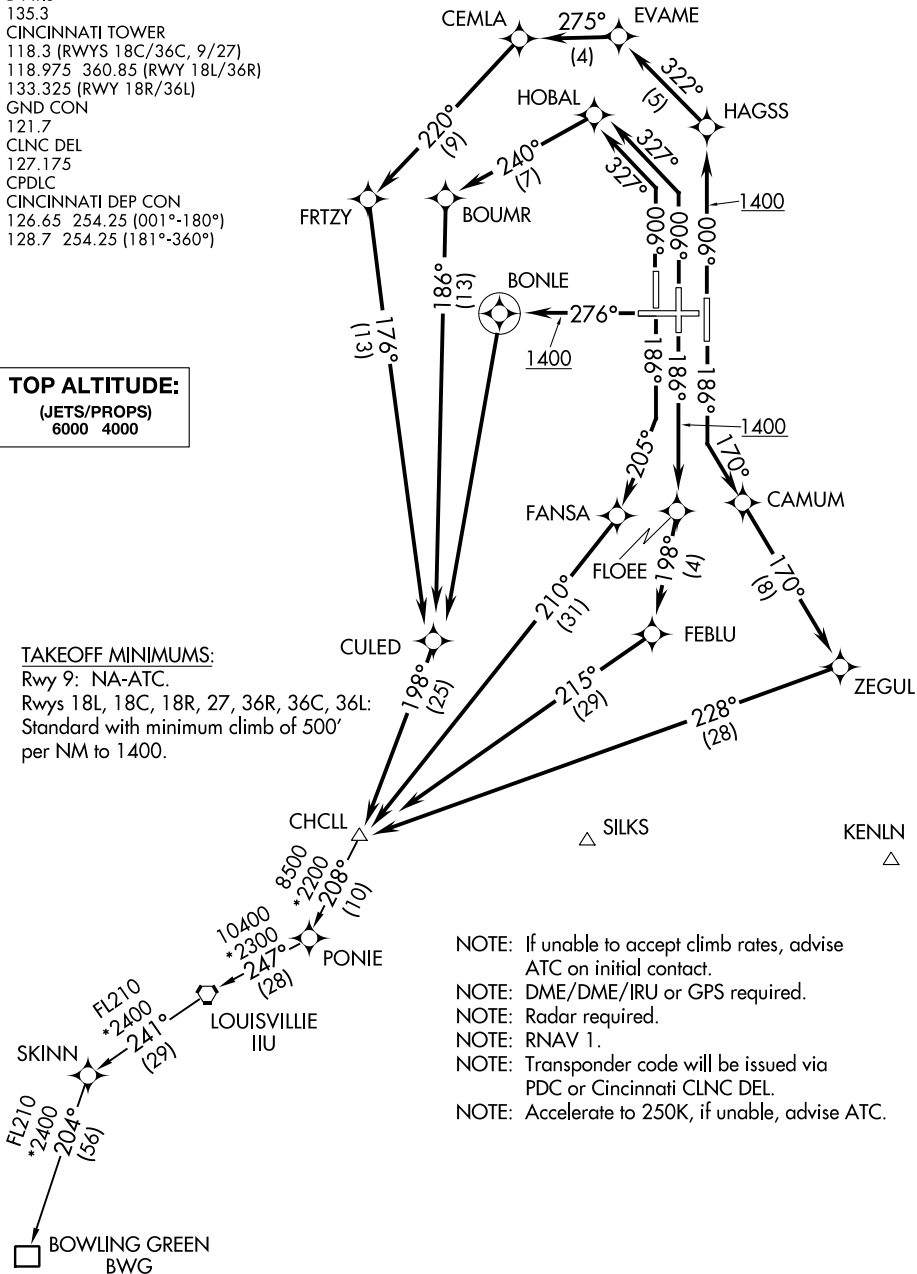
D-ATIS  
135.3  
CINCINNATI TOWER  
118.3 (RWYS 18C/36C, 9/27)  
118.975 360.85 (RWY 18L/36R)  
133.325 (RWY 18R/36L)  
GND CON  
121.7  
CLNC DEL  
127.175  
CPDLC  
CINCINNATI DEP CON  
126.65 254.25 (001°-180°)  
128.7 254.25 (181°-360°)

**TOP ALTITUDE:**

(JETS/PROPS)  
6000 4000

TAKEOFF MINIMUMS:

Rwy 9: NA-ATC.  
Rwys 18L, 18C, 18R, 27, 36R, 36C, 36L:  
Standard with minimum climb of 500'  
per NM to 1400.



- NOTE: If unable to accept climb rates, advise ATC on initial contact.
- NOTE: DME/DME/IRU or GPS required.
- NOTE: Radar required.
- NOTE: RNAV 1.
- NOTE: Transponder code will be issued via PDC or Cincinnati CLNC DEL.
- NOTE: Accelerate to 250K, if unable, advise ATC.

(NARRATIVE ON FOLLOWING PAGE)

NOTE: Chart not to scale.

## CHCLL FIVE DEPARTURE (RNAV)

(CHCLL5.CHCLL) 10SEPT20

COVINGTON, KENTUCKY

CINCINNATI/NORTHERN KENTUCKY INTL (CVG)

SE-1, 22 FEB 2024 to 21 MAR 2024

DEPARTURE ROUTE DESCRIPTION



TAKEOFF RUNWAY 18L: Climb on heading 186° to intercept course 170° to CAMUM, then on depicted route to CHCLL, thence. . . .

TAKEOFF RUNWAY 18C: Climb on heading 186° to 1400, then direct FLOEE, then on depicted route to CHCLL, thence. . . .

TAKEOFF RUNWAY 18R: Climb on heading 186° to intercept course 205° to FANSA, then on depicted route to CHCLL, thence. . . .

TAKEOFF RUNWAY 27: Climb on heading 276° to 1400, then direct BONLE, then left turn direct CULED, then on depicted route to CHCLL, thence. . . .

TAKEOFF RUNWAY 36R: Climb on heading 006° to 1400, then direct HAGSS, then on depicted route to CHCLL, thence. . . .

TAKEOFF RUNWAY 36C, 36L: Climb on heading 006° to intercept course 327° to HOBAL, then on depicted route to CHCLL, thence. . . .

. . . . turbojet aircraft maintain 6000, all other aircraft maintain 4000. Expect clearance to filed altitude within 10 minutes after departure.

BOWLING GREEN TRANSITION (CHCLL5.BWG):  
LOUISVILLE TRANSITION (CHCLL5.IIU):

SE-1, 22 FEB 2024 to 21 MAR 2024

SE-1, 22 FEB 2024 to 21 MAR 2024