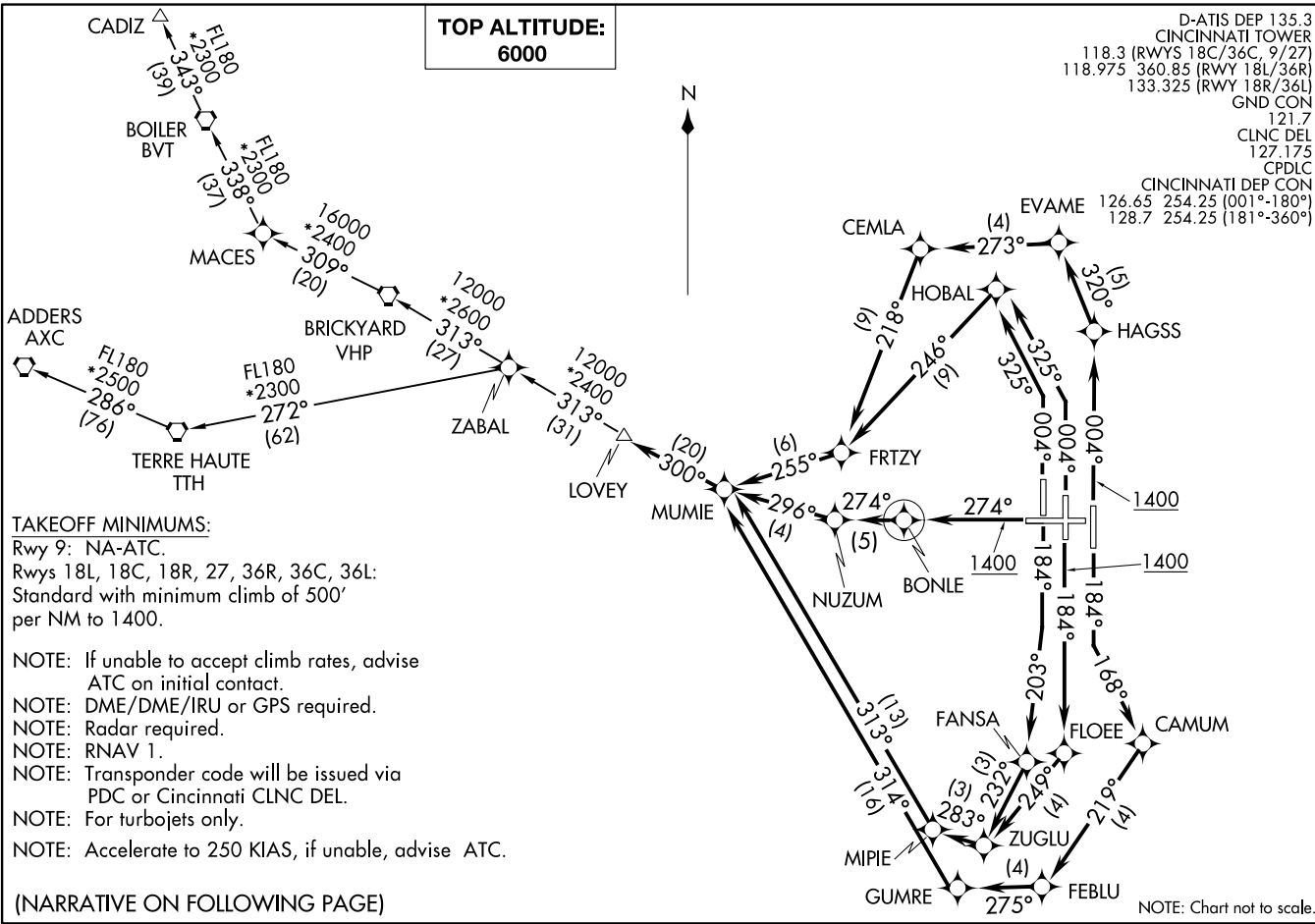


LOVEY SIX DEPARTURE (RNAV)
(LOVEY6.LOVEY) 10DECT15

CINCINNATI/NORTHERN KENTUCKY INTL (CVG)
COVINGTON, KENTUCKY

(LOVEY6.LOVEY) 22027
LOVEY SIX DEPARTURE (RNAV)

CINCINNATI/NORTHERN KENTUCKY INTL (CVG)
AL-655 (FAA)
COVINGTON, KENTUCKY



TOP ALTITUDE:
6000

TAKEOFF MINIMUMS:
 Rwy 9: NA-ATC.
 Rwy 18L, 18C, 18R, 27, 36R, 36C, 36L:
 Standard with minimum climb of 500'
 per NM to 1400.

- NOTE: If unable to accept climb rates, advise ATC on initial contact.
- NOTE: DME/DME/IRU or GPS required.
- NOTE: Radar required.
- NOTE: RNAV 1.
- NOTE: Transponder code will be issued via PDC or Cincinnati CLNC DEL.
- NOTE: For turbojets only.
- NOTE: Accelerate to 250 KIAS, if unable, advise ATC.

(NARRATIVE ON FOLLOWING PAGE)

NOTE: Chart not to scale.



DEPARTURE ROUTE DESCRIPTION

TAKEOFF RUNWAY 18L: Climb heading 184° to intercept course 168° to CAMUM, then on depicted route to MUMIE. . . .

TAKEOFF RUNWAY 18C: Climb heading 184° to 1400, then direct FLOEE, then on depicted route to MUMIE, thence. . . .

TAKEOFF RUNWAY 18R: Climb heading 184° to intercept course 203° to FANSA, then on depicted route to MUMIE, thence. . . .

TAKEOFF RUNWAY 27: Climb heading 274° to 1400, then direct BONLE, then on depicted route to MUMIE, thence. . . .

TAKEOFF RUNWAY 36R: Climb heading 004° to 1400, then direct HAGSS, then on depicted route to MUMIE, thence. . . .

TAKEOFF RUNWAY 36C: Climb heading 004° to intercept course 325° to HOBAL, then on depicted route to MUMIE, thence. . . .

TAKEOFF RUNWAY 36L: Climb heading 004° to intercept course 325° to HOBAL, then on depicted route to MUMIE, thence. . . .

. . . . on depicted route to LOVEY. Maintain 6000. Expect clearance to filed altitude within 10 minutes after departure.

ADDERS TRANSITION (LOVEY6.AXC):

CADIZ TRANSITION (LOVEY6.CADIZ):

SE-1, 22 FEB 2024 to 21 MAR 2024

SE-1, 22 FEB 2024 to 21 MAR 2024