

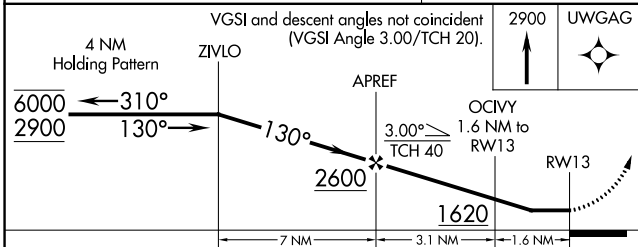
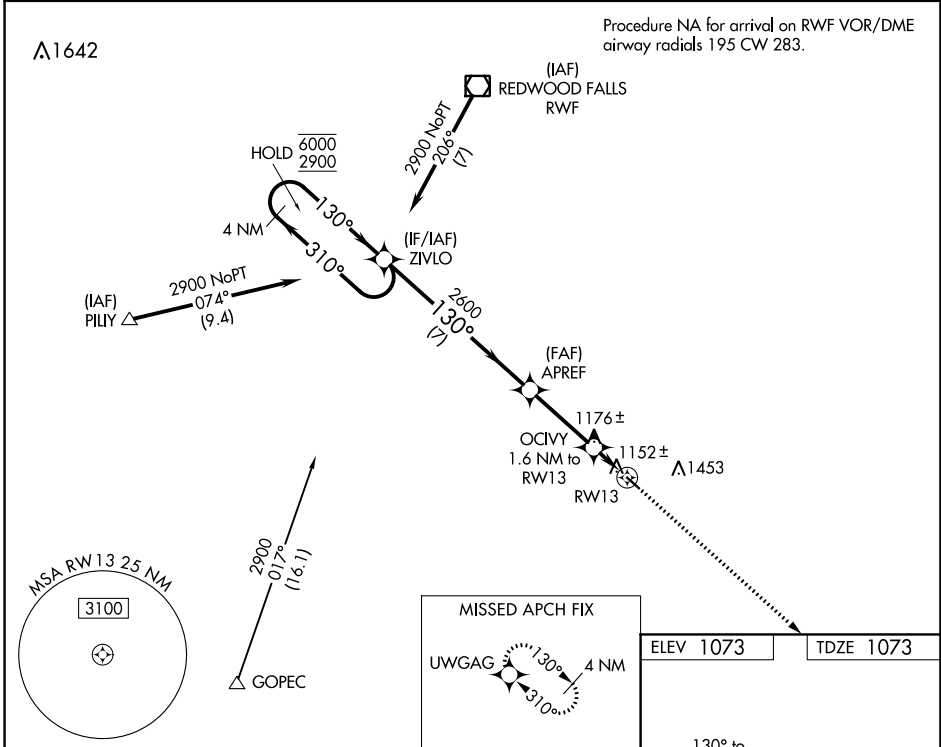
WAAS CH 86331 W13A	APP CRS 130°	Rwy Idg TDZE Apt Elev	3402 1073 1073
--	------------------------	-----------------------------	---

RNAV (GPS) RWY 13

SPRINGFIELD MUNI (D42)

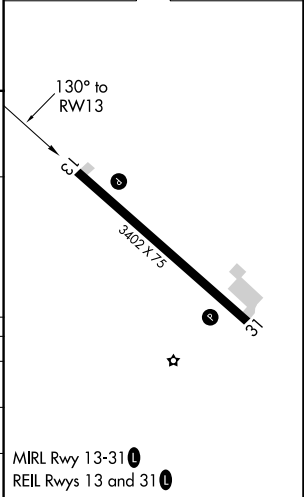
RNP APCH.	MISSED APPROACH: Climb to 2900 direct UWGAG and hold.
<p>▼ Rwy 13 helicopter visibility reduction below ¼ SM NA.</p> <p>▲ NA Use Redwood Falls altimeter setting.</p>	

RWF ASOS 126.575	MINNEAPOLIS CENTER 127.1 290.2	UNICOM 122.8 (CTAF) 0
----------------------------	--	---------------------------------



ELEV 1073	TDZE 1073
-----------	-----------

CATEGORY	A	B	C	D
LP MDA	1500-1	427 (500-1)	1500-1¼ 427 (500-1¼)	NA
LNAV MDA	1520-1	447 (500-1)	1520-1⅜ 447 (500-1⅜)	NA
CIRCLING	1660-1 587 (600-1)	1820-1 747 (800-1)	1820-2¼ 747 (800-2¼)	NA



MIRL Rwy 13-31 0
REIL Rwy 13 and 31 0

NC-1, 07 OCT 2021 to 04 NOV 2021

NC-1, 07 OCT 2021 to 04 NOV 2021

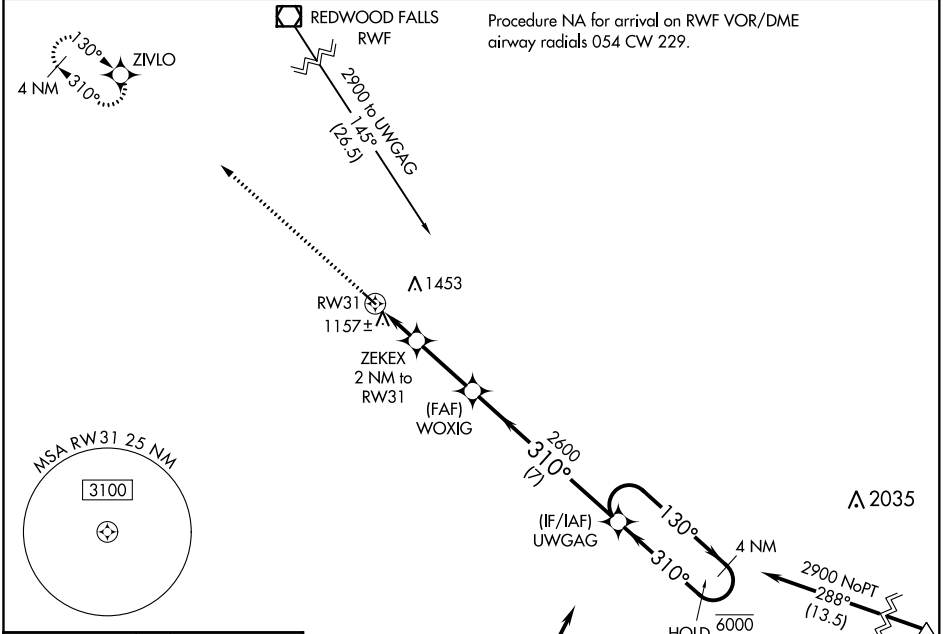
APP CRS	Rwy Idg	3402
310°	TDZE	1073
	Apt Elev	1073

RNAV (GPS) RWY 31

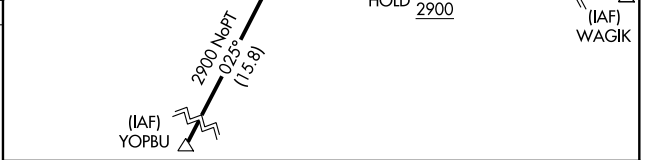
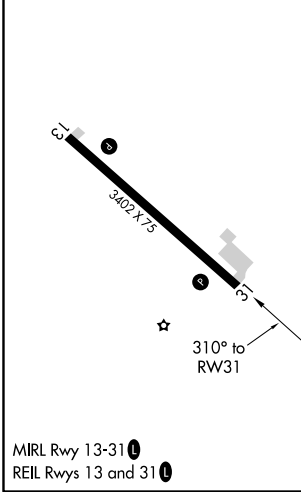
SPRINGFIELD MUNI (D42)

RNP APCH.	MISSED APPROACH: Climb to 2900 direct ZIVLO and hold.
NA	Use Redwood Falls alimeter setting.

RWF ASOS 126.575	MINNEAPOLIS CENTER 127.1 290.2	UNICOM 122.8 (CTAF) 0
----------------------------	--	---------------------------------



ELEV 1073	TDZE 1073
-----------	-----------



2900	ZIVLO	VGSI and descent angles not coincident (VGSI Angle 3.00/TCH 20).	UWGAG	4 NM Holding Pattern
	WOXIG			
	ZEKEX 2 NM to RW31	3.00 TCH 40		
	RW31	1740	2600	130° → 6000 ← 310° 2900
	2 NM	2.7 NM	7 NM	

CATEGORY	A	B	C	D
LNAV MDA	1500-1	427 (500-1)	1500-1¼ 427 (500-1¼)	NA
CIRCLING	1660-1 587 (600-1)	1820-1 747 (800-1)	1820-2¼ 747 (800-2¼)	NA

NC-1, 07 OCT 2021 to 04 NOV 2021

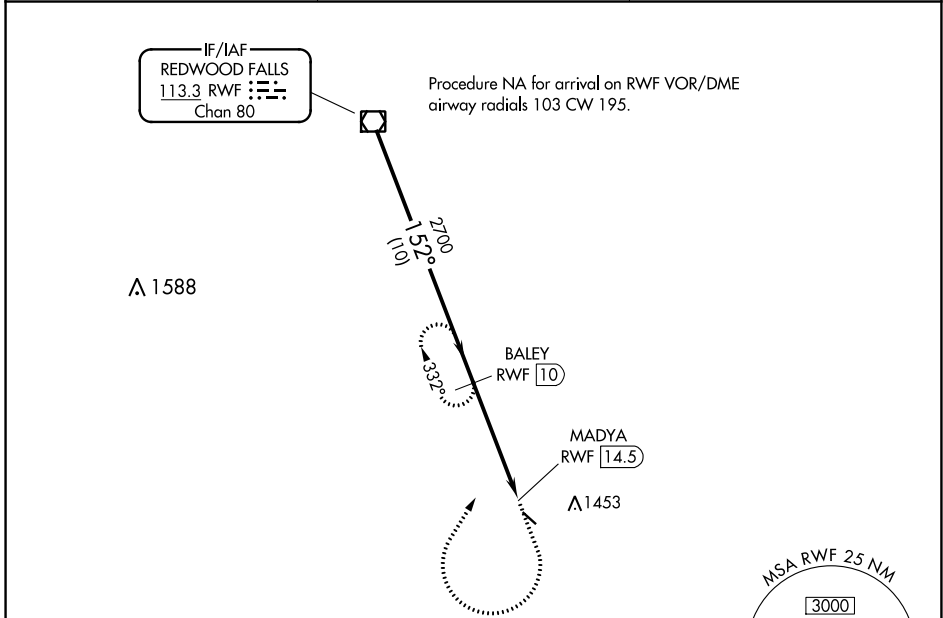
NC-1, 07 OCT 2021 to 04 NOV 2021

VOR/DME RWF 113.3 Chan 80	APP CRS 152°	Rwy Idg TDZE Apt Elev	3402 1073 1073
---	------------------------	-----------------------------	---

VOR RWY 13
SPRINGFIELD MUNI (D42)

DME required.	MISSED APPROACH: Climb to 2000 then climbing right turn to 2700 on heading 030° and RWF R-152 to BALEY/10 DME and hold.
<p>▼ Procedure NA at night. Rwy 13 helicopter visibility reduction below 1 SM NA. Use Redwood Falls altimeter setting.</p> <p>▲ NA</p>	

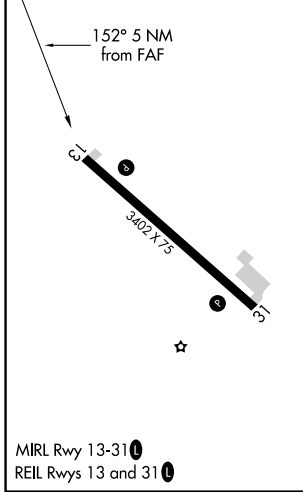
RWF ASOS 126.575	MINNEAPOLIS CENTER 127.1 290.2	UNICOM 122.8 (CTAF)
----------------------------	--	-------------------------------



NC-1, 07 OCT 2021 to 04 NOV 2021

NC-1, 07 OCT 2021 to 04 NOV 2021

ELEV 1073	TDZE 1073
-----------	-----------



VGSI and descent angles not coincident (VGSI Angle 3.00/TCH 20).		2000	2700	RWF R-152	BALEY RWF 10
RWF VOR/DME	BALEY RWF 10	↑	hdg 030°		
2700	2700	3.01° TCH 40		MADYA RWF 14.5	
10 NM		4.5 NM		0.5	
CATEGORY	A	B	C	D	
S-13	1620-1	547 (600-1)	1620-1 3/4 547 (600-1 3/4)	NA	
CIRCLING	1660-1 587 (600-1)	1820-1 747 (800-1)	1820-2 1/4 747 (800-2 1/4)	NA	