

APP CRS	Rwy Idg	3600
133°	TDZE	1606
	Apt Elev	1608

RNAV (GPS) RWY 14

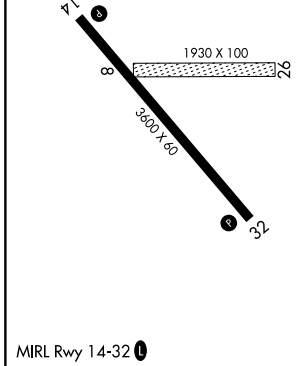
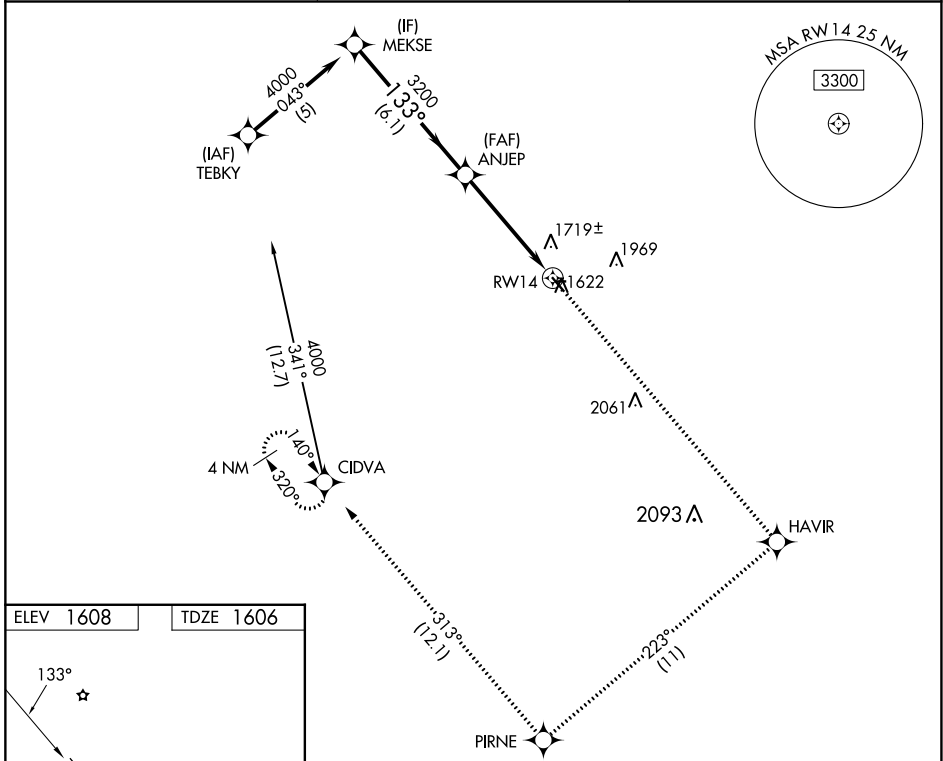
ROBERTSON FLD (D55)

RNP APCH - GPS.

Circling NA to Rwy 8 and 26. Rwy 14 helicopter visibility reduction below 3/4 SM NA. When local altimeter setting not received, use Devils Lake altimeter setting and increase all MDAs 140 feet and LNAV visibility Cat C 3/8 SM, and Circling visibility Cat C 1/2 SM.

MISSED APPROACH: Climb to 4000 direct HAVIR and on track 223° to PIRNE on track 313° to CIDVA and hold.

AWOS-3 118.225	MINNEAPOLIS CENTER 132.15 269.6	UNICOM 122.8 (CTAF) 0
--------------------------	---	---------------------------------



	4000	HAVIR	PIRNE	CIDVA
	↑	✧	tr 223°	tr 313°
	ANJEP	VGSI and descent angles not coincident (VGSI Angle 3.00/TCH 28).		
	4000	3200	3.04° TCH 40	1 NM to RWY14
				RWY14
		6.1 NM	3.8 NM	1 NM
CATEGORY	A	B	C	D
LNAV MDA	2100-1	494 (500-1)	2100-1 3/8 494 (500-1 3/8)	NA
CIRCLING	2240-1	632 (700-1)	2320-2 712 (800-2)	NA

NC-1, 22 FEB 2024 to 21 MAR 2024

NC-1, 22 FEB 2024 to 21 MAR 2024

WAAS CH 50515 W32A	APP CRS 313°	Rwy ldg TDZE Apt Elev	3600 1608 1608
--	------------------------	-----------------------------	---

RNAV (GPS) RWY 32

ROBERTSON FLD (D55)

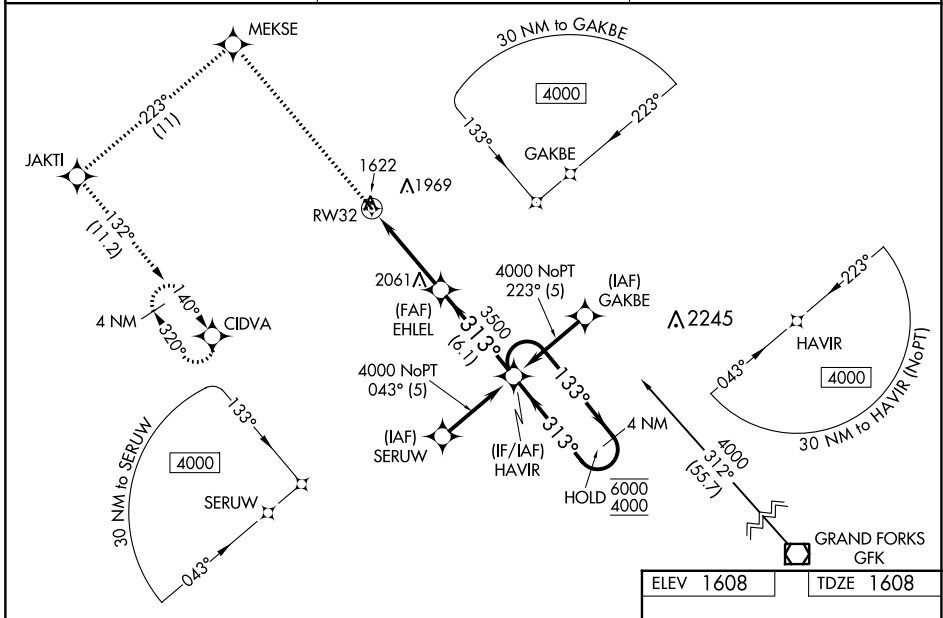
RNP APCH - GPS.

⚠ Circling NA to Rws 8 and 26. Rwy 32 helicopter visibility reduction below ¼ SM NA. Baro-VNAV NA when using Devils Lake altimeter setting. For uncompensated Baro-VNAV systems, LNAV/VNAV NA below -18°C or above 54°C. When local altimeter setting not received, use Devils Lake altimeter setting and increase LPV DA to 1983 feet; increase LNAV/VNAV DA to 2284 feet and all visibilities ¼ SM. Increase all MDAs 140 feet and LNAV visibility Cat A/C ½ SM, and Circling visibility Cat A/C ½ SM.

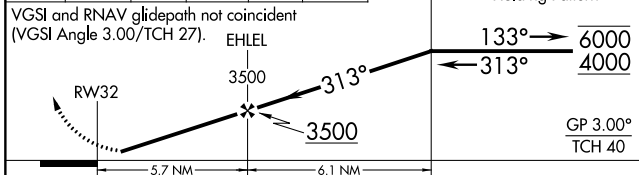
⚠ -35°C

MISSED APPROACH: Climb to 4000 direct MEKSE and on 223° track to JAKTI and on 132° track to CIDVA and hold.

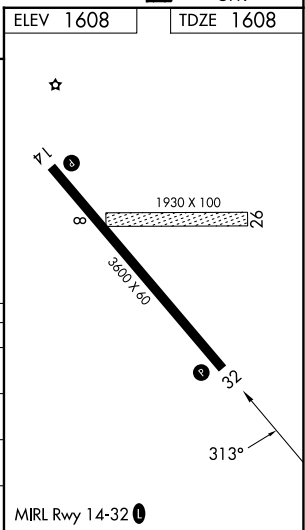
AWOS-3 118.225	MINNEAPOLIS CENTER 132.15 269.6	UNICOM 122.8 (CTAF) 0
--------------------------	---	---------------------------------



4000	MEKSE	tr 223°	JAKTI	tr 132°	CIDVA	HAVIR	4 NM Holding Pattern
------	-------	---------	-------	---------	-------	-------	----------------------



CATEGORY	A	B	C	D
LPV DA	1858-1	250 (300-1)		NA
LNAV/VNAV DA	2159-1½	551 (600-1½)		NA
LNAV MDA	2360-1 752 (800-1)	2360-1¼ 752 (800-1¼)	2360-2 752 (800-2)	NA
CIRCLING	2360-1 752 (800-1)	2360-1¼ 752 (800-1¼)	2360-2¼ 752 (800-2¼)	NA



NC-1, 22 FEB 2024 to 21 MAR 2024

NC-1, 22 FEB 2024 to 21 MAR 2024