

WAAS CH <b>45500</b> <b>W07A</b>	APP CRS <b>070°</b>	Rwy Idg TDZE Apt Elev	<b>9810</b> <b>30</b> <b>34</b>
--	------------------------	-----------------------------	---------------------------------------

# RNAV (GPS) RWY 7L

DAYTONA BEACH INTL (DAB)

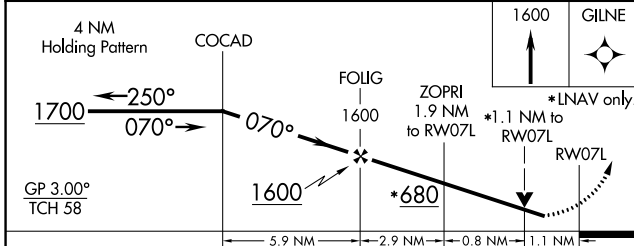
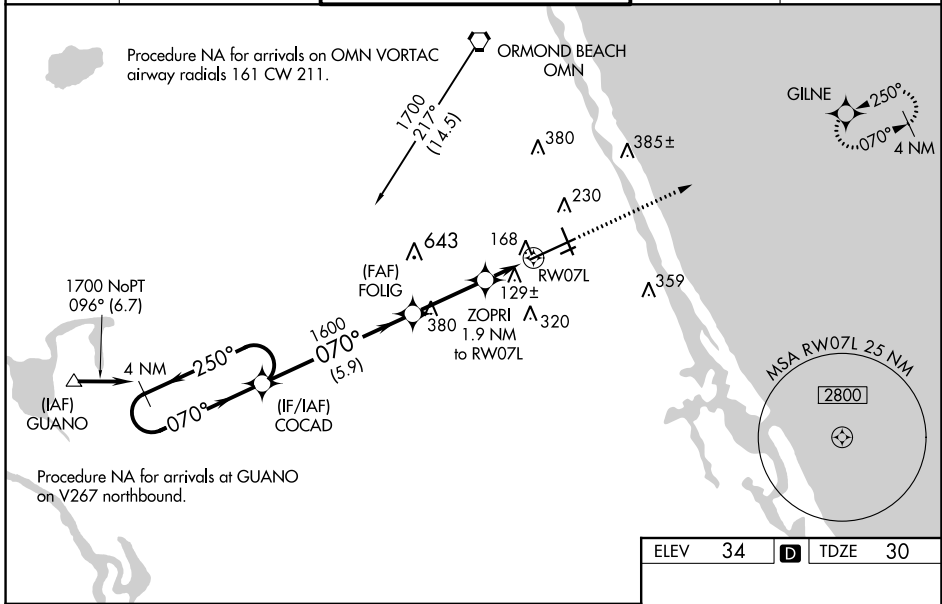
**▼**

Inoperative table does not apply to LPV all Cats. For uncompensated Baro-VNAV systems, LNAV/VNAV NA below -15°C (5°F) or above 43°C (109°F). DME/DME RNP-0.3 NA. Helicopter visibility reduction below 3/4 SM NA. For inoperative MALSR, increase LNAV/VNAV visibility all Cats to 1/4 and increase LNAV Cats A/B visibility to RVR 5000 and Cats C/D visibility to RVR 6000.

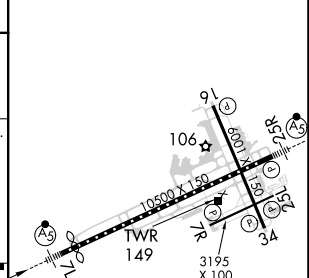
MALSR

MISSED APPROACH: Climb to 1600 direct GILNE and hold.

ATIS <b>132.875</b>	DAYTONA APP CON <b>125.8 269.075</b>	DAYTONA TOWER <b>120.7 257.8</b>	GND CON <b>121.9 348.6</b>	CLNC DEL <b>119.3</b>
------------------------	---	-------------------------------------	-------------------------------	--------------------------



ELEV 34	<b>D</b>	TDZE 30
---------	----------	---------



CATEGORY	A	B	C	D
LPV DA		230/40	200 (200-3/4)	
LNAV/VNAV DA		429/45	399 (400-7/8)	
LNAV MDA		420/40	390 (400-3/4)	
<b>C</b> CIRCLING	540-1	506 (600-1)	680-1 3/4 646 (700-1 3/4)	700-2 666 (700-2)

TDZ/CL Rwy 7L

HIRL Rwy 7L-25R

REIL Rwy 7R, 16, 25L, and 34

MIRL Rwy 7R-25L and 16-34

SE-3, 22 FEB 2024 to 21 MAR 2024

SE-3, 22 FEB 2024 to 21 MAR 2024