

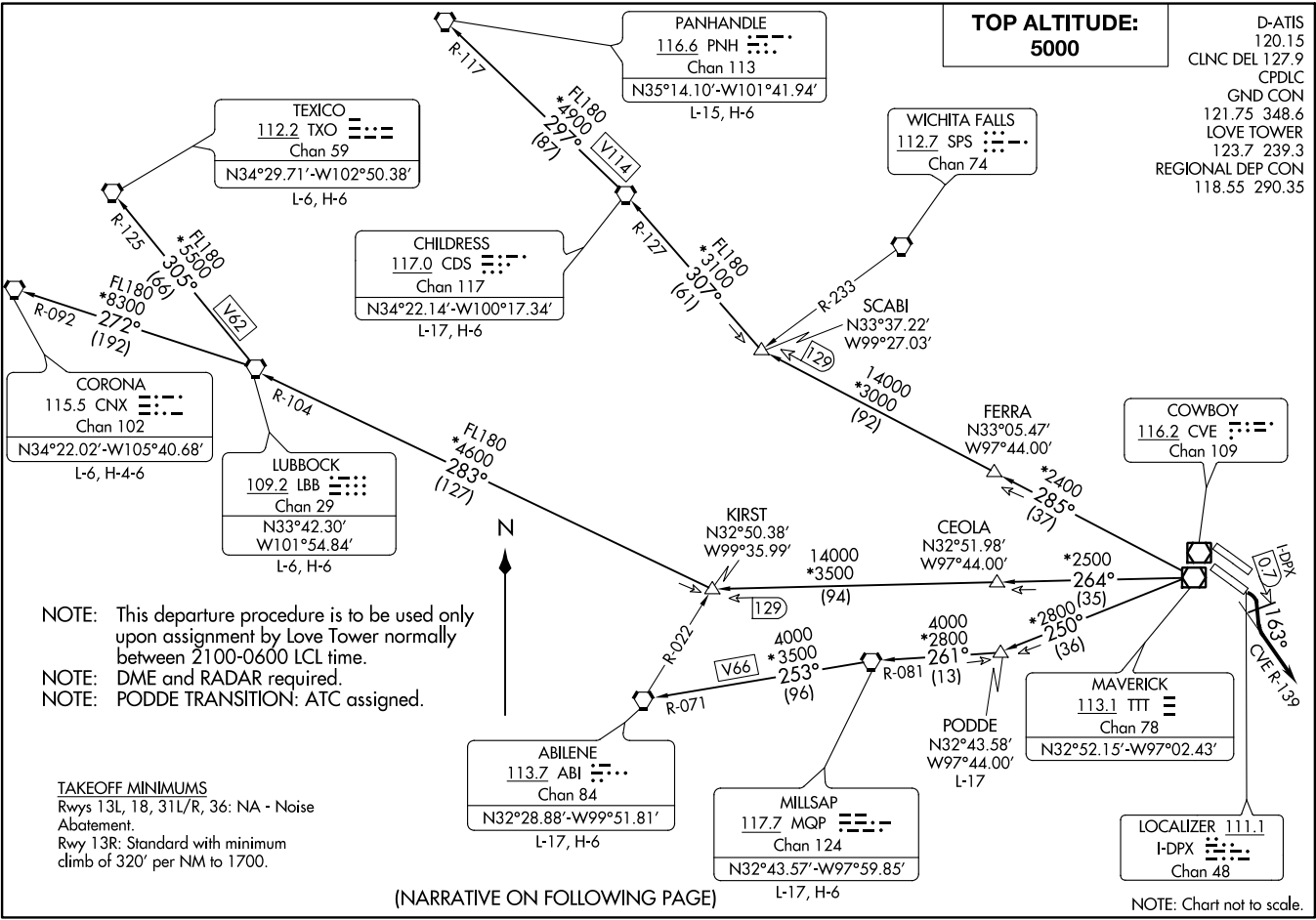
LOVE SIX DEPARTURE  
(LOVE6.TTT) 100CT19

DALLAS, TEXAS  
DALLAS LOVE FLD (DAL)

LOVE SIX DEPARTURE  
(LOVE6.TTT) 21112

AL-106 (FAA)

DALLAS LOVE FLD (DAL)  
DALLAS, TEXAS



**TOP ALTITUDE:  
5000**

D-ATIS  
120.15  
CLNC DEL 127.9  
CPDLC  
GND CON  
121.75 348.6  
LOVE TOWER  
123.7 239.3  
REGIONAL DEP CON  
118.55 290.35

TEXICO  
112.2 TXO  
Chan 59  
N34°29.71'-W102°50.38'  
L-6, H-6

CHILDRESS  
117.0 CDS  
Chan 117  
N34°22.14'-W100°17.34'  
L-17, H-6

PANHANDLE  
116.6 PNH  
Chan 113  
N35°14.10'-W101°41.94'  
L-15, H-6

WICHITA FALLS  
112.7 SPS  
Chan 74

SCABI  
N33°37.22'  
W99°27.03'

CORONA  
115.5 CNX  
Chan 102  
N34°22.02'-W105°40.68'  
L-6, H-4-6

LUBBOCK  
109.2 LBB  
Chan 29  
N33°42.30'  
W101°54.84'  
L-6, H-6

COWBOY  
116.2 CVE  
Chan 109

KIRST  
N32°50.38'  
W99°35.99'

CEOLA  
N32°51.98'  
W97°44.00'

FERRA  
N33°05.47'  
W97°44.00'

MAVERICK  
113.1 TTT  
Chan 78  
N32°52.15'-W97°02.43'

ABILENE  
113.7 ABI  
Chan 84  
N32°28.88'-W99°51.81'  
L-17, H-6

MILLSAP  
117.7 MQP  
Chan 124  
N32°43.57'-W97°59.85'  
L-17, H-6

PODDE  
N32°43.58'  
W97°44.00'  
L-17

LOCALIZER 111.1  
I-DPX  
Chan 48

NOTE: This departure procedure is to be used only upon assignment by Love Tower normally between 2100-0600 LCL time.  
NOTE: DME and RADAR required.  
NOTE: PODDE TRANSITION: ATC assigned.

**TAKEOFF MINIMUMS**  
Rwys 13L, 18, 31L/R, 36: NA - Noise Abatement.  
Rwy 13R: Standard with minimum climb of 320' per NM to 1700.

(NARRATIVE ON FOLLOWING PAGE)

NOTE: Chart not to scale.

# LOVE SIX DEPARTURE



## DEPARTURE ROUTE DESCRIPTION

TAKEOFF RUNWAY 13R: Turn right heading 163° not later than 0.7 DME outbound on the I-DPX localizer southeast course, to intercept and climb on the CVE R-139 for RADAR vectors to appropriate route. Unless otherwise advised maintain 5000 feet and expect filed altitude 10 minutes after departure.

ABILENE TRANSITION (LOVE6.ABI): From over TTT VOR/DME on TTT R-250 to PODDE, then on MQP R-081 to MQP VORTAC, then on MQP R-253 and ABI R-071 to ABI VORTAC.

CHILDRESS TRANSITION (LOVE6.CDS): From over TTT VOR/DME on TTT R-285 to SCABI, then on CDS R-127 to CDS VORTAC.

CORONA TRANSITION (LOVE6.CNX): From over TTT VOR/DME on TTT R-264 to KIRST, then on LBB R-104 to LBB VORTAC, then on LBB R-272 and CNX R-092 to CNX VORTAC.

LUBBOCK TRANSITION (LOVE6.LBB): From over TTT VOR/DME on TTT R-264 to KIRST, then on LBB R-104 to LBB VORTAC.

MILLSAP TRANSITION (LOVE6.MQP): From over TTT VOR/DME on TTT R-250 to PODDE, then on MQP R-081 to MQP VORTAC.

PANHANDLE TRANSITION (LOVE6.PNH): From over TTT VOR/DME on TTT R-285 to SCABI, then on CDS R-127 to CDS VORTAC, then on CDS R-297 and PNH R-117 to PNH VORTAC.

PODDE TRANSITION (LOVE6.PODDE): From over TTT VOR/DME on TTT R-250 to PODDE.

TEXICO TRANSITION (LOVE6.TXO): From over TTT VOR/DME on TTT R-264 to KIRST, then on LBB R-104 to LBB VORTAC, then on LBB R-305 and TXO R-125 to TXO VORTAC.

SC-2, 22 FEB 2024 to 21 MAR 2024

SC-2, 22 FEB 2024 to 21 MAR 2024