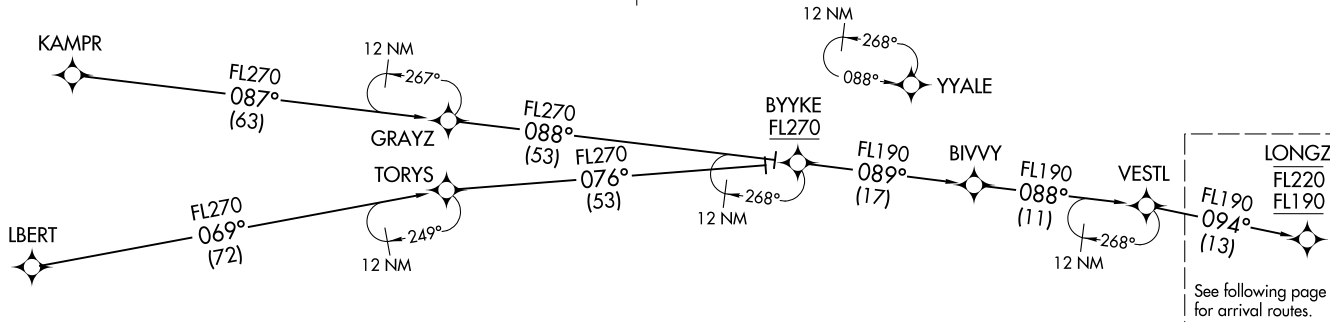


RNAV 1 - DME/DME/IRU or GPS  
 RADAR required for non-GPS equipped aircraft

DENVER APP CON  
 119.3 307.3  
 D-ATIS ARR  
 125.6 379.9  
 DENVER TOWER  
 128.75 273.55 (Rwy 7-25)  
 132.35 239.275 (Rwys 8-26, 17L-35R)  
 124.3 322.45 (Rwy 17R-35L)  
 135.3 351.95 (Rwys 16L-34R, 16R-34L)

N



- NOTE: Turbojet aircraft only.
- NOTE: Turbojet aircraft descend via MACH number until intercepting 280K. Maintain 280K until slowed by the STAR.
- NOTE: Denver Center will issue "descend via" clearance and landing direction.
- NOTE: BYYKE enroute transition: Do not file - to be assigned by ATC.
- NOTE: Expect runway assignment on initial contact with Denver TRACON.
- NOTE: Landing North select Rwy 34R Transition.
- NOTE: Landing South select Rwy 16R Transition.
- NOTE: Landing East select Rwy 7 Transition.
- NOTE: Landing West select Rwy 26 Transition.

BYYKE TRANSITION (BYYKE.LONGZ2)  
KAMPR TRANSITION (KAMPR.LONGZ2)  
LBERT TRANSITION (LBERT.LONGZ2)

(CONTINUED ON FOLLOWING PAGE)

NOTE: Chart not to scale.

LONGZ TWO ARRIVAL (RNAV) Transition Routes  
 (LONGZ.LONGZ2) 07OCT21

DENVER, COLORADO  
 DENVER INTL (DEN)

LONGZ.LONGZ2) 23110  
 AL-9077 (FAA)  
 LONGZ TWO ARRIVAL (RNAV) Transition Routes

DENVER INTL (DEN)  
 DENVER, COLORADO

LONGZ TWO ARRIVAL (RNAV) (LONGZ, LONGZ2) 070CTZ1

LONGZ TWO ARRIVAL (RNAV) Arrival Routes

DENVER, COLORADO DENVER INTL (DEN)

(LONGZ, LONGZ2) 23110

AL-9077 (FAA) Arrival Routes

DENVER INTL (DEN) DENVER, COLORADO

