

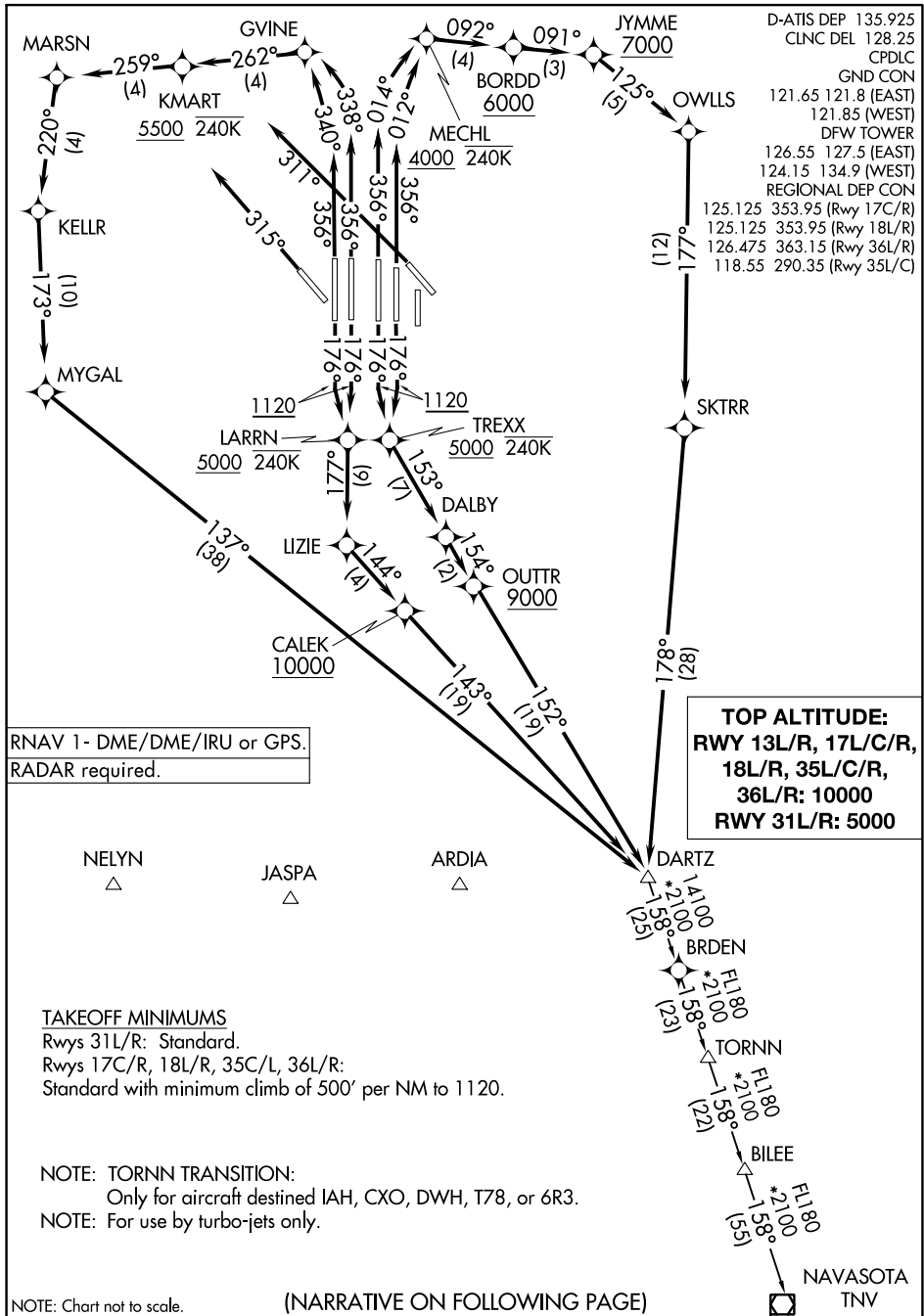
(DARTZ9.DARTZ) 23334

AL-6039 (FAA)

DALLAS-FORT WORTH INTL (DFW)

DARTZ NINE DEPARTURE (RNAV)

DALLAS-FORT WORTH, TEXAS



SC-2, 22 FEB 2024 to 21 MAR 2024

SC-2, 22 FEB 2024 to 21 MAR 2024

DARTZ NINE DEPARTURE (RNAV)

(DARTZ9.DARTZ) 03NOV22

DALLAS-FORT WORTH, TEXAS

DALLAS-FORT WORTH INTL (DFW)

DARTZ NINE DEPARTURE (RNAV)



DEPARTURE ROUTE DESCRIPTION

TAKEOFF RUNWAYS 17C/R: Climb on heading 176° to 1120, then direct TREXX, cross TREXX at or above 5000 and at or below 240K, then on track 153° to DALBY, then on track 154° to cross OUTTR at or above 9000, then on track 152° to DARTZ, thence. . .

TAKEOFF RUNWAYS 18L/R: Climb on heading 176° to 1120, then direct LARRN, cross LARRN at or above 5000 and at or below 240K, then on track 177° to LIZIE, then on track 144° to cross CALEK at or above 10000, then on track 143° to DARTZ, thence. . .

TAKEOFF RUNWAY 35C: Climb on heading 356° to intercept course 012° to cross MECHL at or above 4000 and at or below 240K, then on track 092° to cross BORDD at or above 6000, then on track 091° to cross JYMME at or above 7000, then on track 125° to OWLLS, then on track 177° to SKTRR, then track 178° to DARTZ, thence. . . .

TAKEOFF RUNWAY 35L: Climb on heading 356° to intercept course 014° to cross MECHL at or above 4000 and at or below 240K, then on track 092° to cross BORDD at or above 6000, then on track 091° to cross JYMME at or above 7000, then on track 125° to OWLLS, then on track 177° to SKTRR, then on track 178° to DARTZ, thence. . .

TAKEOFF RUNWAY 36L: Climb on heading 356° to intercept course 340° to GVINE, then on track 262° to cross KMART at or above 5500 and at or below 240K, then on track 259° to MARSN, then on track 220° to KELLR, then on track 173° to MYGAL, then on on track 137° to DARTZ, thence. . .

TAKEOFF RUNWAY 36R: Climb on heading 356° to intercept course 338° to GVINE, then on track 262° to cross KMART at or above 5500 and at or below 240K, then on track 259° to MARSN, then on track 220° to KELLR, then on track 173° to MYGAL, then on track 137° to DARTZ, thence. . .

TAKEOFF RUNWAY 31L: Climb on heading 315° or as assigned by ATC, for vectors to DARTZ, maintain 5000, expect filed altitude 10 minutes after departure.

TAKEOFF RUNWAY 31R: Climb on heading 311° or as assigned by ATC, for vectors to DARTZ, maintain 5000, expect filed altitude 10 minutes after departure.

. . . (transition) maintain 10000, expect filed altitude 10 minutes after departure.

NAVASOTA TRANSITION (DARTZ9.TNV):

TORNIN TRANSITION (DARTZ9.TORNN):

SC-2, 22 FEB 2024 to 21 MAR 2024

SC-2, 22 FEB 2024 to 21 MAR 2024