

APP CRS	Rwy Idg	N/A
254°	TDZE	N/A
	Apt Elev	1478

# RNAV (GPS)-B

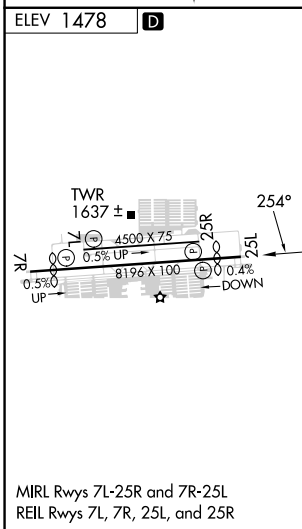
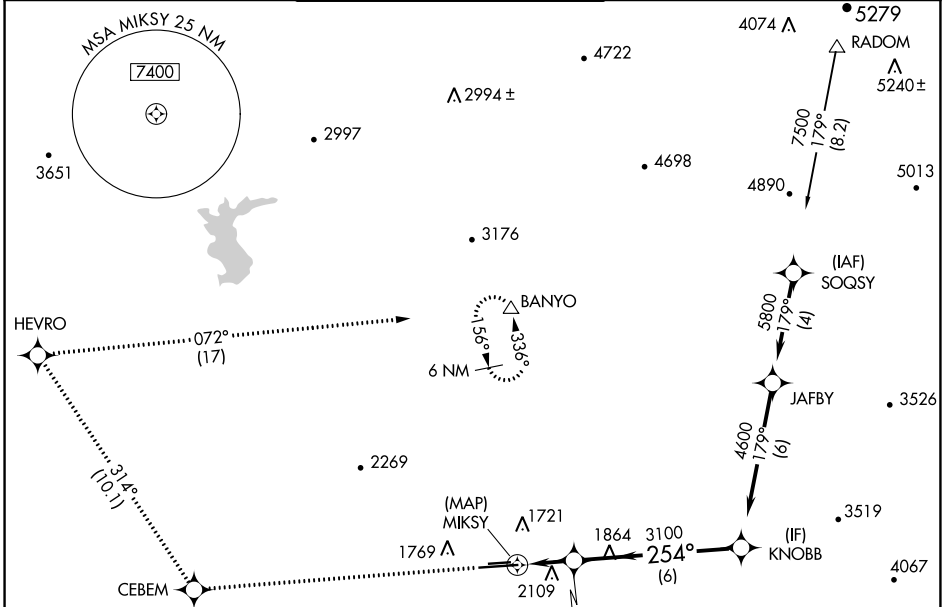
PHOENIX DEER VALLEY (DVT)

RNP APCH - GPS.

⚠ When VGSI inop, Circling to Rwy 25R NA at night. Circling not authorized at night north of Rwy 7R-25L. When local altimeter setting not received, use Scottsdale altimeter setting and increase all MDAs 40 feet and Circling Cat B visibility ½ SM.

MISSED APPROACH: Climb to 6000 direct CEBEM and on track 314° to HEVRO and right turn on track 072° to BANYO and hold.

ATIS	PHOENIX APP CON	DEER VALLEY TOWER ★	GND CON	CLNC DEL	UNICOM
126.5	120.7 239.0	118.4 (070°-250°) (CTAF) 120.2 (251°-069°)	121.8	123.9	122.95



ELEV 1478	<b>D</b>				
TWR 1637 ±	4500 X 75	25R	25L	25L	
0.5% UP	8196 X 100	0.4% DOWN			
6000	CEBEM	tr 314°	HEVRO	tr 072°	BANYO
					KNOBB
					4600
					Procedure Turn NA
CATEGORY	A	B	C	D	
CIRCLING	2400-1¼ 922 (1000-1¼)	2420-1¼ 942 (1000-1¼)	2580-3 1102 (1200-3)	NA	

SW-4, 22 FEB 2024 to 21 MAR 2024

SW-4, 22 FEB 2024 to 21 MAR 2024