

CLARKSVILLE, TENNESSEE

RNAV (GPS) X RWY 5

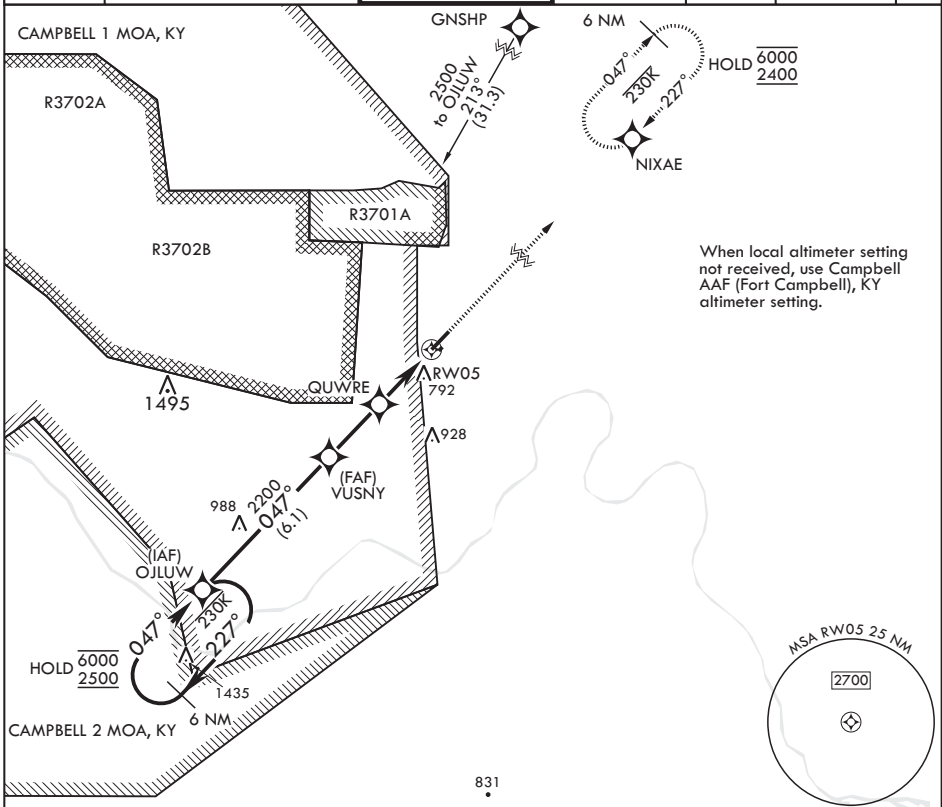
APCH CRS	Rwy Idg	5000
047°	TDZE	595
	Arprt Elev	595

AL-6373 (USA)

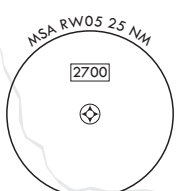
SABRE AAF (FORT CAMPBELL) (KEOD)

RNP APCH-GPS	MISSED APPROACH: Climb to 2400 direct NIXAE and hold.
RADAR required	
* Circling not authorized to Rwy 05R/23L.	

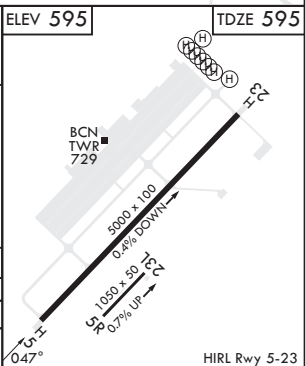
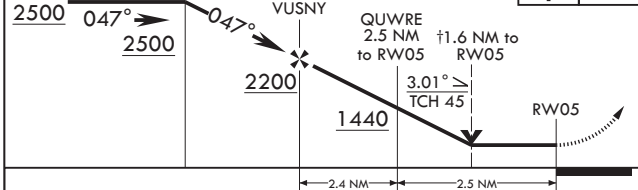
SABRE ATIS	CAMPBELL APP CON/DEP CON	TOWER *	GND CON	CLNC DEL	EAGLE RADIO	ASR
306.5	134.35 307.025	124.675 (CTAF) 290.45	142.975 267.3	237.6	285.7	



When local altimeter setting not received, use Campbell AAF (Fort Campbell), KY altimeter setting.



6 NM Holding Pattern OJLUW	† VDP NA when using Campbell AAF (Fort Campbell) altimeter setting.	2400	NIXAE	ELEV 595	TDZE 595
6000 ← 227°		↑	⊙		
2500 → 047°					



CATEGORY	A	B	C	D
LNAV MDA	1180-1 585 (600-1)	1180-1 585 (600-1)	1180-1 585 (600-1)	1180-1 585 (600-1)
CIRCLING*	1180-1 585 (600-1)	1240-1 645 (700-1)	1300-2 705 (800-2)	1300-2 705 (800-2)

CLARKSVILLE, TENNESSEE 36°34'N - 87°29'W SABRE AAF (FORT CAMPBELL) (KEOD)

Amdt 1 10AUG23

RNAV (GPS) X RWY 5

SE-1, 22 FEB 2024 to 21 MAR 2024

SE-1, 22 FEB 2024 to 21 MAR 2024

HIRL Rwy 5-23