

WAAS CH <b>50500</b> <b>W25A</b>	APP CRS <b>246°</b>	Rwy Idg TDZE <b>10</b> Apt Elev <b>11</b>	<b>4463</b>
--	------------------------	---	-------------

# RNAV (GPS) RWY 25

NEW SMYRNA BEACH MUNI (EVB)

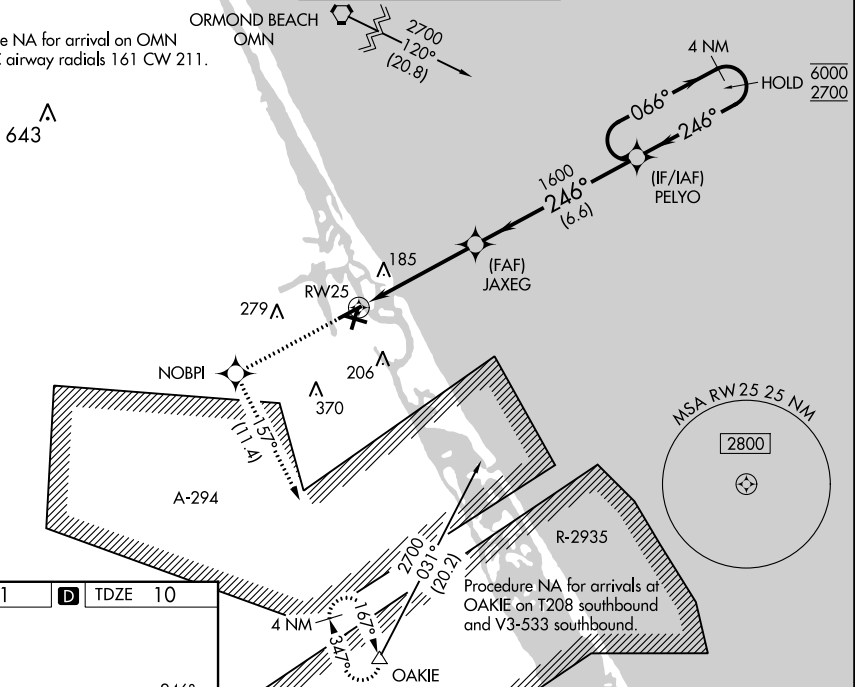
RNP APCH-GPS.

**▼** Rwy 25 helicopter visibility reduction below 1 SM NA. Straight-in Rwy 25 NA at night, Circling Rwy 7, 11, 25 NA at night. When local altimeter setting not received, use Daytona Beach altimeter setting increase LPV DA to 328 feet and all MDA 40 feet. Increase LNAV Cat C visibility ½ SM and Circling Cat C visibility ¼ SM.

MISSED APPROACH: Climb to 4000 direct NOBPI and on track 1.57° to OAKIE and hold, continue climb-in-hold to 4000.

ATIS <b>124.625</b>	DAYTONA APP CON <b>125.35 322.3</b>	<b>NEW SMYRNA TOWER BEACH*</b> <b>119.675 (CTAF) 0</b>	GND CON <b>121.325</b>	UNICOM <b>122.95</b>
------------------------	--	---	---------------------------	-------------------------

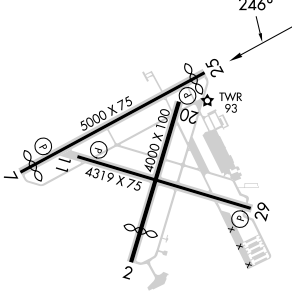
Procedure NA for arrival on OMN  
VORTAC airway radials 161 CW 211.



SE-3, 22 FEB 2024 to 21 MAR 2024

SE-3, 22 FEB 2024 to 21 MAR 2024

ELEV 11	<b>D</b>	TDZE 10
---------	----------	---------



4000	NOBPI	tr 157°	OAKIE	VGSI and RNAV glidepath not coincident (VGSI Angle 3.00/TCH 46).	4 NM
				PELYO	Holding Pattern
			JAXEG 1600		066° → 6000 ← 246° 2700
			RWY 25		GP 3.00° TCH 60
					4.7 NM      6.6 NM

CATEGORY	A	B	C	D
LPV DA	303-1 293 (300-1)			NA
LNAV MDA	440-1	430 (500-1)	440-1¼ 430 (500-1¼)	NA
<b>C</b> CIRCLING	440-1 429 (500-1)	520-1 509 (600-1)	680-1¾ 669 (700-1¾)	NA

REIL Rws 7 and 25  
MIRL Rws 7-25 and 11-29 **0**  
NEW SMYRNA BEACH, FLORIDA  
Orig-C 26JAN23

29°03'N-80°57'W

NEW SMYRNA BEACH MUNI (EVB)  
**RNAV (GPS) RWY 25**