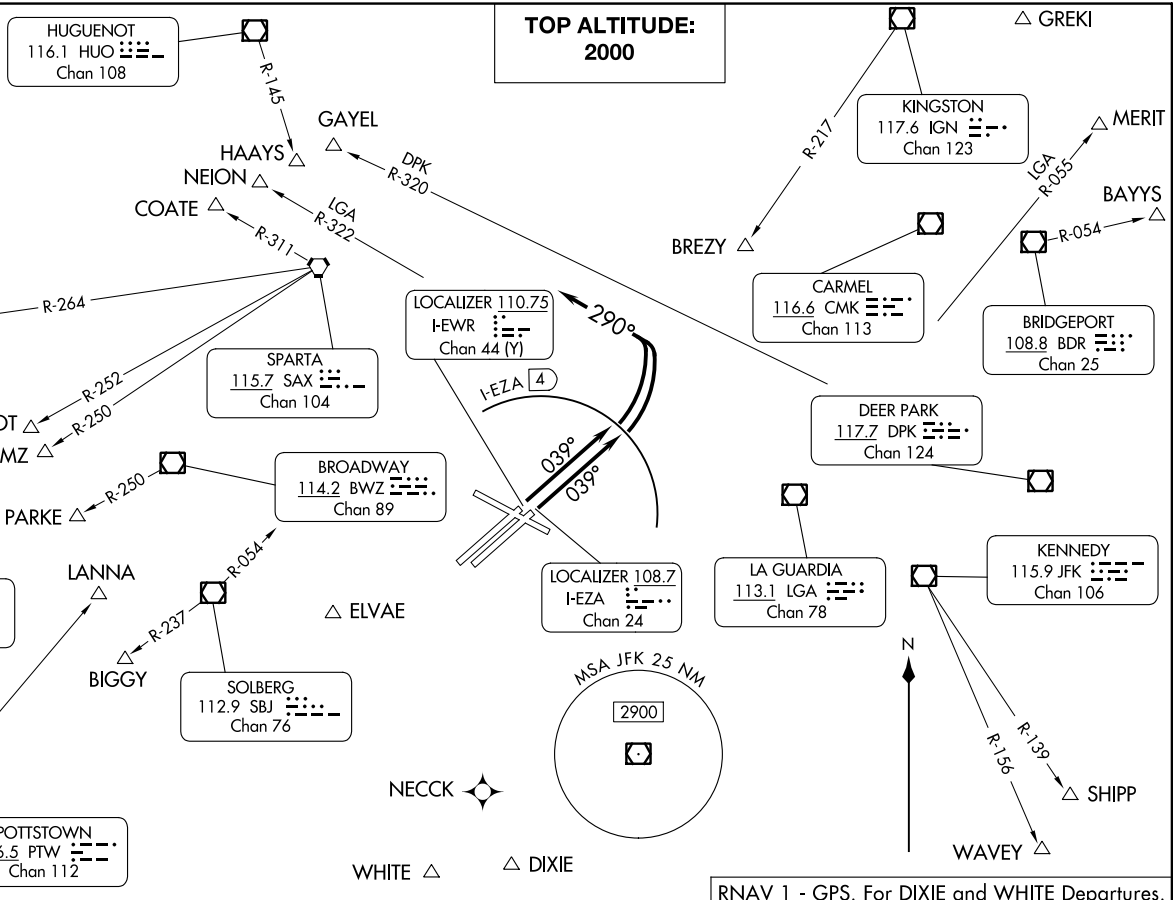


DEVIL ONE DEPARTURE
(DEV11.EWR) 30NOV23
NEWARK, NEW JERSEY
NEWARK LIBERTY INTL (EWR)

NEW YORK DEP CON
119.2 379.9
D-ATIS
134.825
CLNC DEL 118.85
CPDLC
GND CON 121.8
NEWARK TOWER
118.3 257.6



TOP ALTITUDE:
2000

RNAV 1 - GPS. For DIXIE and WHITE Departures.
RADAR and DME required.

(NARRATIVE ON FOLLOWING PAGE)

(DEV11.EWR) 23334
DEVIL ONE DEPARTURE
A1-285 (FAA)
NEWARK LIBERTY INTL (EWR)
NEWARK, NEW JERSEY

DEVIL ONE DEPARTURE

AL-285 (FAA)

NEWARK, NEW JERSEY



DEPARTURE ROUTE DESCRIPTION

TAKEOFF RUNWAY 4L/R: Climb on heading 039° until I-EZA 4 DME (use I-EWR 3.6 DME when I-EZA is NA), then climbing left to turn heading 290°, maintain 2000, thence....

....as per notes or for RADAR vectors to assigned route/fix. Expect clearance to filed altitude/flight level ten (10) minutes after departure. Thence....

LOST COMMUNICATIONS: For aircraft proceeding to COATE, NEION, HAAYS, GAYEL, or BREZY, if radio contact lost/not established with ATC, climb to 3000 after SBJ R-054.

NOTE: Rwy 4L/R, simultaneous reception of EWR ILS/DME required.

Depart Rwy 4L/R

Expect RADAR VECTORS to:

DP FIX	BDR/BDR R-054
BAYYS	SBJ /SBJ R-237
BIGGY	IGN R-217 to BREZY
BREZY	SAX/SAX R-311
COATE	ELVAE/NECCK
DIXIE	SAX R-252
ELIOT	DPK R-320
GAYEL	HUO
HAAYS	PTW R-059
LANNA	LGA R-055
MERIT	LGA R-322
NEION	SAX/SAX R-264
NEWEL	BWZ R-250
PARKE	JFK/JFK R-139
SHIPP	JFK/JFK R-156
WAVEY	ELVAE/NECCK
WHITE	SAX R-250
ZIMMZ	

NOTE: ELIOT may be accessed by all types of aircraft requesting a final altitude of 14000 or 16000.

NOTE: NEWEL may be accessed by turbo jet aircraft only requesting a final altitude at or above FL180.

NOTE: ZIMMZ may be accessed by all types of aircraft requesting a final altitude at or above FL180.

TAKEOFF MINIMUMS:

Rwy 4L: Standard with minimum climb of 365'/NM to 800.

Rwy 4R: Standard with minimum climb of 345'/NM to 800.

NE-2, 22 FEB 2024 to 21 MAR 2024

NE-2, 22 FEB 2024 to 21 MAR 2024