

NANDR TWO DEPARTURE (RNAV)

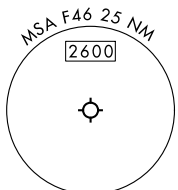
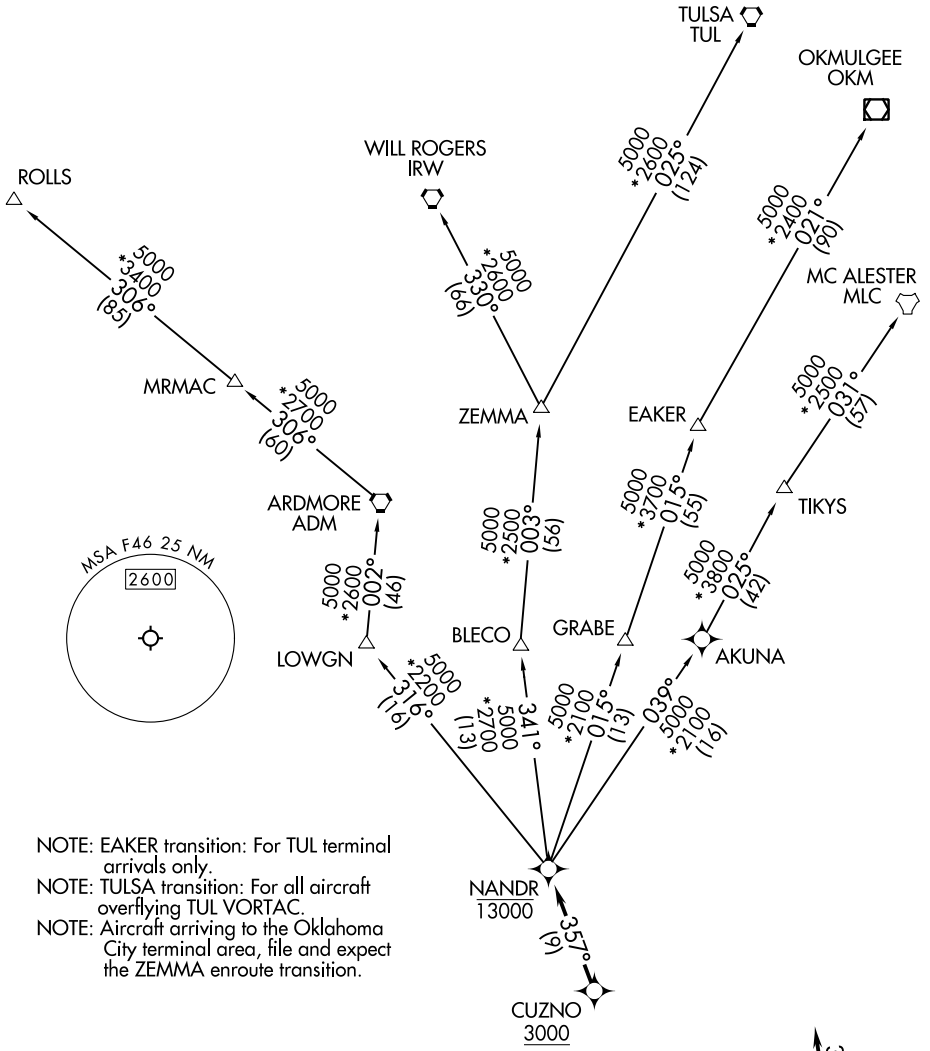
ROCKWALL, TEXAS

REGIONAL DEP CON
124.3 282.275

RNAV 1 - DME/DME/IRU or GPS.

RADAR required.

**TOP ALTITUDE:
ASSIGNED BY ATC**



NOTE: EAKER transition: For TUL terminal arrivals only.
 NOTE: TULSA transition: For all aircraft overflying TUL VORTAC.
 NOTE: Aircraft arriving to the Oklahoma City terminal area, file and expect the ZEMMA enroute transition.

TAKEOFF MINIMUMS
 Rwy 15, 33: Standard.



NOTE: Chart not to scale.

(NARRATIVE ON FOLLOWING PAGE)

SC-2, 22 FEB 2024 to 21 MAR 2024

SC-2, 22 FEB 2024 to 21 MAR 2024

NANDR TWO DEPARTURE (RNAV)



DEPARTURE ROUTE DESCRIPTION

TAKEOFF RUNWAY 17: Climb on heading 167° or as assigned by ATC, thence...

TAKEOFF RUNWAY 35: Climb on heading 347° or as assigned by ATC, thence...

. . . . expect RADAR vectors to cross CUZNO at or above 3000, then on track 357° to cross NANDR at or below 13000, then on assigned transition.

EAKER TRANSITION (NANDR2.EAKER)

MC ALESTER TRANSITION (NANDR2.MLC)

OKMULGEE TRANSITION (NANDR2.OKM)

ROLLS TRANSITION (NANDR2.ROLLS)

TULSA TRANSITION (NANDR2.TUL)

WILL ROGERS TRANSITION (NANDR2.IRW)

ZEMMA TRANSITION (NANDR2.ZEMMA)

SC-2, 22 FEB 2024 to 21 MAR 2024

SC-2, 22 FEB 2024 to 21 MAR 2024