

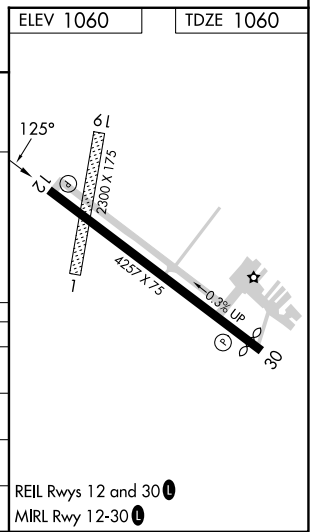
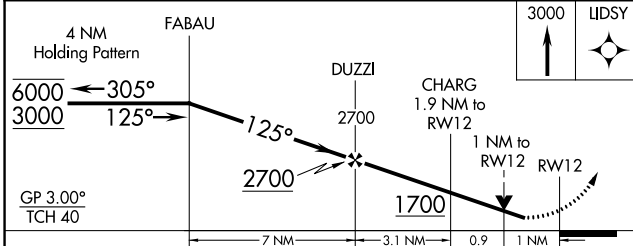
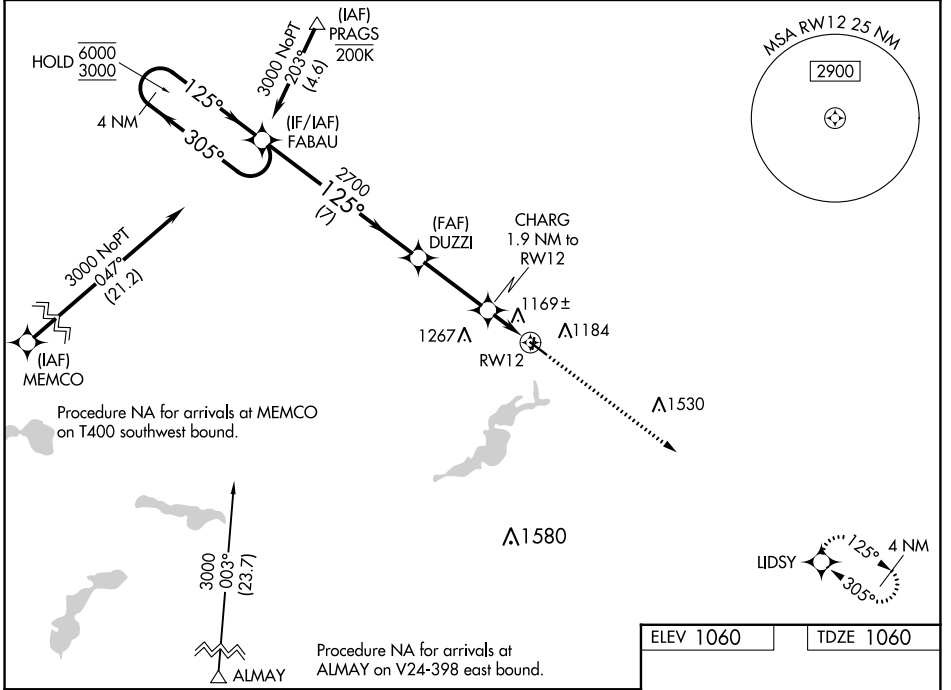
WAAS CH <b>81932</b> <b>W12A</b>	APP CRS <b>125°</b>	Rwy Idg TDZE Apt Elev	<b>4257</b> <b>1060</b> <b>1060</b>
--	------------------------	-----------------------------	---

# RNAV (GPS) RWY 12

FARIBAULT MUNI-LIZ WALL STROHFUS FLD (F'BL)

RNP APCH - GPS.	<p><b>⚠</b> Circling NA to Rwys 1 and 19. Rwy 12 helicopter visibility reduction below 3/4 SM NA. For uncompensated Baro-VNAV systems, LNAV/VNAV NA below -17°C or above 54°C.</p>	<p>MISSED APPROACH: Climb to 3000 direct LIDSY and hold.</p>
-----------------	--	--

AWOS-3 <b>120.2</b>	MINNEAPOLIS APP CON <b>134.7 284.7</b>	GCO <b>121.725</b>	UNICOM <b>122.8 (CTAF) 0</b>
------------------------	---	-----------------------	---------------------------------



CATEGORY	A	B	C	D
LPV DA		1310-1 250 (300-1)		NA
LNAV/VNAV DA		1339-1 279 (300-1)		NA
LNAV MDA		1420-1 360 (400-1)		NA
CIRCLING	1520-1 460 (500-1)		1740-2 680 (700-2)	NA

NC-1, 22 FEB 2024 to 21 MAR 2024

NC-1, 22 FEB 2024 to 21 MAR 2024