

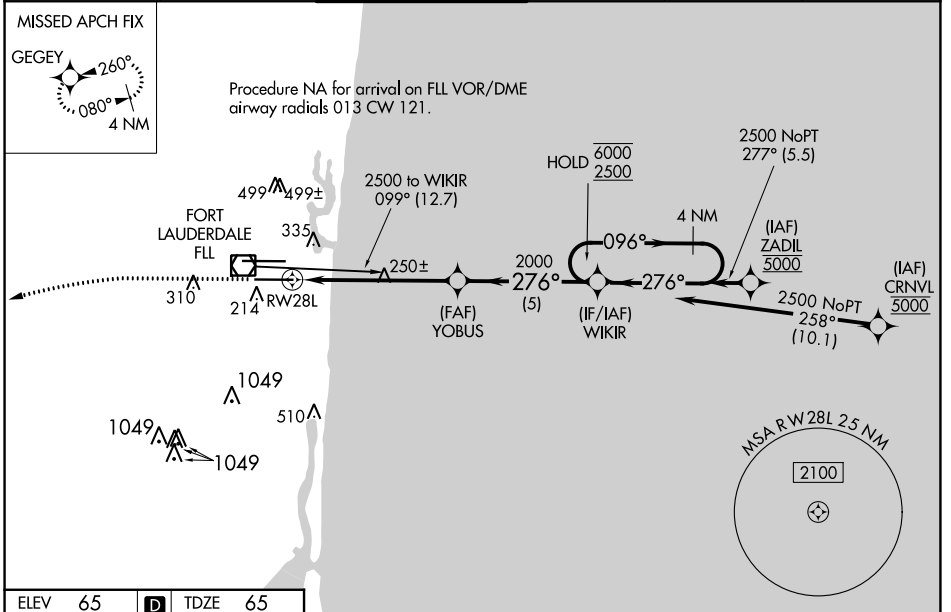
WAAS CH 58336 W28B	APP CRS 276°	Rwy Idg TDZE Apt Elev	8000 65 65
--	------------------------	-----------------------------	---------------------------------------

RNAV (GPS) RWY 28L

FORT LAUDERDALE/HOLLYWOOD INTL (FLL)

RNP APCH-GPS.	<p>MALSF</p>	<p>MISSED APPROACH: Climb to 1000 then climbing left turn to 3000 direct GEGEY and hold.</p>
<p>Inop table does not apply to LPV. For uncompensated Baro-VNAV systems, LNAV/VNAV NA below 7°C or above 54°C. Simultaneous approach authorized. LNAV procedure NA during simultaneous operations. Use of FD or AP required during simultaneous operations.</p>		

D-ATIS 135.0	MIAMI APP CON 133.775 285.6	FORT LAUDERDALE TOWER 119.3 257.8	GND CON 121.4	CLNC DEL 128.4	CPDLC
------------------------	---------------------------------------	---	-------------------------	--------------------------	-------

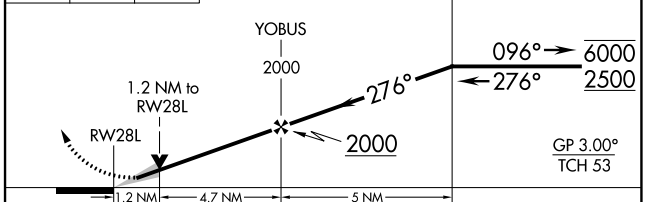
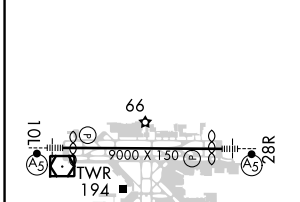


SE-3, 22 FEB 2024 to 21 MAR 2024

SE-3, 22 FEB 2024 to 21 MAR 2024

ELEV 65	D	TDZE 65
---------	----------	---------

1000	3000	GEGEY	<p>VGSI and RNAV glidepath not coincident (VGSI Angle 3.00/TCH 69).</p>



	CATEGORY	A	B	C	D
LPV DA			265/40	200 (200-¾)	
LNAV/VNAV DA			459/45	394 (400-⅞)	
LNAV MDA		500/40	435 (500-¾)	500/50	435 (500-1)
C CIRCLING		680-1	615 (700-1)	800-2 735 (800-2)	800-2¼ 735 (800-2¼)