

VORTAC FST 116.9 Chan 116	APP CRS 116°	Rwy Idg TDZE Apt Elev 7508 3002 3011
---	------------------------	--

VOR RWY 12

FORT STOCKTON-PECOS COUNTY (FST)

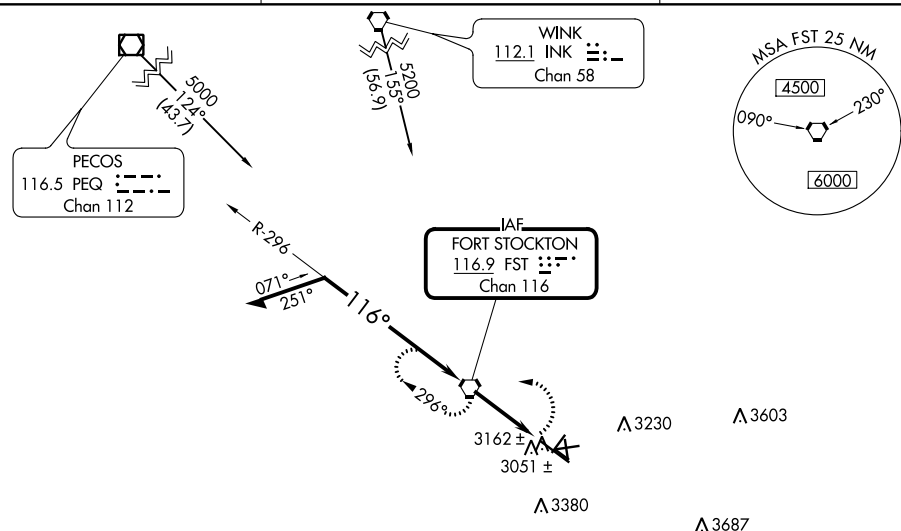
- ⚠** Circling NA to Rwys 7-25, 11-29 and 16-34.
- ⚠** Circling Rwy 3, 21, 30 NA at night.

MISSED APPROACH: Climbing left turn to 5000 direct FST VORTAC and hold.

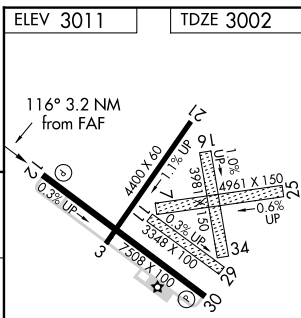
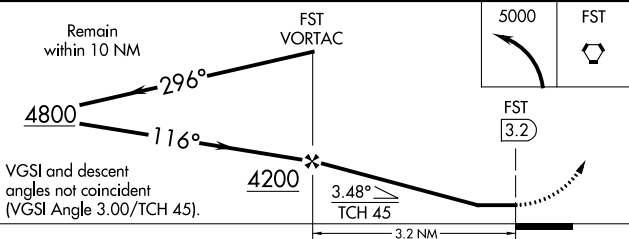
ASOS
118.525

ALBUQUERQUE CENTER
135.875 292.15

UNICOM
122.8 (CTAF) **0**



△ 4064



CATEGORY	A	B	C	D
S-12	3500-1	498 (500-1)	3500-1¼ 498 (500-1¼)	3500-1½ 498 (500-1½)
CIRCLING	3540-1 529 (600-1)	3660-1 649 (700-1)	3740-2 729 (800-2)	3760-2½ 749 (800-2½)

MIRL Rwys 3-21 and 12-30 **0**

FAF to MAP 3.2 NM

Knots	60	90	120	150	180
Min:Sec	3:12	2:08	1:36	1:17	1:04

SC-3, 22 FEB 2024 to 21 MAR 2024

SC-3, 22 FEB 2024 to 21 MAR 2024