

**BORRN SIX DEPARTURE (RNAV)**  
(BORRN6.BORRN) 30NOV23

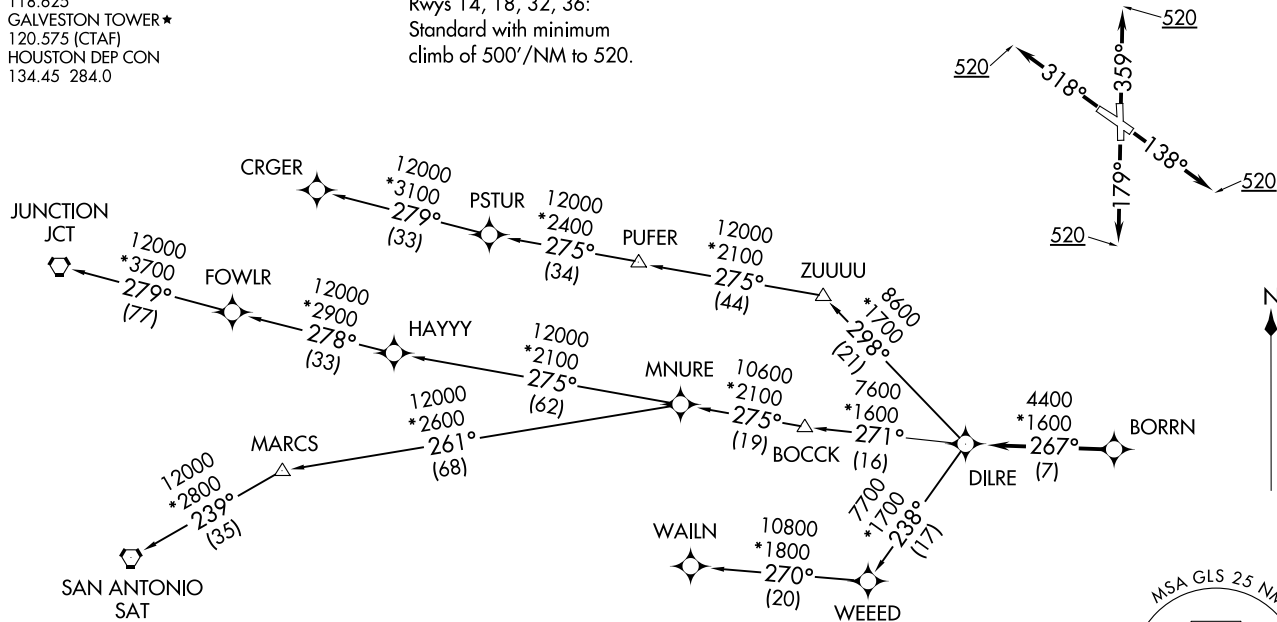
SCHOLES INTL AT GALVESTON (GLS)  
GALVESTON, TEXAS

ASOS  
123.95  
CLNIC DEL (When twr closed)  
135.35  
GND CON  
118.625  
GALVESTON TOWER★  
120.575 (CTAF)  
HOUSTON DEP CON  
134.45 284.0

TAKEOFF MINIMUMS  
Rwys 14, 18, 32, 36:  
Standard with minimum  
climb of 500'/NM to 520.

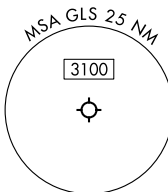
RNAV 1 - DME/DME/IRU or GPS.  
RADAR required.

**TOP ALTITUDE:  
ASSIGNED BY ATC**



NOTE: CRGER-TRANSITION ATC assigned only for aircraft departing 54T, AXH, EFD, GLS, HPY, IWS, LBX, LVJ, SGR, TME, TØØ, T41.

(NARRATIVE ON FOLLOWING PAGE)



NOTE: Chart not to scale.

**BORRN SIX DEPARTURE (RNAV)**  
(BORRN6.BORRN) 23334

SCHOLES INTL AT GALVESTON (GLS)  
GALVESTON, TEXAS  
AL-164 (FAA)

# BORRN SIX DEPARTURE (RNAV)



## DEPARTURE ROUTE DESCRIPTION

TAKEOFF RUNWAY 14: Climb on heading 138° to 520, for RADAR vectors to BORRN, thence. . . .

TAKEOFF RUNWAY 18: Climb on heading 179° to 520, for RADAR vectors to BORRN, thence. . . .

TAKEOFF RUNWAY 32: Climb on heading 318° to 520, for RADAR vectors to BORRN, thence. . . .

TAKEOFF RUNWAY 36: Climb on heading 359° to 520, for RADAR vectors to BORRN, thence. . . .

. . . .on track 267° to DILRE, then on (transition). Maintain ATC assigned altitude. Expect filed altitude 10 minutes after departure.

CRGER TRANSITION (BORRN6.CRGER)

JUNCTION TRANSITION (BORRN6.JCT)

MNURE TRANSITION (BORRN6.MNURE)

SAN ANTONIO TRANSITION (BORRN6.SAT)

WAILN TRANSITION (BORRN6.WAILN)

SC-5, 22 FEB 2024 to 21 MAR 2024

SC-5, 22 FEB 2024 to 21 MAR 2024