

WAAS CH <b>66023</b> <b>W04A</b>	APP CRS <b>040°</b>	Rwy Idg TDZE Apt Elev	<b>4501</b> <b>1944</b> <b>1961</b>
--	------------------------	-----------------------------	---

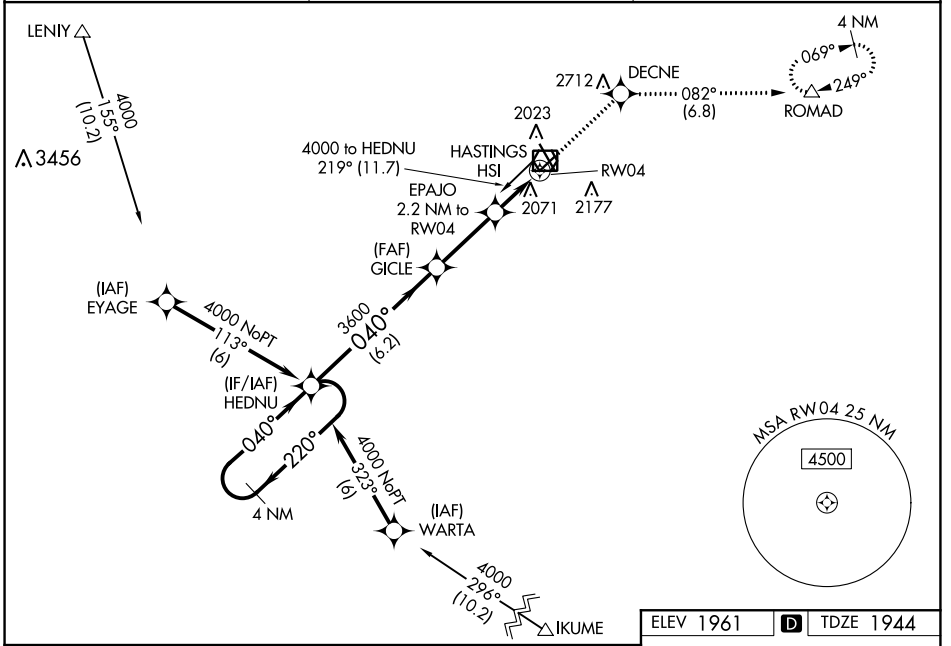
# RNAV (GPS) RWY 4

HASTINGS MUNI (HSI)

**⚠** For uncompensated Baro-VNAV systems, LNAV/VNAV NA below -18°C (0°F) or above 54°C (130°F). DME/DME RNP-0.3 NA. When local altimeter setting not received, use Grand Island altimeter setting and increase all DAs/MDAs 80 feet, and visibility Circling Cat C ¼ SM. Baro-VNAV and VDP NA when using Grand Island altimeter setting.

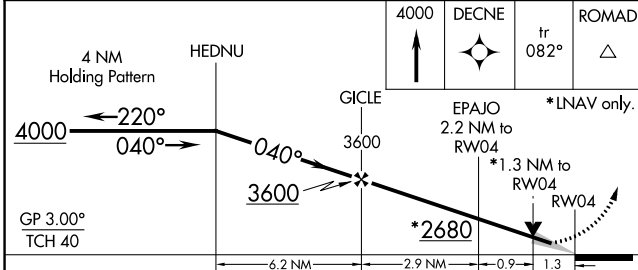
MISSED APPROACH: Climb to 4000 direct DECNE and on track 082° to ROMAD and hold.

ASOS <b>120.525</b>	MINNEAPOLIS CENTER <b>119.4 278.8</b>	UNICOM <b>122.8 (CTAF)</b>
------------------------	--	-------------------------------



NC-2, 22 FEB 2024 to 21 MAR 2024

NC-2, 22 FEB 2024 to 21 MAR 2024



ELEV 1961	TDZE 1944
-----------	-----------

CATEGORY	A	B	C	D
LPV DA	2194-1	250 (300-1)		NA
LNAV/VNAV DA	2267-1½	323 (400-1½)		NA
LNAV MDA	2380-1	436 (500-1)	2380-1½ 436 (500-1½)	NA
<b>C</b> CIRCLING	2380-1 419 (500-1)	2540-1 579 (600-1)	2540-1½ 579 (600-1½)	NA

