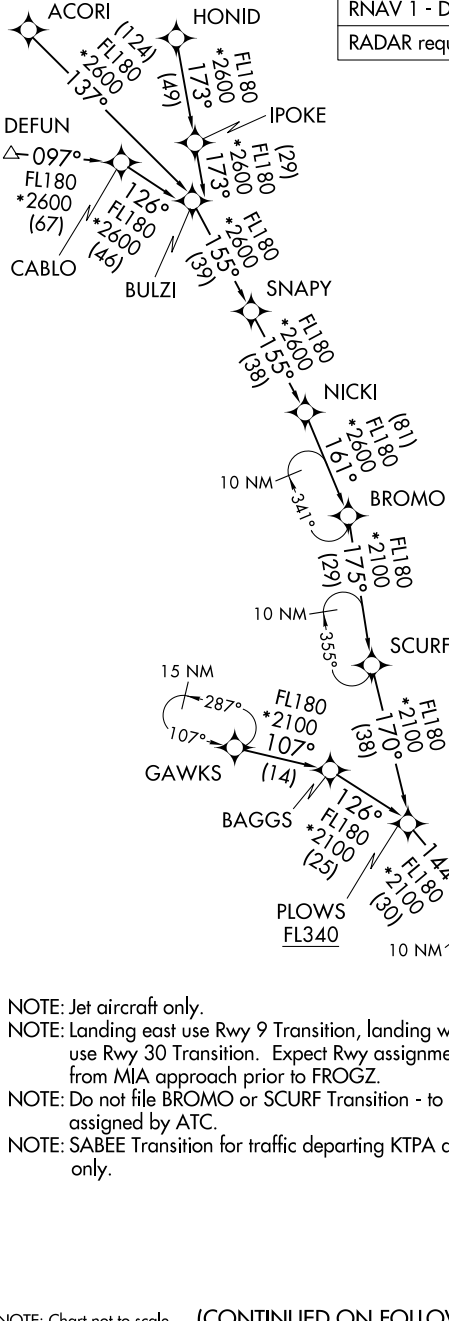


FROGZ FOUR ARRIVAL (RNAV) Transition Routes

MIAMI, FLORIDA

RNAV 1 - DME/DME/IRU or GPS.  
RADAR required.

MIAMI APP CON  
120.5 350.225  
KHST ATIS\*  
132.275 269.9  
MIA D-ATIS  
119.15  
TMB ATIS  
124.0  
X51 AWOS-3  
118.375



- ACORI TRANSITION (ACORI.FROGZ4)
- BROMO TRANSITION (BROMO.FROGZ4)
- DEFUN TRANSITION (DEFUN.FROGZ4)
- GAWKS TRANSITION (GAWKS.FROGZ4)
- HONID TRANSITION (HONID.FROGZ4)
- MARCI TRANSITION (MARCI.FROGZ4)
- SABEE TRANSITION (SABEE.FROGZ4)
- SCURF TRANSITION (SCURF.FROGZ4)

SE-3, 22 FEB 2024 to 21 MAR 2024

SE-3, 22 FEB 2024 to 21 MAR 2024

- NOTE: Jet aircraft only.
- NOTE: Landing east use Rwy 9 Transition, landing west use Rwy 30 Transition. Expect Rwy assignment from MIA approach prior to FROGZ.
- NOTE: Do not file BROMO or SCURF Transition - to be assigned by ATC.
- NOTE: SABEE Transition for traffic departing KTPA area only.

NOTE: Chart not to scale. (CONTINUED ON FOLLOWING PAGE)

See following page for arrival routes.

FROGZ FOUR ARRIVAL (RNAV) Transition Routes  
(FROGZ.FROGZ4) 15JUN23

MIAMI, FLORIDA

RNAV 1 - DME/DME/IRU or GPS.

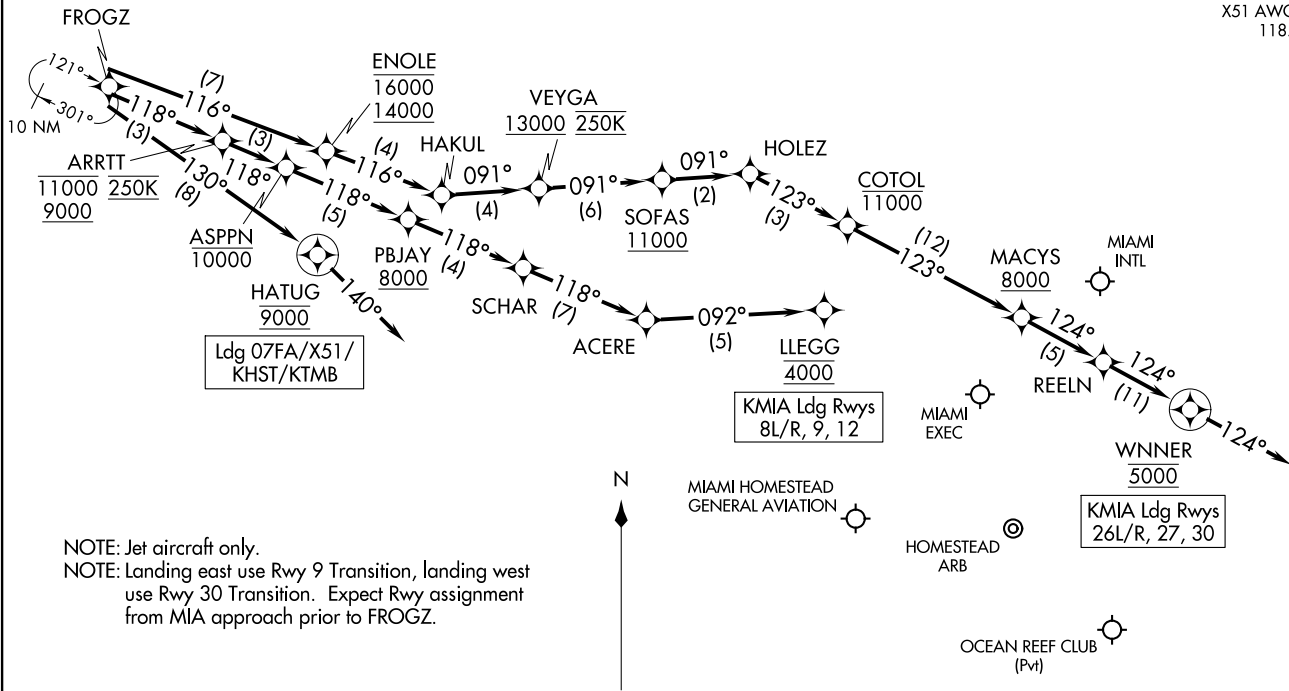
RADAR required.

MIAMI APP CON  
 120.5 350.225  
 KHST ATIS \*  
 132.275 269.9  
 MIA D-ATIS  
 119.15  
 TMB ATIS  
 124.0  
 X51 AWOS-3  
 118.375

FROGZ FOUR ARRIVAL (RNAV)  
(FROGZ, FROGZ4) 15JUN23

Arrival Routes

MIAMI, FLORIDA



NOTE: Jet aircraft only.  
 NOTE: Landing east use Rwy 9 Transition, landing west use Rwy 30 Transition. Expect Rwy assignment from MIA approach prior to FROGZ.

NOTE: Chart not to scale.

(NARRATIVE ON FOLLOWING PAGE)

FROGZ FOUR ARRIVAL (RNAV)  
(FROGZ, FROGZ4) 23222

AL-257 (FAA)  
Arrival Routes

MIAMI, FLORIDA