

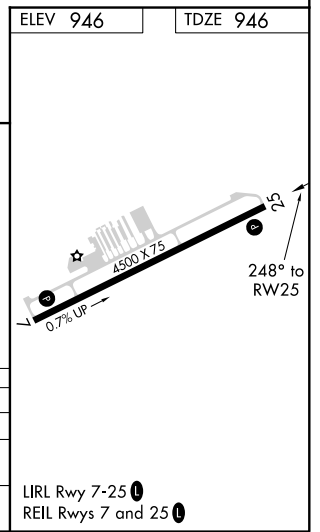
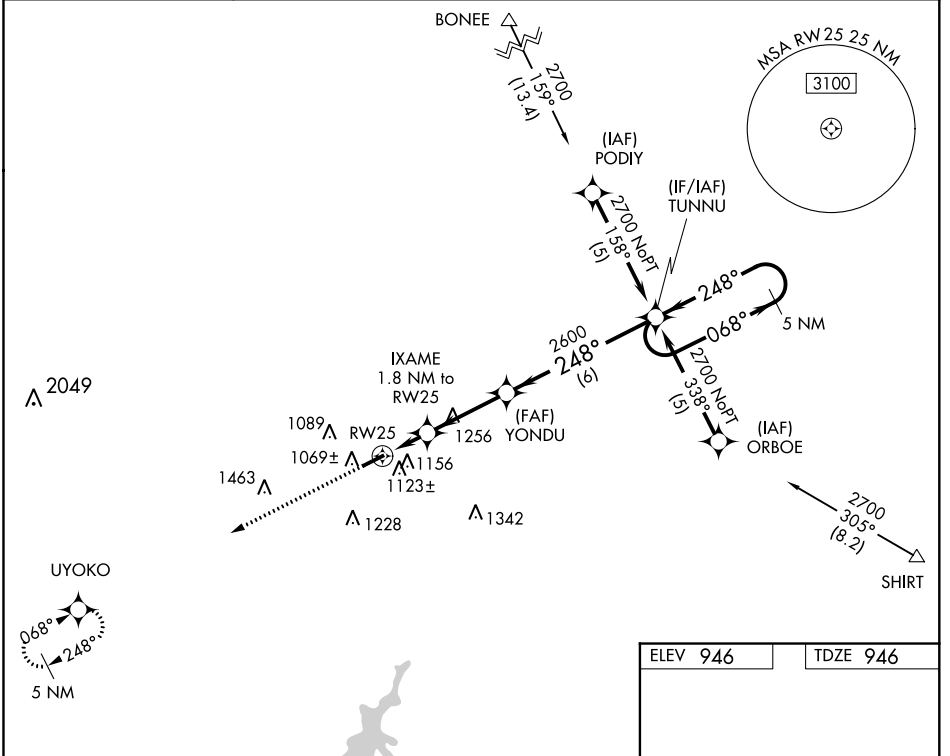
WAAS CH <b>56602</b> <b>W25A</b>	APP CRS <b>248°</b>	Rwy Idg <b>4500</b> TDZE <b>946</b> Apt Elev <b>946</b>
--	------------------------	---

# RNAV (GPS) RWY 25

GREENE COUNTY-LEWIS A JACKSON RGNL (I19)

<p><b>▽</b> DME/DME RNP-0.3 NA. If local altimeter setting not received, use Dayton-Wright Brothers altimeter setting and increase all DAs/MDAs 40 feet. VDP NA when using Dayton-Wright Brothers altimeter setting.</p> <p><b>▲</b> NA</p>	<p>MISSED APPROACH: Climb to 2700 direct UYOKO and hold.</p>
---	--

AWOS-3 <b>118.525</b>	COLUMBUS APP CON <b>118.85 269.275</b>	UNICOM <b>122.7 (CTAF)</b>
--------------------------	---	-------------------------------



2700	UYOKO	VGSI and RNAV glidepath not coincident (VGSI Angle 4.00/TCH 36).	5 NM Holding Pattern
	YONDU		
	TUNNU		
	IXAME 1.8 NM to RW25		
	*1.1 NM to RW25		
	*1560		
	*LNAV only.		
			GP 3.00° TCH 40
	1.1	0.7	3.2 NM
			6 NM
CATEGORY	A	B	C
LPV DA	1196-1	250 (300-1)	NA
LNAV MDA	1440-1	494 (500-1)	1440-1 1/4 494 (500-1 1/4)
CIRCLING	1460-1	514 (600-1)	1460-1 1/2 514 (600-1 1/2)

EC-2, 21 JUN 2018 to 19 JUL 2018

EC-2, 21 JUN 2018 to 19 JUL 2018

WAAS CH <b>97702</b> <b>W07A</b>	APP CRS <b>068°</b>	Rwy Idg <b>4500</b> TDZE <b>936</b> Apt Elev <b>946</b>
--	------------------------	---

# RNAV (GPS) RWY 7

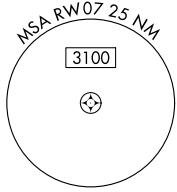
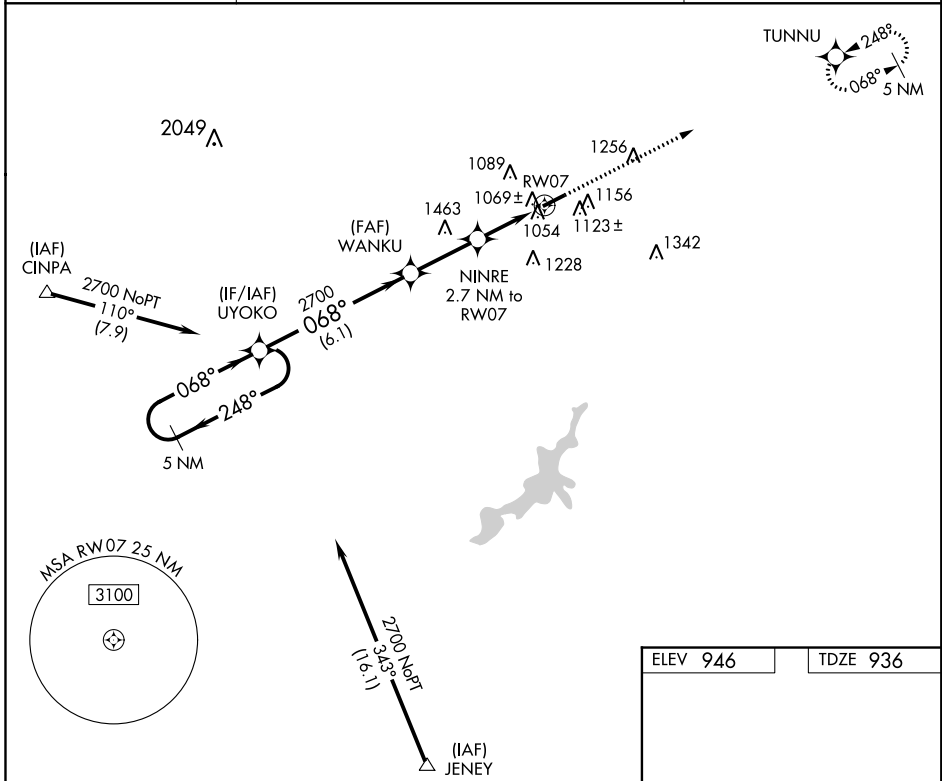
GREENE COUNTY-LEWIS A JACKSON RGNL (I19)

**▽** DME/DME RNP-0.3 NA. If local altimeter setting not received, use Dayton-Wright Brothers altimeter setting and increase all DAs/MDAs 40 feet. Visibility reduction by helicopters NA.

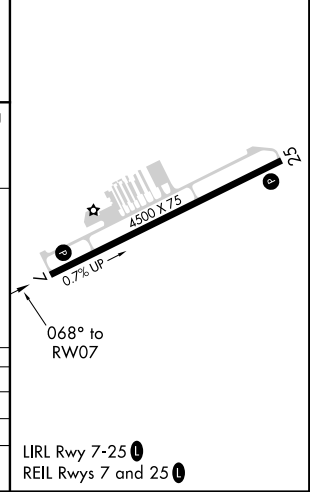
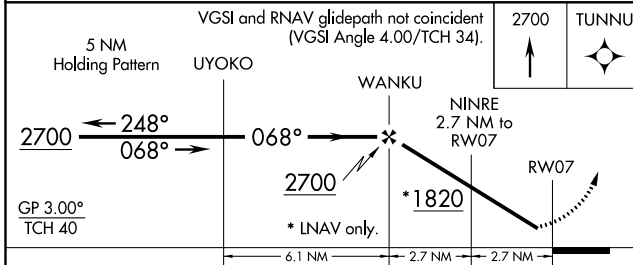
**▲** NA

MISSED APPROACH: Climb to 2700 direct TUNNU and hold.

AWOS-3 <b>118.525</b>	COLUMBUS APP CON <b>118.85 269.275</b>	UNICOM <b>122.7 (CTAF) 0</b>
--------------------------	---	---------------------------------



ELEV 946	TDZE 936
----------	----------



CATEGORY	A	B	C	D
LPV DA	1236-1¼	300 (300-1¼)		NA
LNAV MDA	1320-1	384 (400-1)		NA
CIRCLING	1460-1	514 (600-1)	1460-1½ 514 (600-1½)	NA

LIRL Rwy 7-25 0  
REIL Rwy 7 and 25 0

# RNAV (GPS) RWY 7

EC-2, 21 JUN 2018 to 19 JUL 2018

EC-2, 21 JUN 2018 to 19 JUL 2018

VOR/DME SGH <b>113.2</b> Chan <b>79</b>	APP CRS <b>221°</b>	Rwy Idg TDZE Apt Elev	<b>4500</b> <b>946</b> <b>949</b>
---	------------------------	-----------------------------	---

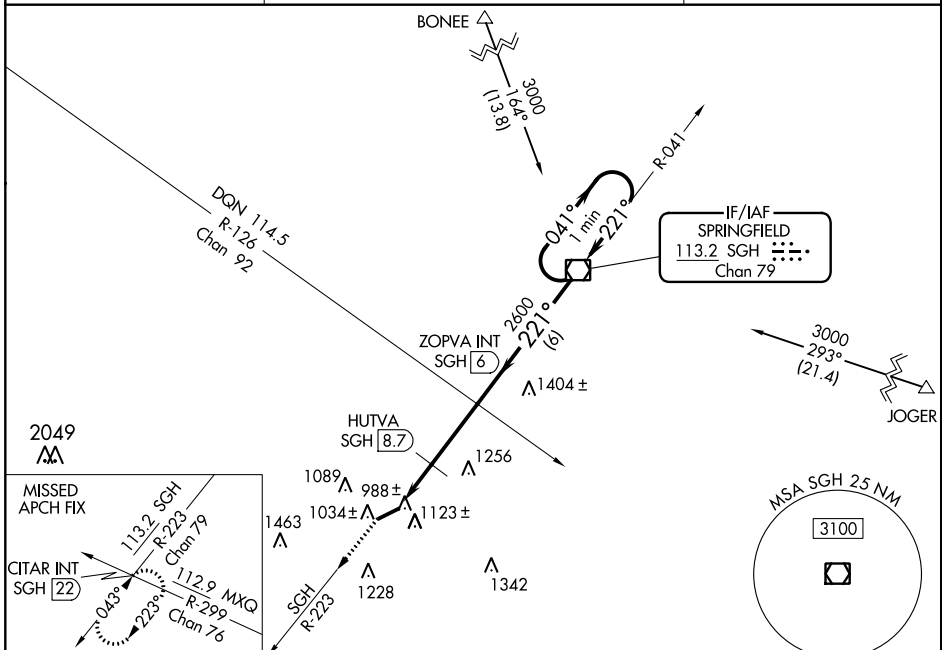
# VOR RWY 25

GREENE COUNTY-LEWIS A JACKSON RGNL (I19)

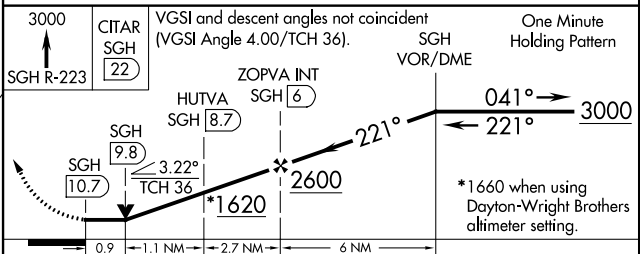
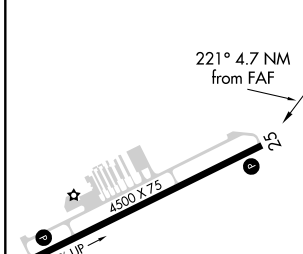
When local altimeter setting not received, use Dayton-Wright Brothers altimeter setting and increase all MDA 40 feet. Increase S-25 Cat C visibility 1/8 mile and HUTVA fix minimums S-25 Cat C visibility 1/8 mile. VDP NA when using Dayton-Wright Brothers altimeter setting.

MISSED APPROACH: Climb to 3000 on SGH VOR/DME R-223 to CITAR INT/22 DME and hold.

AWOS-3 <b>118.525</b>	COLUMBUS APP CON <b>118.85 269.275</b>	UNICOM <b>122.7 (CTAF) 0</b>
--------------------------	---	---------------------------------



ELEV <b>949</b>	TDZE <b>946</b>
-----------------	-----------------



CATEGORY	A		B		C		D	
	S-25	1620-1	674 (700-1)	1620-1 7/8	674 (700-1 7/8)	1620-2	671 (700-2)	NA
CIRCLING	1620-1	671 (700-1)	1620-2	671 (700-2)	NA	NA	NA	NA
HUTVA FIX MINIMUMS (DME REQUIRED)								
S-25	1380-1	434 (500-1)	1380-1 1/4	434 (500-1 1/4)	NA	NA	NA	NA
CIRCLING	1440-1	491 (500-1)	1440-1 1/2	491 (500-1 1/2)	NA	NA	NA	NA

FAF to MAP 4.7 NM					
Knots	60	90	120	150	180
Min:Sec	4:42	3:08	2:21	1:53	1:34

DAYTON, OHIO  
Orig-A 21AUG14

GREENE COUNTY-LEWIS A JACKSON RGNL (I19)  
39°41'N-84°00'W

# VOR RWY 25

EC-2, 21 JUN 2018 to 19 JUL 2018

EC-2, 21 JUN 2018 to 19 JUL 2018

VOR/DME SGH <b>113.2</b> Chan <b>79</b>	APP CRS <b>043°</b>	Rwy Idg <b>4500</b> TDZE <b>936</b> Apt Elev <b>949</b>
---	------------------------	---

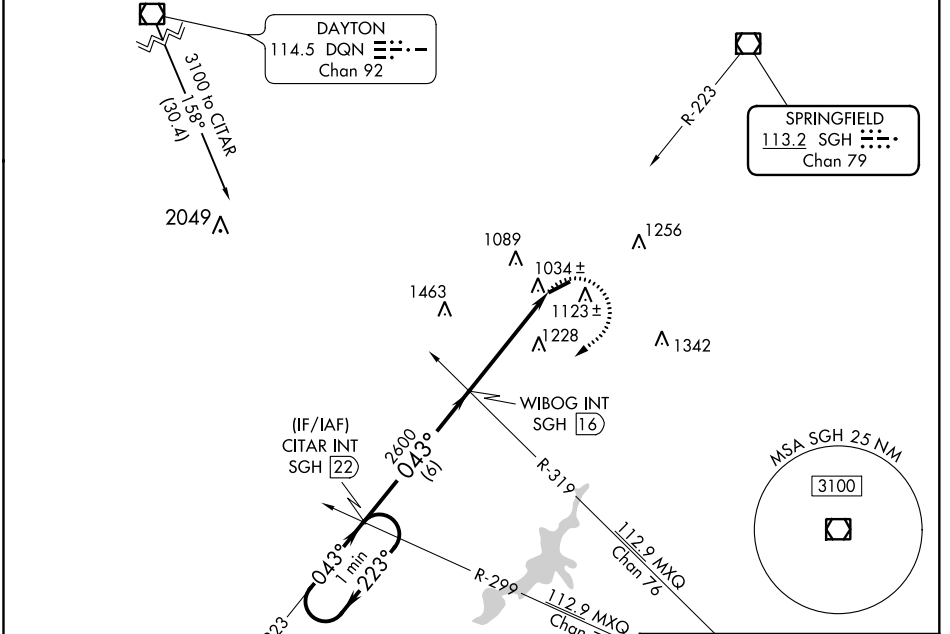
# VOR RWY 7

GREENE COUNTY-LEWIS A JACKSON RGNL (I19)

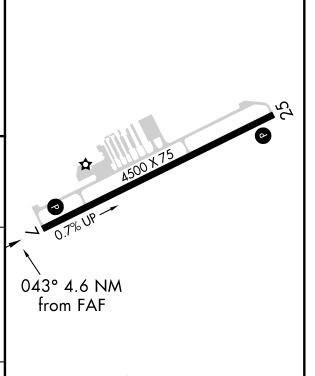
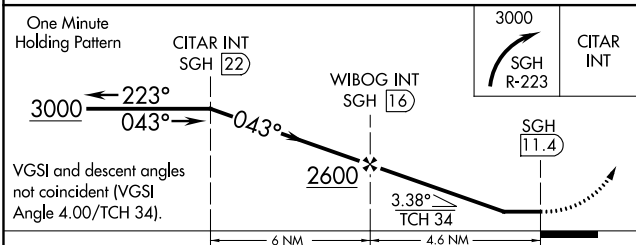
**NA** When local altimeter setting not received, use Dayton-Wright Brothers altimeter setting and increase all MDA 40 feet, increase S-7 and Circling Cat C visibility 1/8 mile. Visibility reduction by helicopters NA.

MISSED APPROACH: Climbing right turn to 3000 on SGH VOR/DME R-223 to CITAR Int/SGH 22 DME and hold.

AWOS-3 <b>118.525</b>	COLUMBUS APP CON <b>118.85 269.275</b>	UNICOM <b>122.7 (CTAF) 0</b>
--------------------------	---	---------------------------------



ELEV 949	TDZE 936
----------	----------



CATEGORY	A	B	C	D
S-7	1540-1	604 (600-1)	1540-1 3/4 604 (600-1 3/4)	NA
CIRCLING	1540-1	591 (600-1)	1540-1 3/4 591 (600-1 3/4)	NA

LIRL Rwy 7-25 (0)  
REIL Rwys 7 and 25 (0)

FAF to MAP 4.6 NM

Knots	60	90	120	150	180
Min:Sec	4:36	3:04	2:18	1:50	1:32

EC-2, 21 JUN 2018 to 19 JUL 2018

EC-2, 21 JUN 2018 to 19 JUL 2018