

APP CRS **190°**  
 Rwy Idg **6376**  
 TDZE **1182**  
 Apt Elev **1182**

# RNAV (GPS) RWY 19

FORD (IMT)

RNP APCH-GPS.

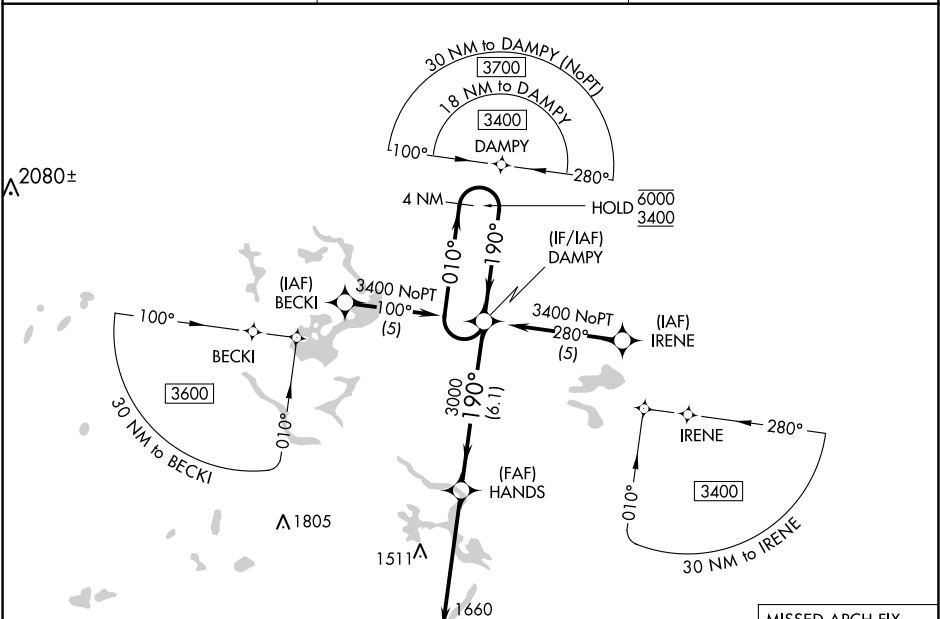
**MISSED APPROACH:**  
 Climb to 3400 direct  
 SEYOC and hold.

- ▼ Circling NA northeast of Rwy 19 and 31. Rwy 19 helicopter visibility reduction below 1 SM NA.
- ▲ Straight-in Rwy 19 NA at night, Circling Rwy 13, 19, 31 NA at night.

ASOS  
**119.025**

MINNEAPOLIS CENTER  
**121.25 322.5**

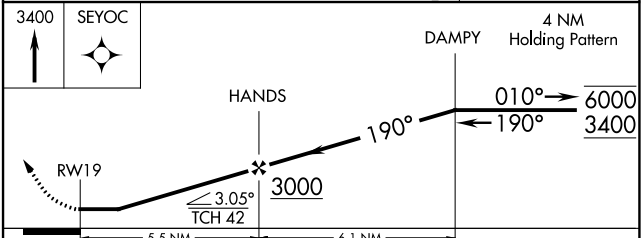
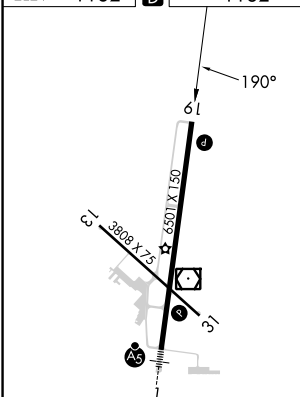
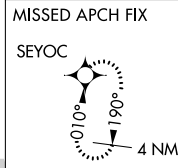
UNICOM  
**122.8 (CTAF) 0**



EC-1, 22 FEB 2024 to 21 MAR 2024

EC-1, 22 FEB 2024 to 21 MAR 2024

ELEV **1182** **D** TDZE **1182**



CATEGORY	A	B	C	D
LNAV MDA	1760-1	578 (600-1)	1760-1½	578 (600-1½)
<b>C</b> CIRCLING	1760-1 578 (600-1)	1780-1 598 (600-1)	1780-1½ 598 (600-1½)	1840-2 658 (700-2)

MIRL Rwy 13-31 **0**  
 HIRL Rwy 1-19 **0**  
 REL Rwy 19 and 31 **0**