

LOC I-CZH 110.5	APP CRS 137°	Rwy ldg 7701
		TDZE 27
		Apt Elev 30

ILS Y or LOC Y RWY 14

JACKSONVILLE INTL (JAX)

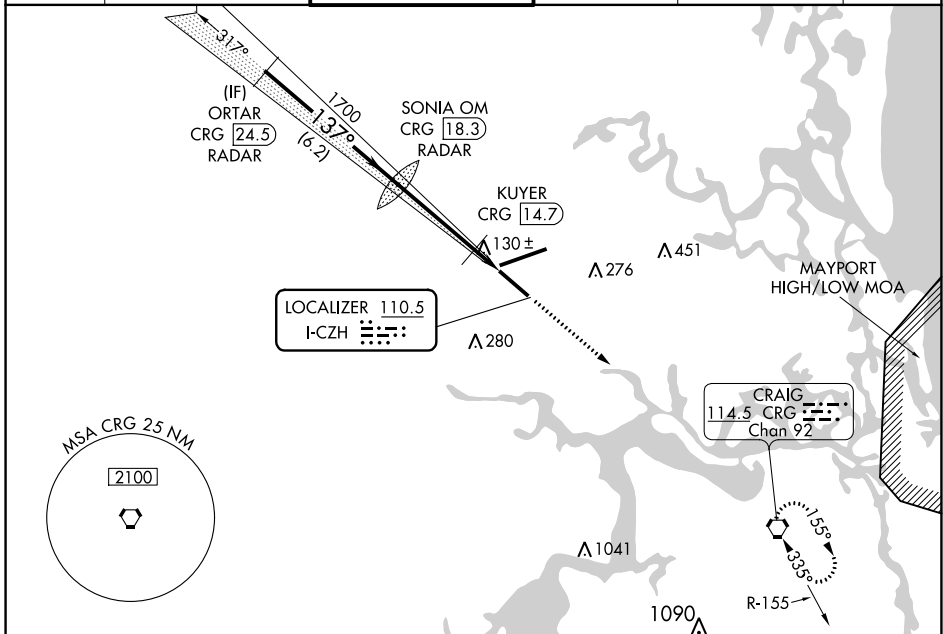
RADAR required for procedure entry. DME or RADAR required.

Autopilot coupled approach NA below 750 feet MSL. Rwy 14 helicopter visibility reduction below $\frac{3}{4}$ SM NA. For inop ALS, increase S-LOC Cats A/B visibility to 1 SM. KUYER Fix minimums: For inop ALS, increase S-LOC 14 all Cats visibility to 1 SM.



MISSED APPROACH:
Climb to 3000 direct
CRG VORTAC and hold.

D-ATIS 125.85	JACKSONVILLE APP CON 119.0 269.9	JACKSONVILLE TOWER 118.3 317.7	GND CON 121.9 348.6	CLNC DEL 119.5 290.275	CPDLC
-------------------------	--	--	-------------------------------	----------------------------------	-------



SE-3, 22 FEB 2024 to 21 MAR 2024

SE-3, 22 FEB 2024 to 21 MAR 2024

VGS1 and ILS glidepath not coincident (VGS1 Angle 3.00/TCH 70).				3000	CRG	ELEV 30	TDZE 27
				↑	⬠		
GS 3.00° TCH 54	ORTAR CRG [24.5] RADAR	SONIA OM CRG [18.3] RADAR	KUYER CRG [14.7]	CRG [13.5]			
CATEGORY	A	B	C	D			
S-ILS 14	227- $\frac{1}{2}$ 200 (200- $\frac{1}{2}$)						
S-LOC 14	480- $\frac{3}{4}$ 453 (500- $\frac{3}{4}$)		480- $\frac{7}{8}$ 453 (500- $\frac{7}{8}$)				
CIRCLING <input checked="" type="checkbox"/>	520-1 490 (500-1)		580-1 $\frac{1}{2}$ 550 (600-1 $\frac{1}{2}$)		640-2 610 (700-2)		
KUYER FIX MINIMUMS (DME REQUIRED)							
S-LOC 14	380- $\frac{3}{4}$ 353 (400- $\frac{3}{4}$)						
CIRCLING <input checked="" type="checkbox"/>	520-1 490 (500-1)		580-1 $\frac{1}{2}$ 550 (600-1 $\frac{1}{2}$)		640-2 610 (700-2)		
				REIL Rwy 32			
				TDZ/CL Rwys 8, 14, and 26			
				HIRL Rwys 8-26 and 14-32			
				FAF to MAP 4.8 NM			
				Knots 60 90 120 150 180			
				Min:Sec 4:48 3:12 2:24 1:55 1:36			